

Annual Report 2022



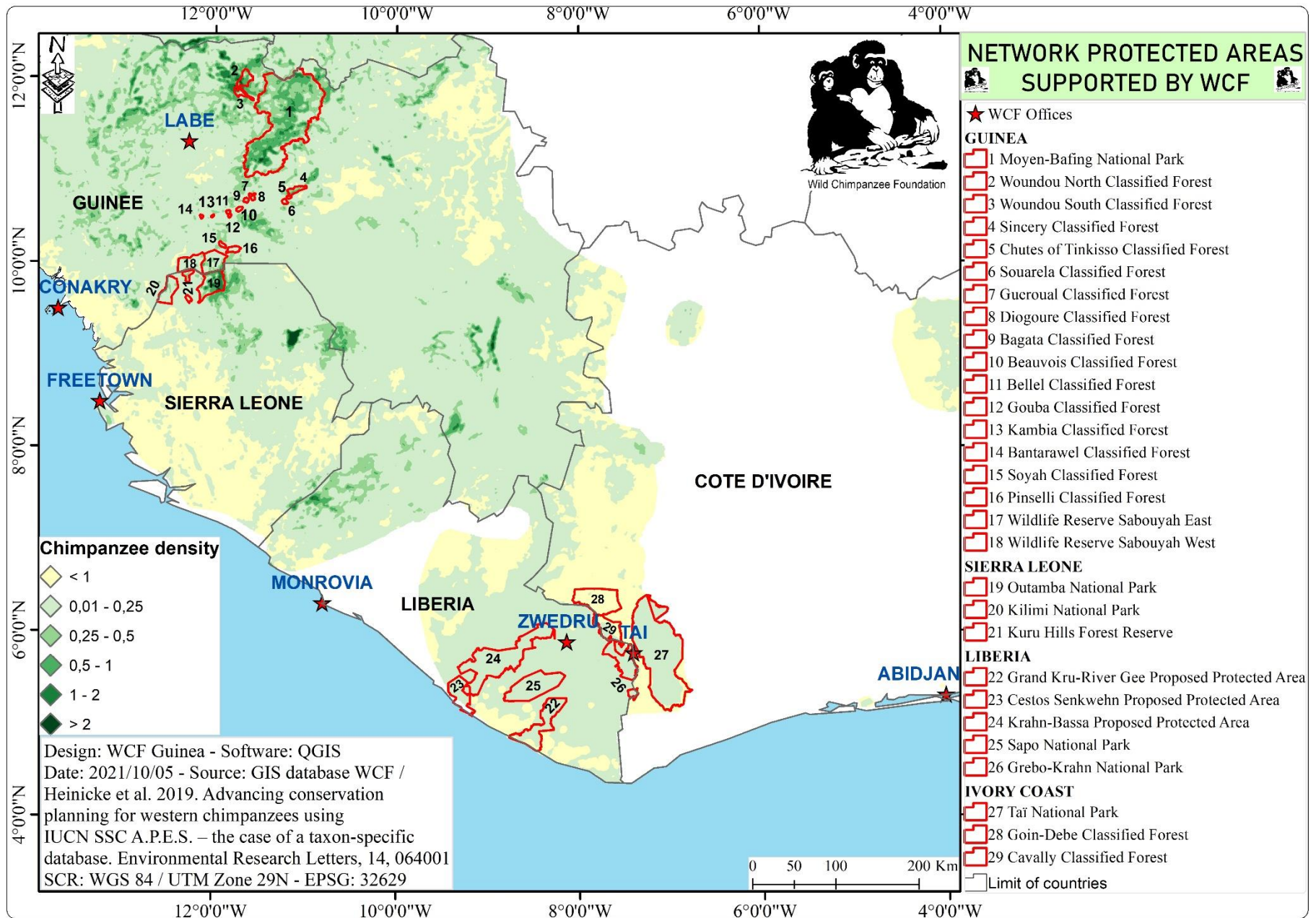
Wild Chimpanzee Foundation®

www.wildchimps.org



© Liran Samuni

Distribution and density of chimpanzees in West Africa



Strategic Plan of the Wild Chimpanzee Foundation

Goal

Protection of wild chimpanzees and their habitats

Strategic objectives

Strengthen support for conservation of chimpanzees and habitat

Strengthen protection of chimpanzee habitat

Strengthen sustainable management of chimpanzee and habitat

Develop research

Project objectives

Raise Awareness

Alternative benefits for populations

Increase environment interest in policy decision

Follow population trends

Improved protected area management

Sustainable funding for PAs

Sustainable logging practices

Sustainable mining practices

Understand processes affecting population trends

Activities

Environment education

Alternative sustainable livelihood

Advocacy

Monitoring

Law enforcement

Ecotourism

Monitoring logging practices

Monitoring mining practices

Research

Theatre
Film
Newsletter
Discussion round
Club PAN

Pilot project with populations
Training of locals
Employment for locals

Lobbying by decision makers
Awareness meetings
Consultancy for inclusion of environment issues

Regular report of animal and habitat status
Impact of law enforcement
Impact of bushmeat hunting

Training of game wardens
Establishment of management plan
Improvement of PA patrols
Better application of law in courts

Entrance fee
Nature trails
Animal viewing

Impact of logging practices
Best practices management plan
Capacity building

Impact of mining practices
Mitigation and offset management plan
Capacity building

New monitoring tools
New evaluation tools
Capacity building
Chimpanzee mortality study - disease

Philosophy of the Wild Chimpanzee Foundation



- **Work to protect the chimpanzees and their habitat with local communities,**
- **Support the local authorities' goal of increasing protected areas,**
- **Empower the local population for climate-intelligent activities.**

WCF Guinea



← WCF Labé team
for the Moyen-Bafing
National Park



← WCF Conakry
team

WCF Mamou team
for the Outamba-Kilimi and
Kuru-Hills landscape in Sierra
Leone and Penselli, Soyah and
Sabouyah region in Guinea
(OKKPSS)



WCF Guinea - Creation of the Moyen-Bafing National Park

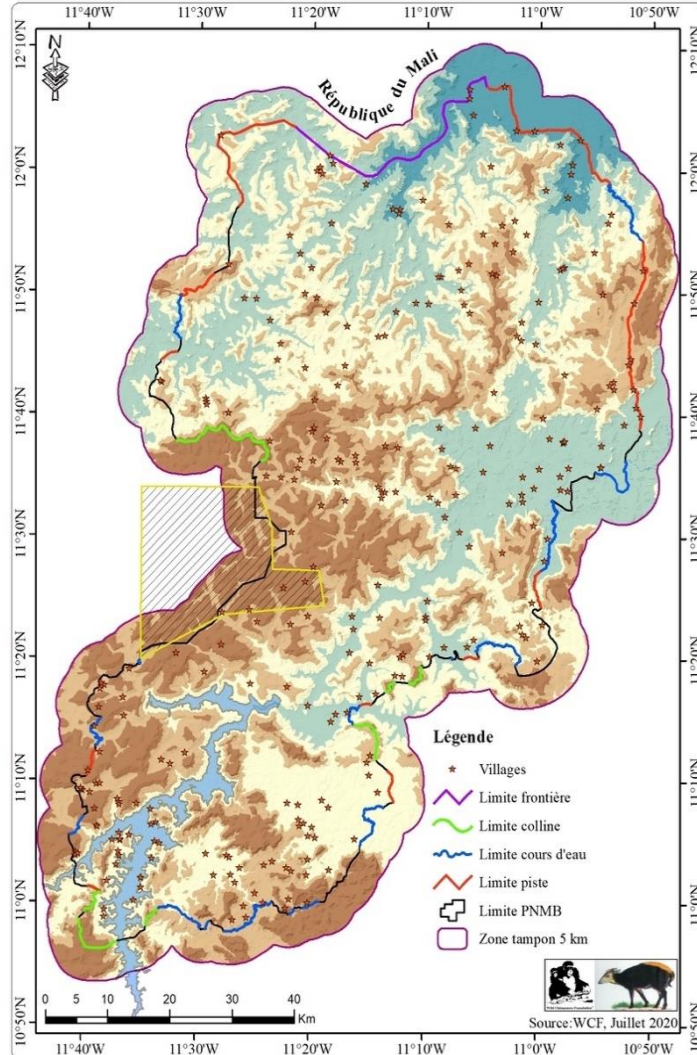
4th May 2021

The President of the Republic of Guinea, Professor Alpha Conde, signed the decree of the Moyen-Bafing National Park.

6767 km² and the largest West African chimpanzee population (over 5000 chimpanzees) are now under protection.

The park is inhabited by local communities of 36,000 persons / 287 villages.

Biodiversity offset of 2 mining companies under an IFC scheme.



Redefined external boundaries of the Moyen-Bafing National Park, including the Toubal mining concession (yellow polygon); the physical features that form the basis of the different boundary sections are designated by segments of coloured lines (boundary - purple, mountains/hills - green, waterways - blue, and roads/trails - red)

WCF Guinea - Camera trap monitoring in Moyen-Bafing National Park

Chimpanzee

Est. abundance: 3,246 (range: 2,186 – 4,854)

Est. density: 0.74

Bushbuck

Est. abundance: 5,003 (range: 3,673 – 6,778)

Est. density: 1.14

Red-flanked duiker

Est. abundance: 7,381 (range: 3,891 – 14,037)

Est. density: 1.69

Vervet monkey

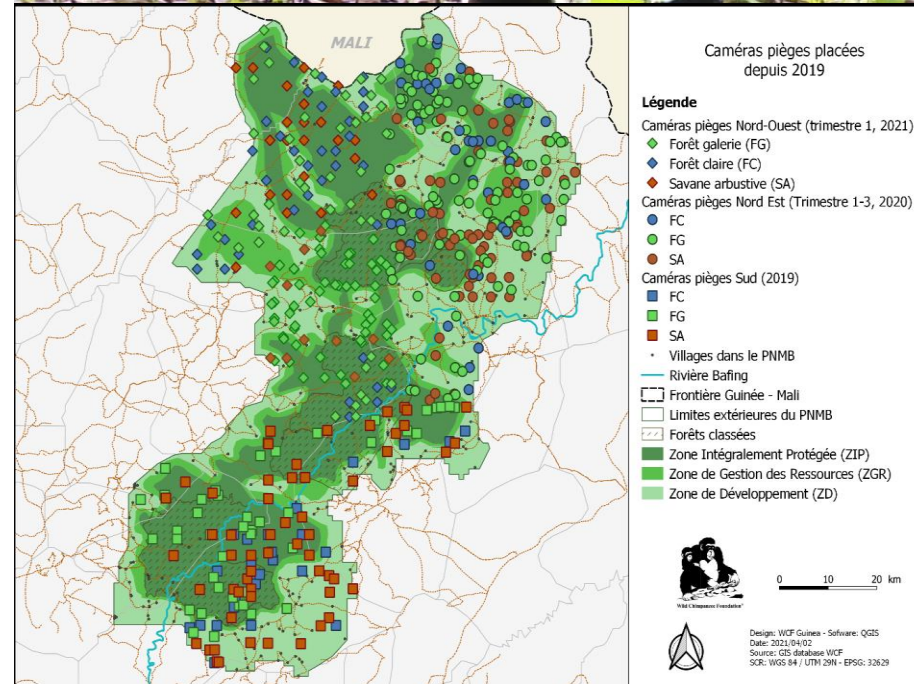
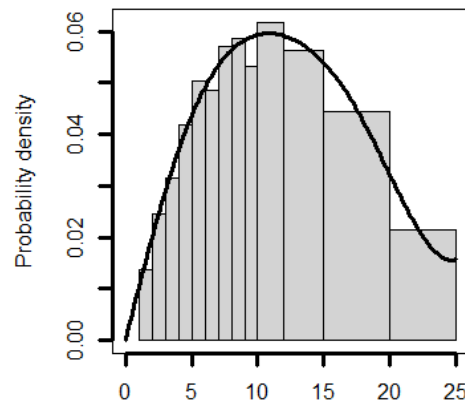
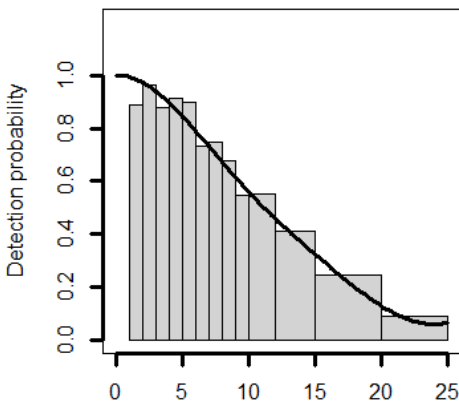
Est. abundance: 5,690 (range: 4,416 – 7,346)

Est. density: 1.30

Warthog

Est. abundance: 9,177 (range: 7,171 – 11,763)

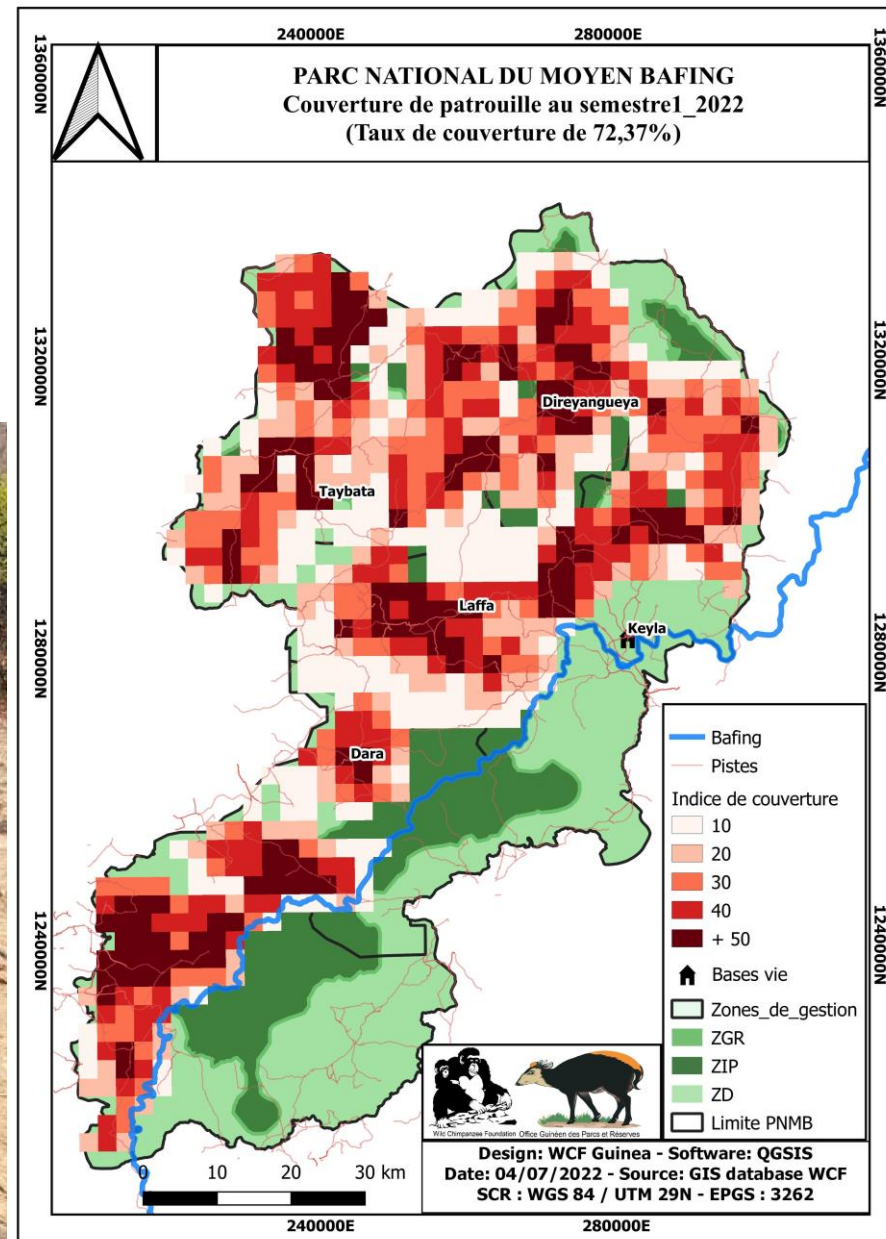
Est. density: 2.10



WCF Guinea – Law enforcement in the Moyen-Bafing National Park

Monthly surveillance patrols in 2022:

- 86 patrols conducted covering 10,983 km;
- 26,279 observations of medium to large wild mammals;
- 595 signs of illegal activities.



WCF Guinea – Law enforcement in the Moyen-Bafing National Park



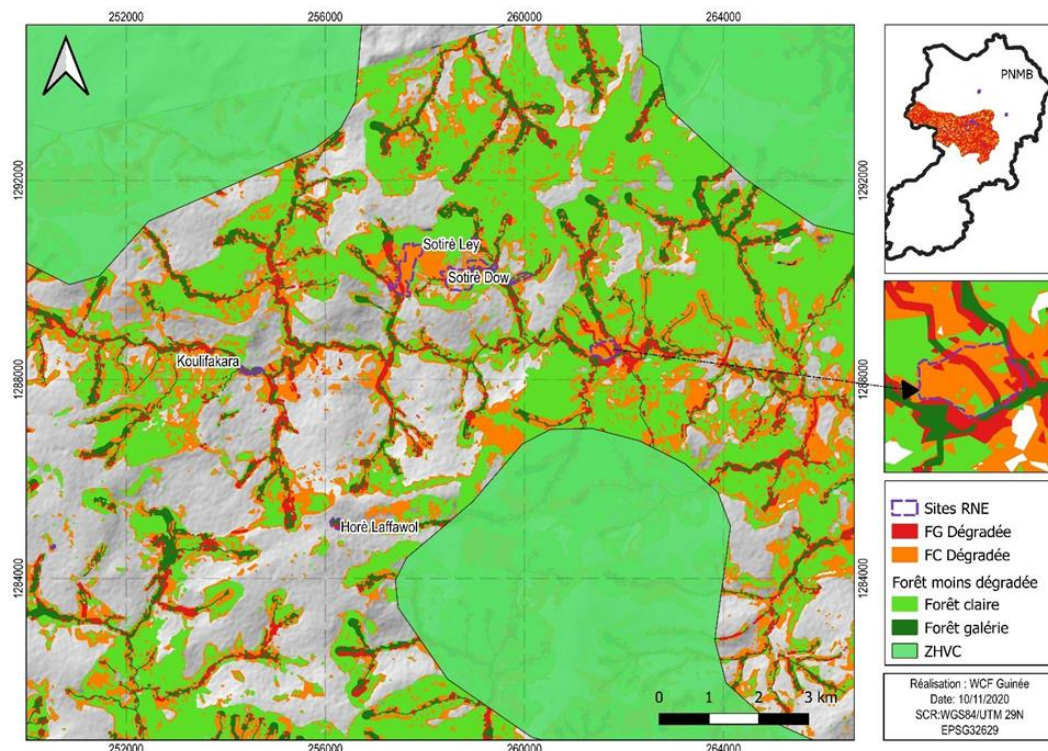
13 arrests made following illegal activities in the MBNP:

- 5 cases of illegal logging;
- 3 cases of illegal possession of bushmeat (total of 19 bags);
- 4 cases of killing of protected species (3 hippopotamus & 1 crocodile)
- 1 case of camera trap theft



WCF Guinea – Natural Ecological Regeneration in the Moyen-Bafing National Park

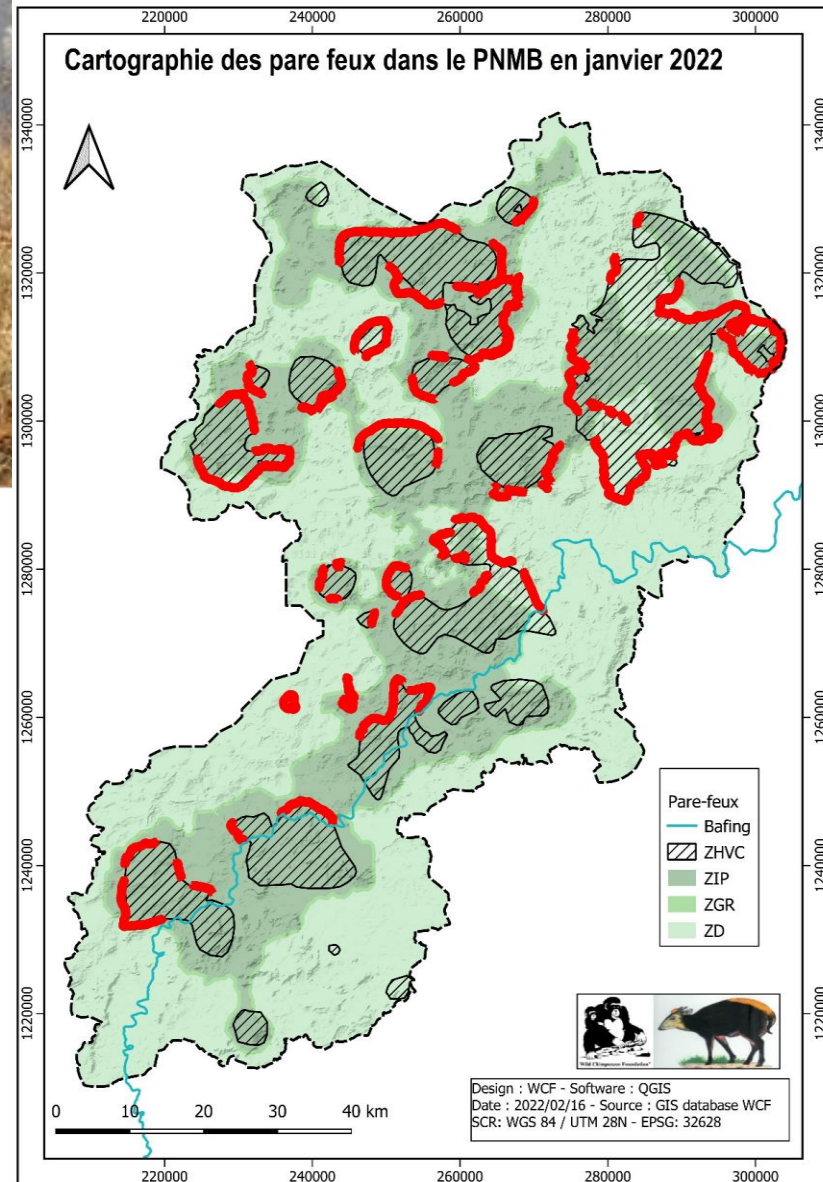
- 568.5 ha in the park are benefiting from Natural Ecological Regeneration efforts;
- 15 growth-monitoring plots;
- growth rate data is being collected from 13,513 trees;
- 2022 survival rate of 95 – 106%



WCF Guinea – Bushfire management in the Moyen-Bafing National Park

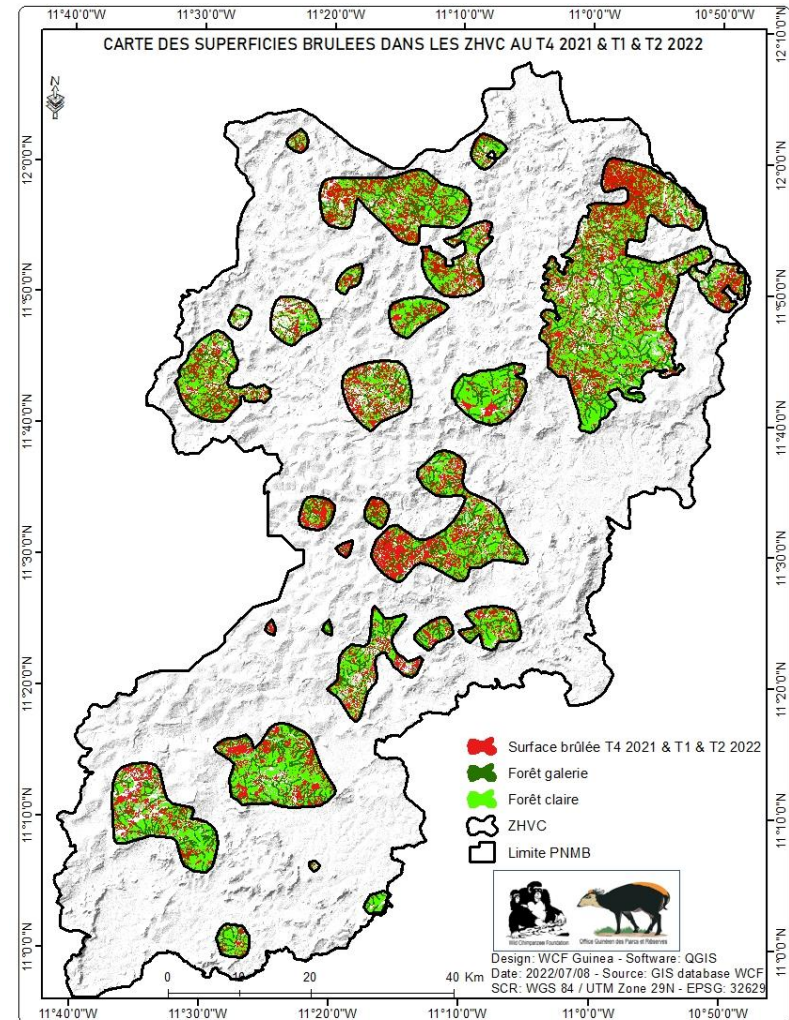
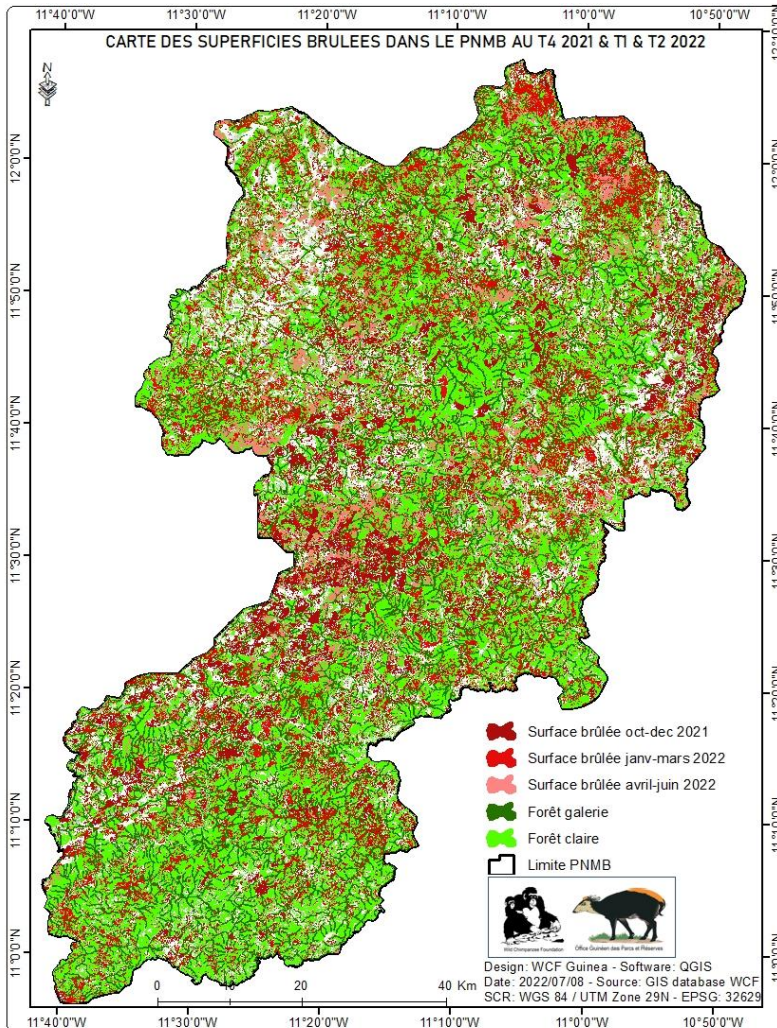


- 554 km of fire breaks created with the involvement of 11,821 community members;
- 373 prescribed burning activities conducted;
- 2,563 participants in awareness sessions about wildfire management.



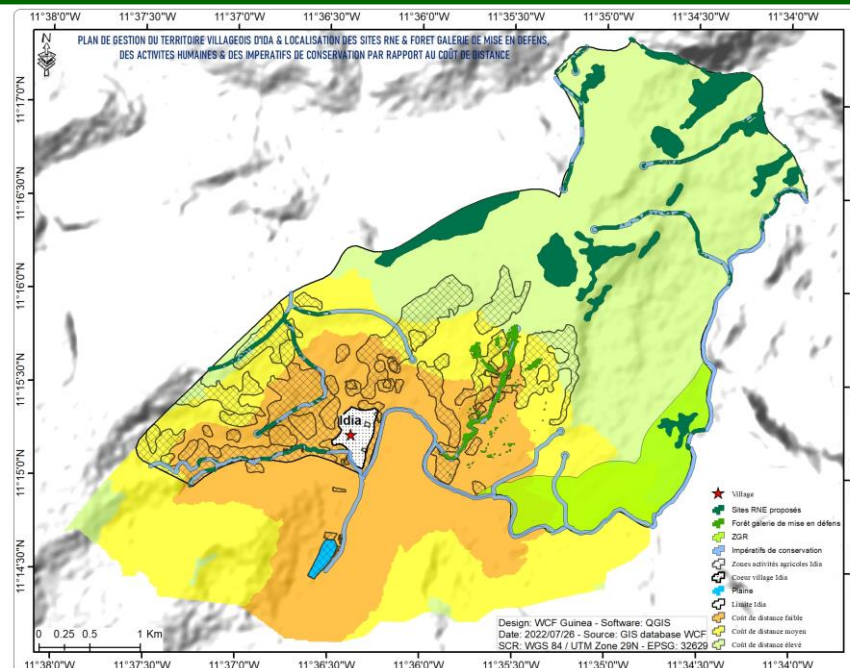
WCF Guinea – Bushfire management in the Moyen-Bafing National Park

- 31.2% of the MBNP burned during the 2021-2022 fire season;
- 74 - 81% of gallery and open forests protected from wildfire damage in the 27 high conservation value areas and within the entire MBNP



WCF Guinea – Community-based management of the Moyen-Bafing National Park

- 4,758 community members involved through 49 CVCDs, 13 UCs, and 15 Fatières;
- 11 new participatory maps (total of 42 to date);
- 8 Village Land Management Plans (VLMP) including income maintenance plans finalized;
- 15 local development plans finalized in the 15 communes of the park.



WCF Guinea – Community development in the Moyen-Bafing area

**2163 community members organized
in 72 cooperatives**



Market gardening



Bee-keeping



Farmer-managed natural regeneration



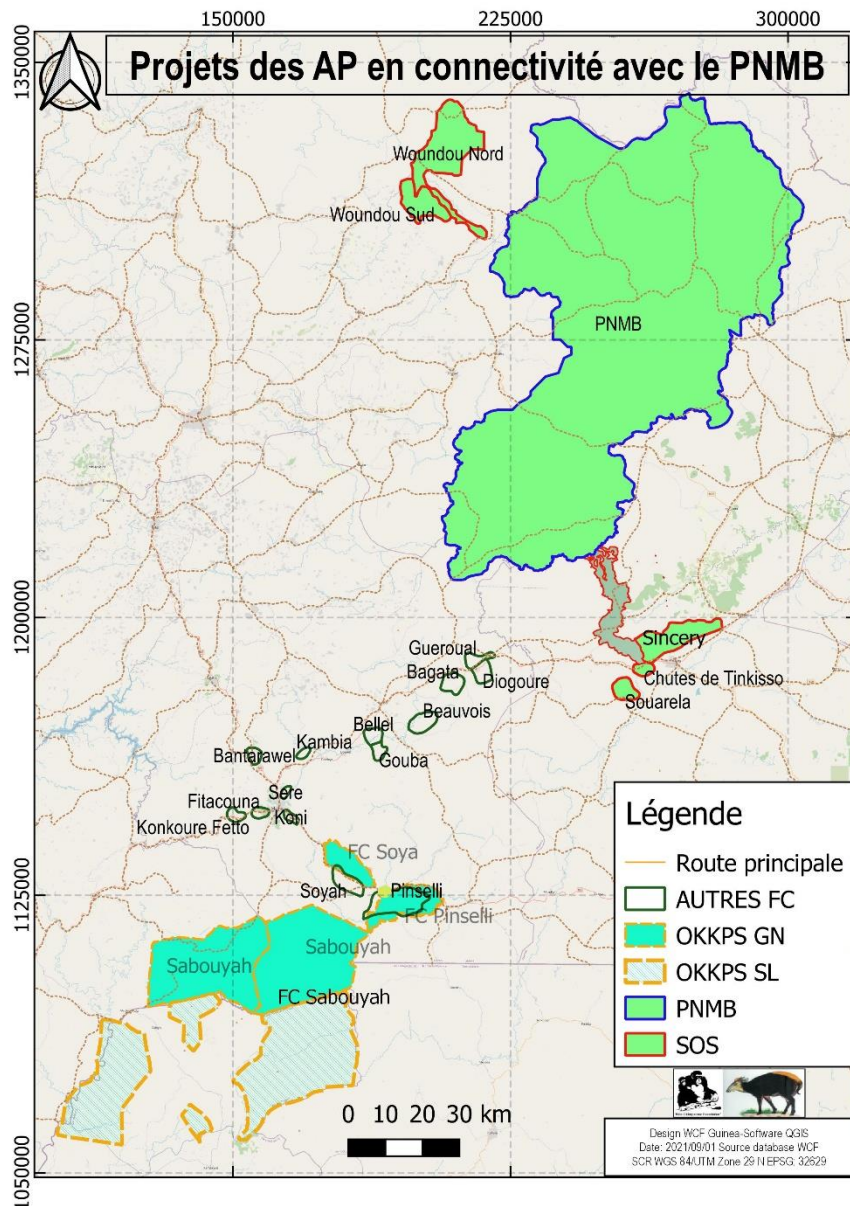
Shea butter production

WCF Guinea – Education and awareness in the Moyen-Bafing area

- *Cercles d'écoute*: 3441 participants in 149 villages
- Theatre tour: 2099 participants in 5 villages
- Club P.A.N.: 900 children in 10 schools in the Moyen-Bafing region



WCF Guinea – Transboundary EU project

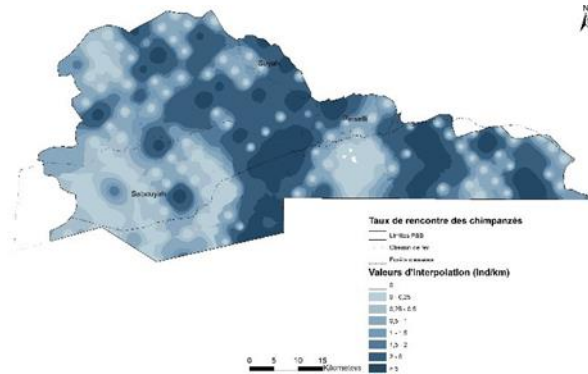


Transboundary EU project: Towards a participative, inclusive and sustainable management of the forest landscape complex of Outamba-Kilimi (Sierra Leone), Kuru Hills (Sierra Leone) and Pinselli-Soya (Guinea)

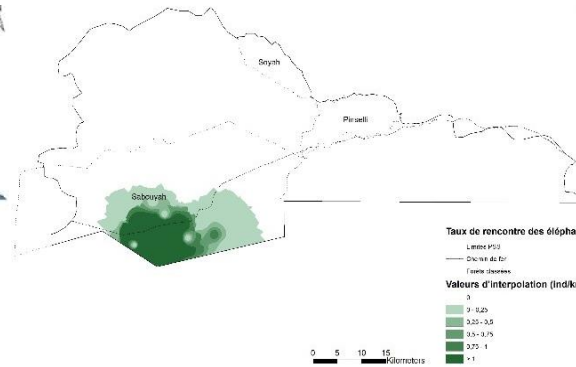


WCF Guinea – Transboundary EU project - Biomonitoring

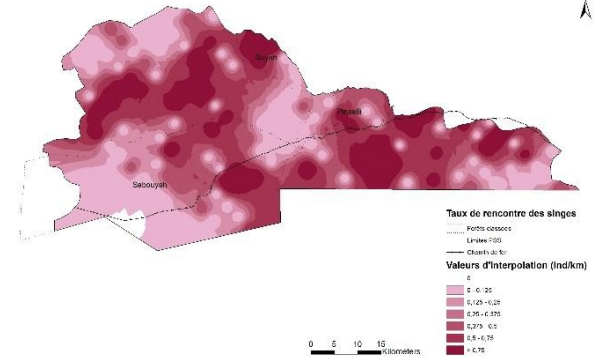
Western chimpanzees



Forest elephants



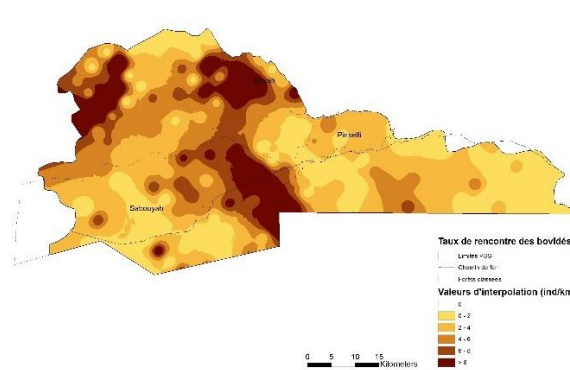
Primates



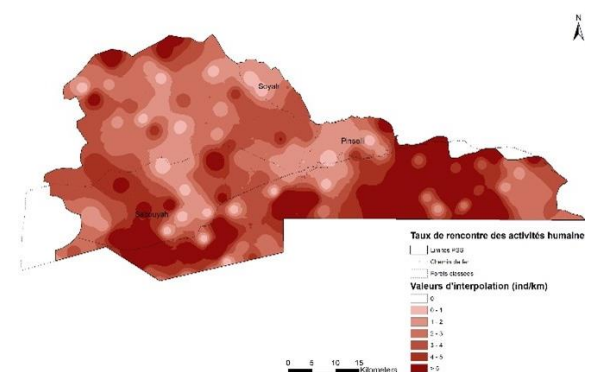
Preliminary biomonitoring results in the OKKPS landscape:

Encounter rates for chimpanzees, elephants, primates, bovids, and illegal activities recorded during line transect surveys from March to November 2022.

Bovids



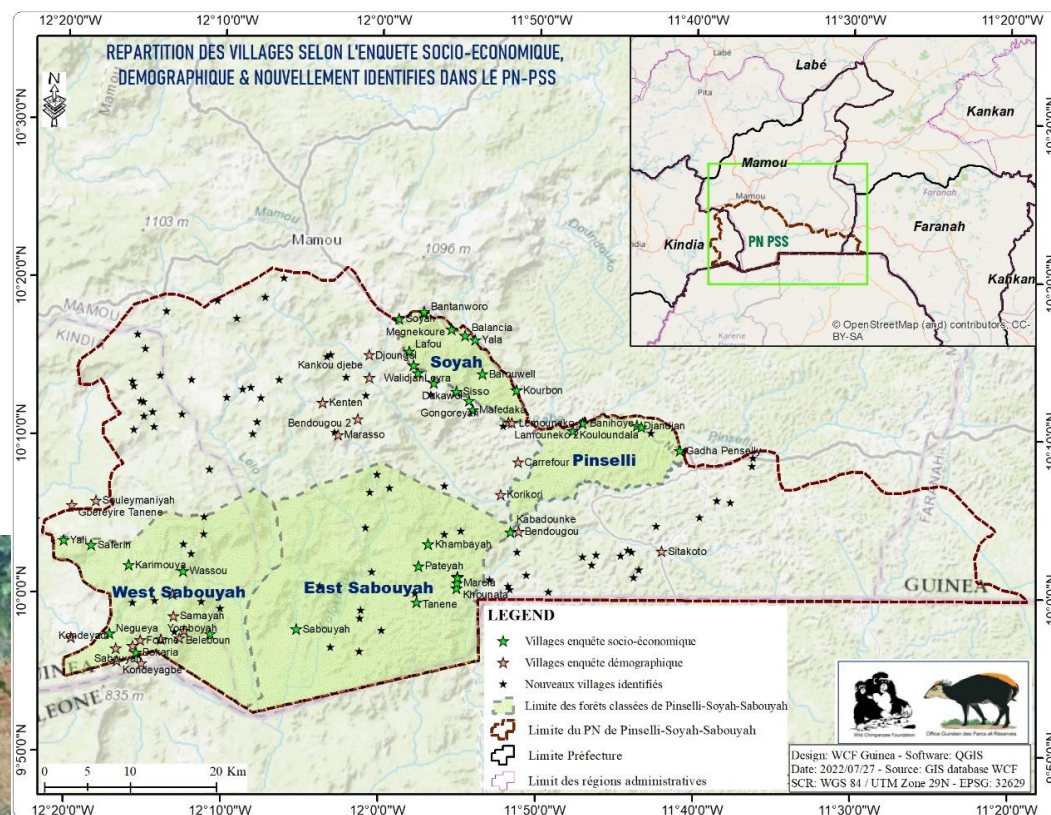
Illegal activities



WCF Guinea – Transboundary EU project

Socioeconomic and demographic surveys

- Socioeconomic data collected on 448 households in 36 villages
- Demographic data collected on 129 villages; 34,443 individuals to date



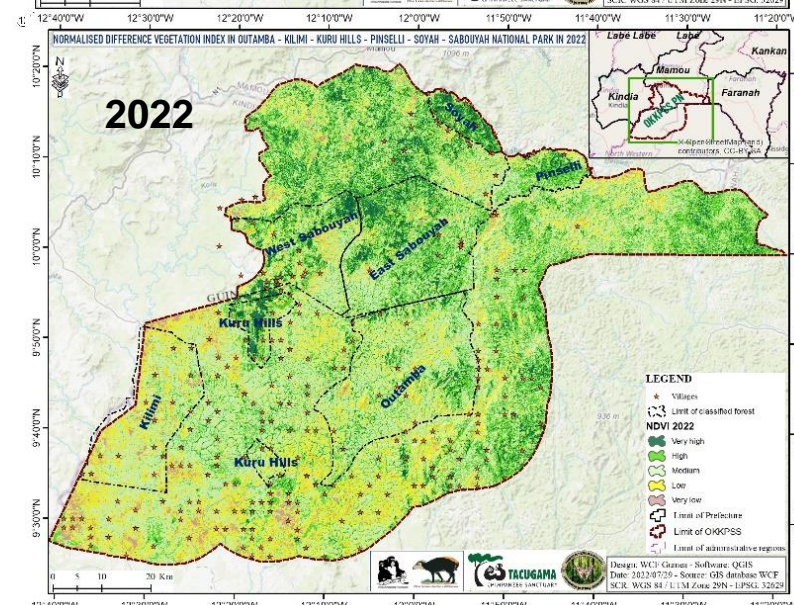
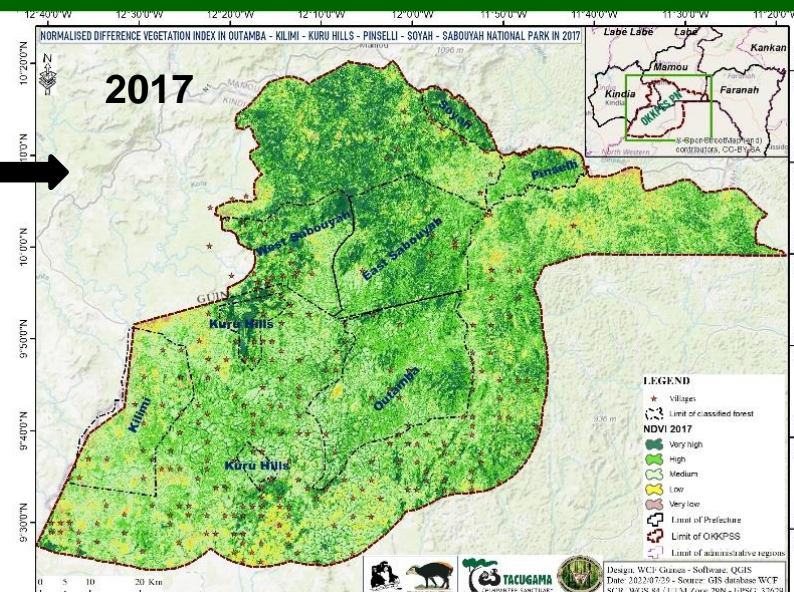
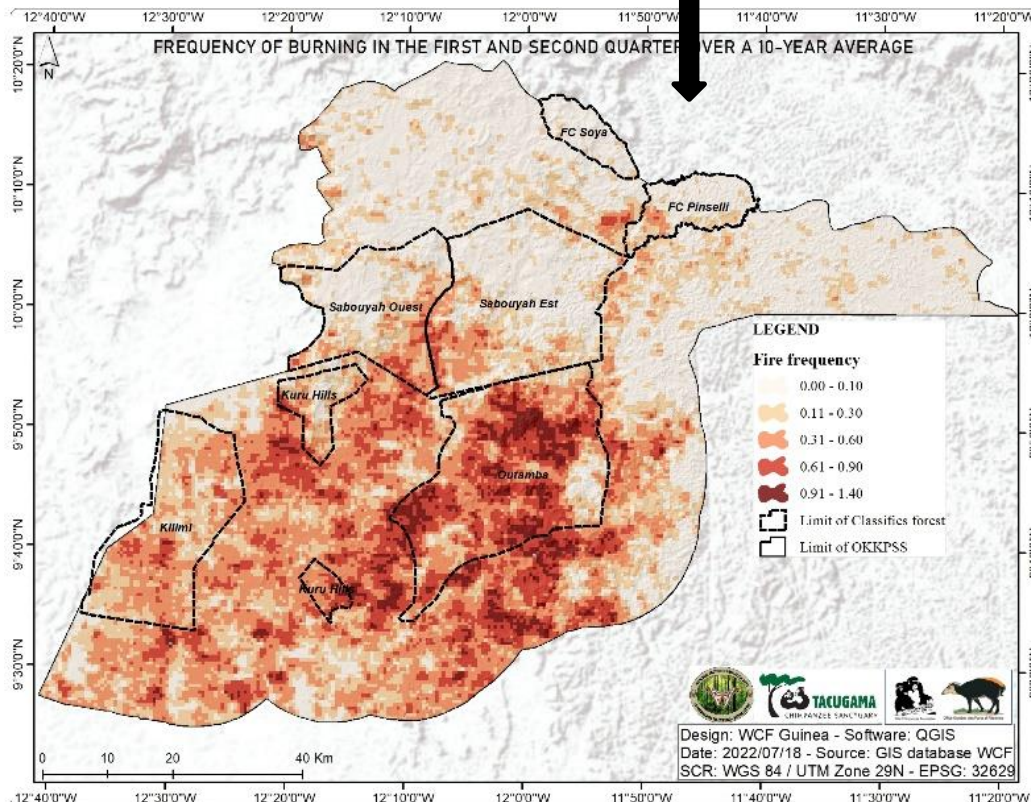
WCF Guinea – Transboundary EU project

Bushfire management

Preliminary analyses:

Comparison of the vegetation health of the landscape in 2017 and 2022

Surface of the OKKPS landscape burned in the last 10 years



WCF Guinea – Transboundary EU project Creation of the Pinselli-Soyah-Sabouyah National Park

Steps towards the park creation:

- Presentation of the PSSNP project to all stakeholders,
- Ministerial mandate signed by the Minister of Environment and Sustainable Development,
- Baseline studies being conducted (biomonitoring, socioeconomic and demographic studies, etc.),
- First consultation meeting with communities to obtain their free, prior, and informed consent,
- Draft of a ministerial decree.



WCF Guinea – Transboundary EU project Creation of the Pinselli-Soyah-Sabouyah National Park



Monthly field visits to the railway construction site to control the implementation of the Environmental and Social Management Plan (ESMP) and mitigation measures of WCSR/Rio Tinto.

Workshop to develop a cohabitation strategy between the projects of development and conservation in the PSSNP landscape.



WCF Liberia

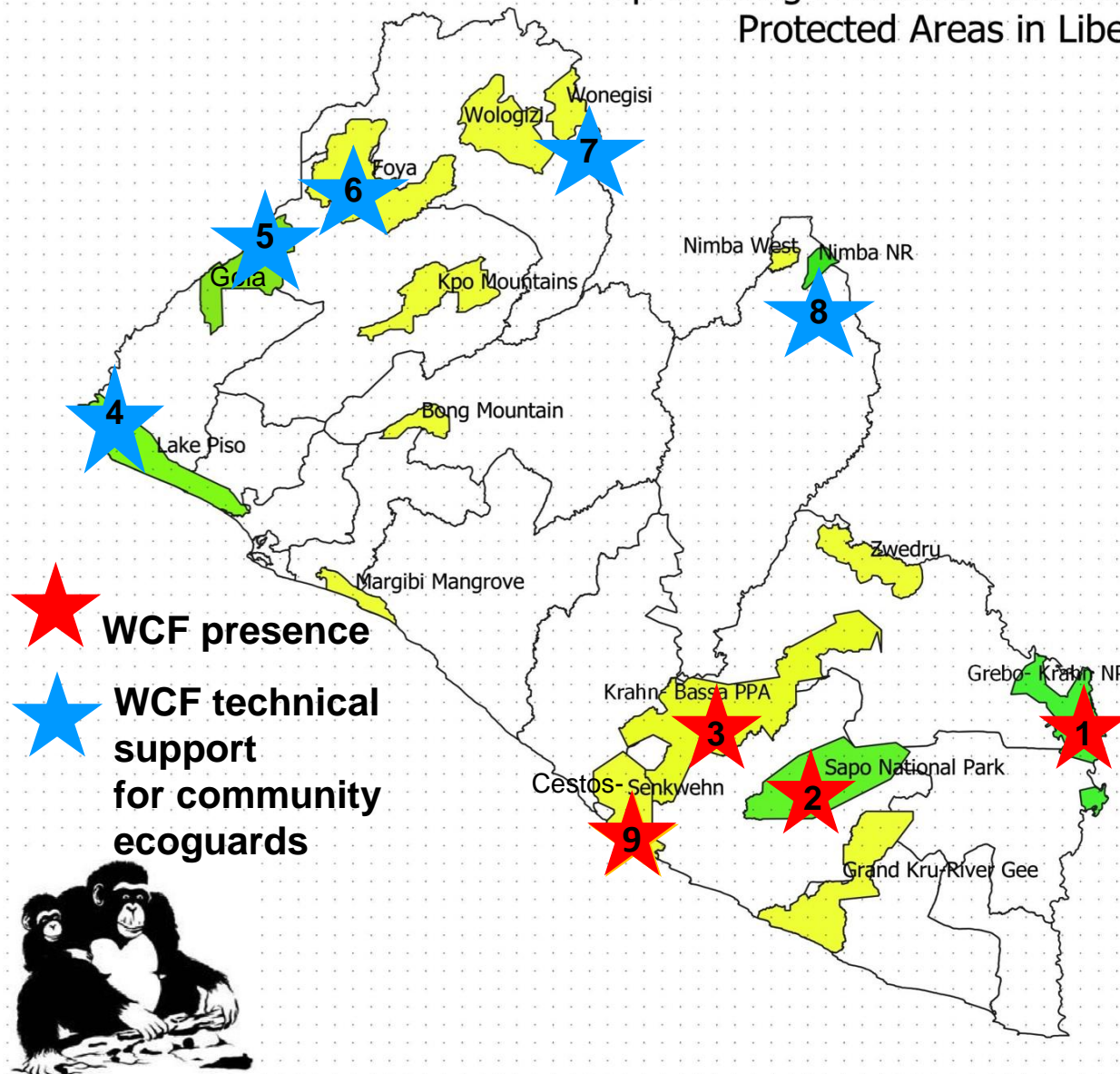
WCF Zwedru team



WCF Liberia

Map showing Protected Areas and Proposed Protected Areas in Liberia

Protected Area
Proposed Protected Area (PPA)



- 1) Grebo-Krahn National Park
- 2) Sapo National Park
- 3) Krahn-Bassa PPA
- 4) Lake Piso Multiple Sustainable Use Reserve
- 5) Gola Forest National Park
- 6) Wonegizi PPA
- 7) Foya PPA
- 8) East Nimba Nature Reserve
- 9) Cestos-Senkwehn PPA



WCF Liberia – current projects

Name of project	Donor
1) Continuous support for Community Ecoguard Program and community-based ecotourism in south-eastern Liberia to protect Liberia's remaining critically endangered chimpanzees	Rettet den Regenwald e.V. / Rainforest Rescue
2) Community ecoguards provide improved protection for western chimpanzees at Krahn-Bassa Proposed Protected Area, south-eastern Liberia	Great Ape Conservation Fund/USFWS
3) Consulting Services Contract to Prepare Gazettement Package for Krahn-Bassa Proposed Protected Area under the Liberia Forest Sector Project	Liberia Forest Sector Project
4) Empowering local women to reduce Illegal Wildlife Trade in Liberia	Illegal Wildlife Trade Challenge Fund
5) Krahn-Bassa: New national park for chimpanzees and pygmy hippos in Liberia	Rainforest Trust
6) Reducing deforestation and biodiversity loss in the Tai-Grebo-Krahn-Sapo (TGKS) landscape through community ecoguards, community-based ecotourism, biomonitoring, and targeted actions	WABiLED/USAID
7) Integrating population viability analysis and behaviour change methodologies for the West African chimpanzee (<i>Pan troglodytes verus</i>) in the Republic of Liberia	Jane Goodall Institute/USFWS

WCF Liberia - Creation and management of Protected Areas, with strong involvement of local communities

Current main target areas in southeastern Liberia:

- 1) Grebo-Krahn National Park (effective management)
- 2) Sapo National Park (involvement of local communities in management and ecotourism)
- 3) Krahn-Bassa Proposed Protected Area (Creation of a National Park)
- 4) Cestos-Senkwehn Proposed Protected Area (Creation of a National Park)



WCF Liberia – National and local community ecoguard programs

- 7 teams at Grebo-Krahn National Park, 8 at Krahn-Bassa Proposed Protected Area and 5 at Cestos-Senkwehn Proposed Protected Area,
- community members trained to patrol in forest and collect information on wildlife and illegal activities, and to raise awareness,
- use SMART software for data collection and reporting,
- support for community ecoguard program at other areas (in total ca. 250 active community ecoguards in Liberia) and establishment of national SMART database,
- Communities take ownership in active forest management and provide efficient protection,
- promotion of women working as community ecoguards.



WCF Liberia – Community ecoguard program at GKNP

Results from January to December 2022

Number of patrols completed: 42

Total distance covered: 1,211.6km

Total number of person days: 1,486

Number of human activities observed: 4,507 (3.72 signs/km)

Number of hunting activities observed: 3,781 (3.12 signs/km)

Number of wildlife observations: 1,075

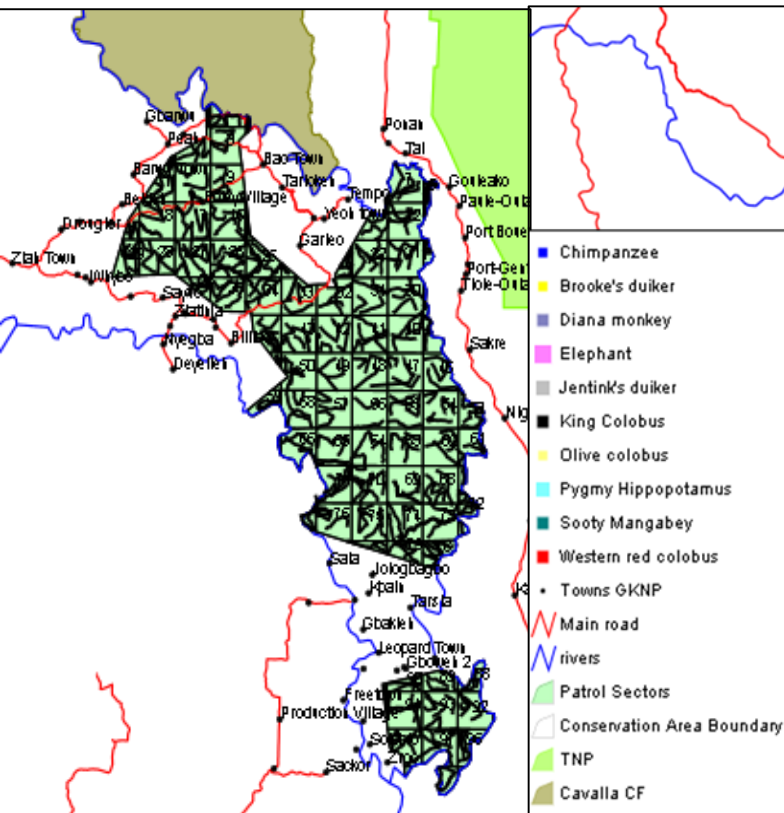
Number of awareness meetings held: 82

Number of people sensitized: 1,131

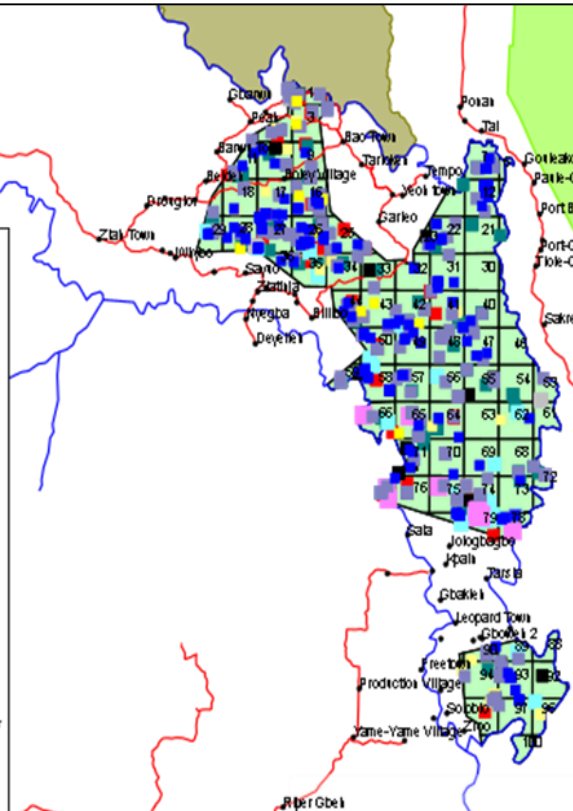


WCF Liberia – Community ecoguard program at GKNP

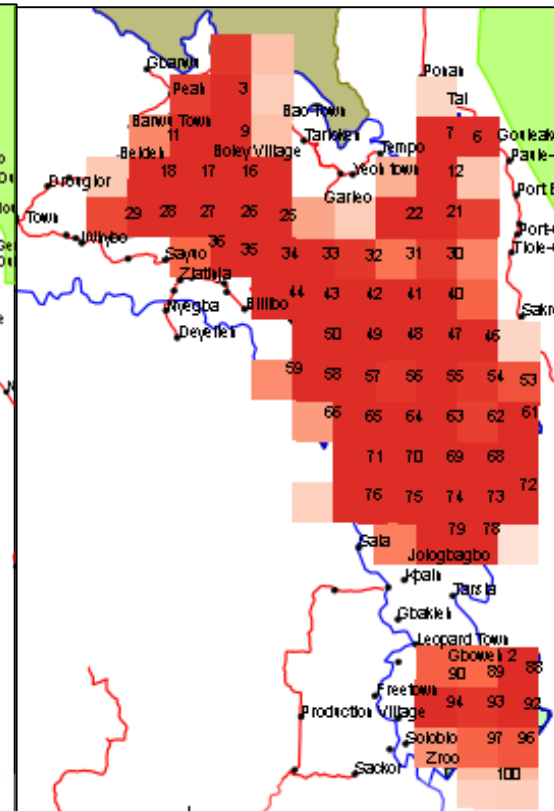
Ecoguard patrol coverage



Wildlife observations



Human activities encounter rate



WCF Liberia – Community volunteer program, awareness and theater

- Program with 34 female bushmeat sellers in Monrovia and Paynesville to raise awareness and change business in bushmeat markets,
- New project started in July 2022 to support nationwide 300 female bushmeat sellers to change business
- Ex-bushmeat sellers drama team conducted national market awareness tour in 2022.



WCF Liberia - Sustainable alternative livelihoods



- 307 beekeepers trained at GKNP and KBPPA
- Continuous collaboration with Universal Outreach Foundation/ Liberia Pure Honey

WCF Liberia – Community based ecotourism

- Continuous training for 10 tourist guides, Sapo Ecolodge staff and cultural troupe in 2022
- Adult literacy and business training for 10 local women to establish conservation enterprise for the co-management of Sapo Ecolodge



Sapo Ecolodge



WCF Liberia – Fight against the illegal wildlife trade

- Support for first national Wildlife Crime Task Force/joint security and creation of national wildlife crime database,
- Review of wildlife conservation and protected area management law and development of regulations (incl. updated list of protected species),
- Support for law enforcement activities and training,
- Coordination of law enforcement and biomonitoring sub-committees of Liberia Species Working Group.



WCF Liberia – Development of community infrastructure

- 5 hand pump water wells constructed in the GKNP and KBPPA regions,
- 3 bridges rehabilitated,
- 1 mobile network established in the Krahn-Bassa Proposed Protected Area region.



WCF Côte d'Ivoire



WCF team in Abidjan



WCF team in Taï

WCF Côte d'Ivoire – Camera trap monitoring in Taï National Park

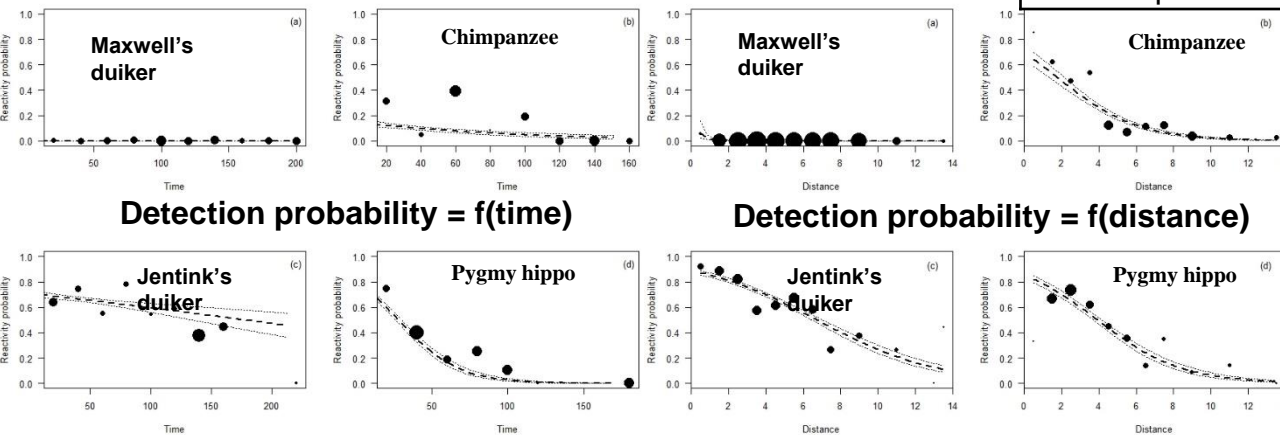
< ECOLOGY

Animal reactivity to camera traps and its effects on abundance estimate using distance sampling in the Taï National Park, Côte d'Ivoire

Research article Animal Behavior Biodiversity Conservation Biology Ecology Zoology

Noël Adiko Houa^{1,2}, Noémie Cappelle², Eloi Anderson Bitty^{1,3}, Emmanuelle Normand², Yves Aka Kablan², Christophe Boesch^{2,4}

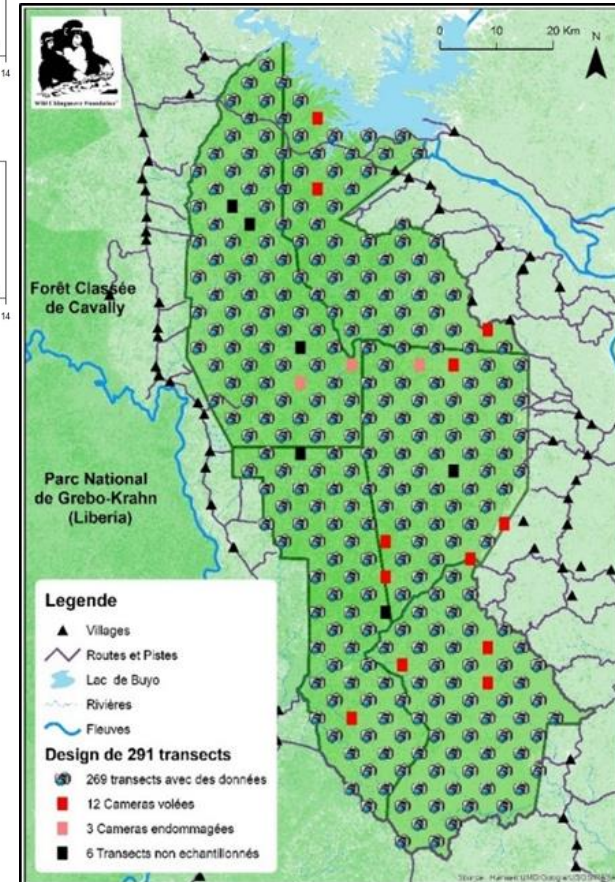
Species	CV%	Abundance		
		Estimation	Confidence Intervals	
Maxwell's duiker	10	113 468	92 416	137 122
Jentink's duiker	18	1 389	690	1 328
Pygmy hippo	26	1 255	731	1 763
Chimpanzee	43	1 236	472	2 504



79°F 26°C

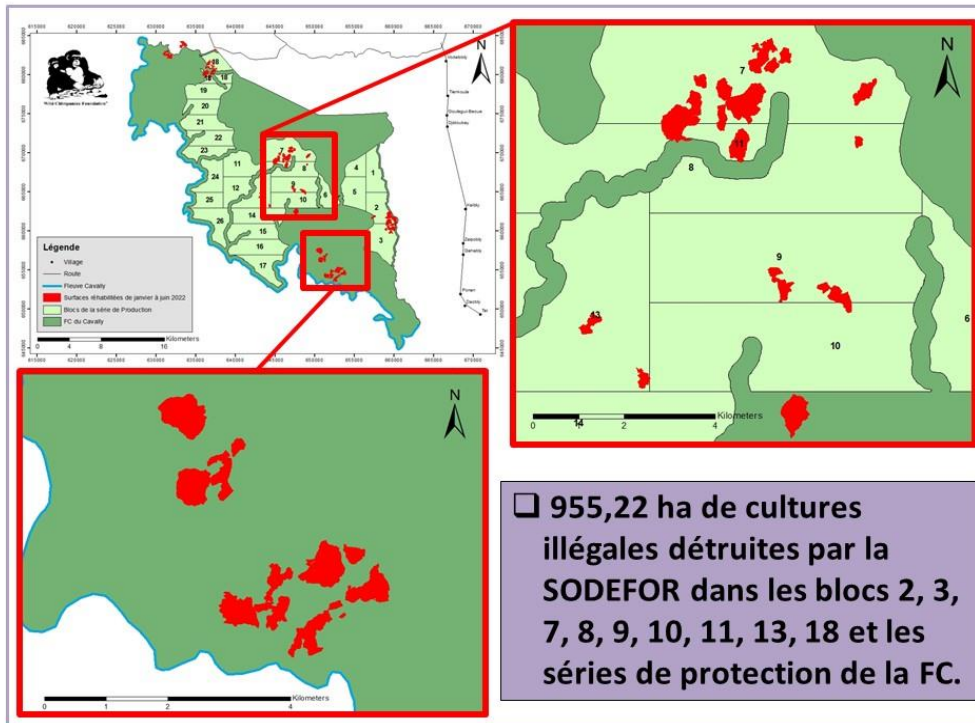
© Wild Chimpanzee Foundation

07-03-2019 13:45:12



WCF Côte d'Ivoire – Biomonitoring in Cavally Classified Forest

Resumption of monitoring activities with the recruitment and training of 10 ecoguards in September 2022.



WCF Côte d'Ivoire – Biomonitoring

Two training sessions organised:

- in June 2022: training on biomonitoring data analyses with the biomonitoring officers from Guinea, Liberia, and Côte d'Ivoire
- in September 2022 : training of research assistants to analyse biomonitoring data from Grebo-Krahn National Park and Taï National Park



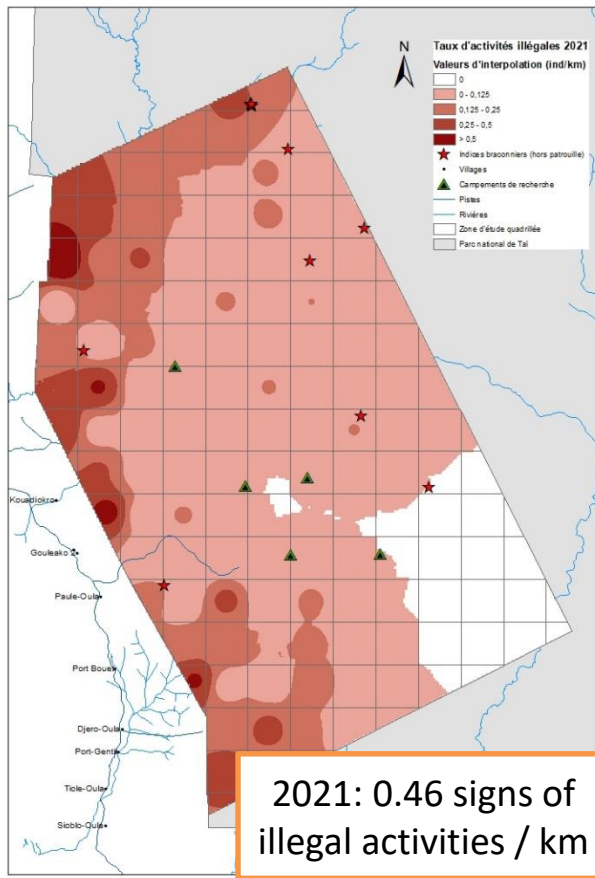
WCF Côte d'Ivoire – Biomonitoring

- Recruitment of a biomonitoring expert to supervise the biomonitoring activities in Côte d'Ivoire, Guinea, Sierra Leone, and Liberia: Dr. Anne-Sophie Crunchant,
- Installation of Zamba and first test with the 2019 -2020 Taï NP dataset,
- Systematic comparison of 5 camera trap models: => Braun Black550 as efficient as Bushnell CoreDS, but much cheaper (~45€ vs 200€), with a higher lens field-of-view and detection angle.

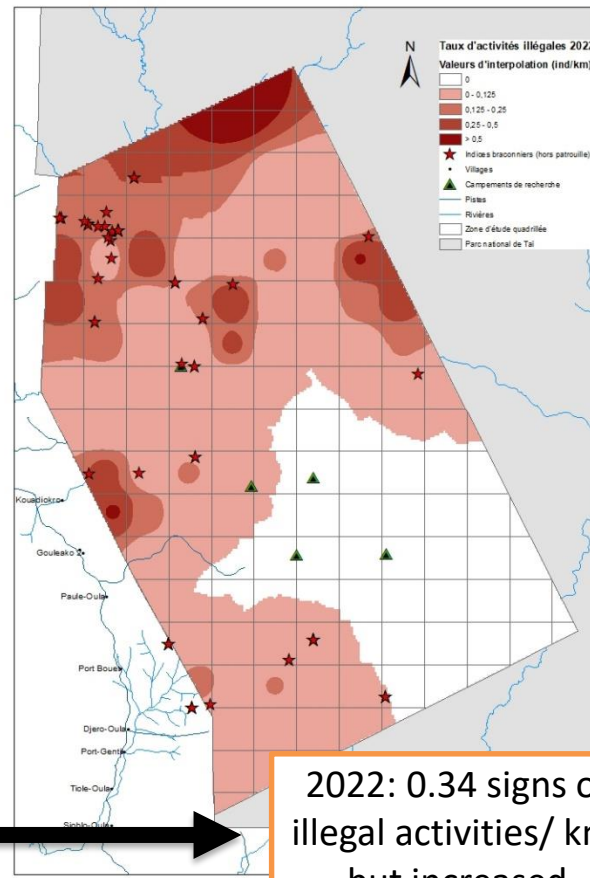


WCF Côte d'Ivoire – Ecoguards for Taï National Park

Two teams patrol in the ecotourism and research areas of the Taï National Park and are collecting SMART data.



2021: 0.46 signs of illegal activities / km



2022: 0.34 signs of illegal activities/ km, but increased activity in NW



WCF Côte d'Ivoire – Ecotourism in Taï National Park



- 14 ecoguides / 5 porters / 2 camp stewards
- 6 ecoguards
- 10 people involved in ecotourism initiatives (permaculture, honey, makoré, chocolate)
- 8 people involved in the bed & breakfast enterprise
- 178 tourists visited Taï Ecotourism in 2022, a steady increase following the COVID-19 setback
- Tourist satisfaction rate for WCF supported activities >92%

➔ 45 revenues linked with the ecotourism project



WCF Côte d'Ivoire – Education and awareness in the Taï region

- 1133 participants from 47 villages and camps joined the awareness raising sessions on zoonoses,
- Taï Ecomuseum hosted over 1000 visitors,
- The WCF team showed presentations in schools and celebrated the World Chimpanzee Day with traditional dances and games joined by 88 participants





Thank you!

© Liran Samuni

Grants and partners:



Rettet den Regenwald e.V.



RAINFOREST TRUST



fundación Charles Darwin foundation



UKaid from the British people



Bundesministerium für wirtschaftliche Zusammenarbeit und Entwicklung



British Embassy Monrovia



Wir helfen Tieren



MAX-PLANCK-GESellschaft



USAID FROM THE AMERICAN PEOPLE



TETRA TECH International Development



Schweizerische Eidgenossenschaft
Confédération suisse
Confederazione Svizzera
Confederaziun svizra



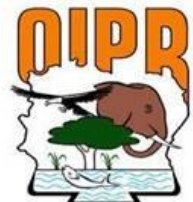
Norway's International Climate and Forest Initiative



Centre Suisse de Recherches Scientifiques en Côte d'Ivoire



WORLD BANK GROUP



CRITICAL

ECOSYSTEM PARTNERSHIP FUND

Liberia Forest Sector Project