



# Annual Report 2024

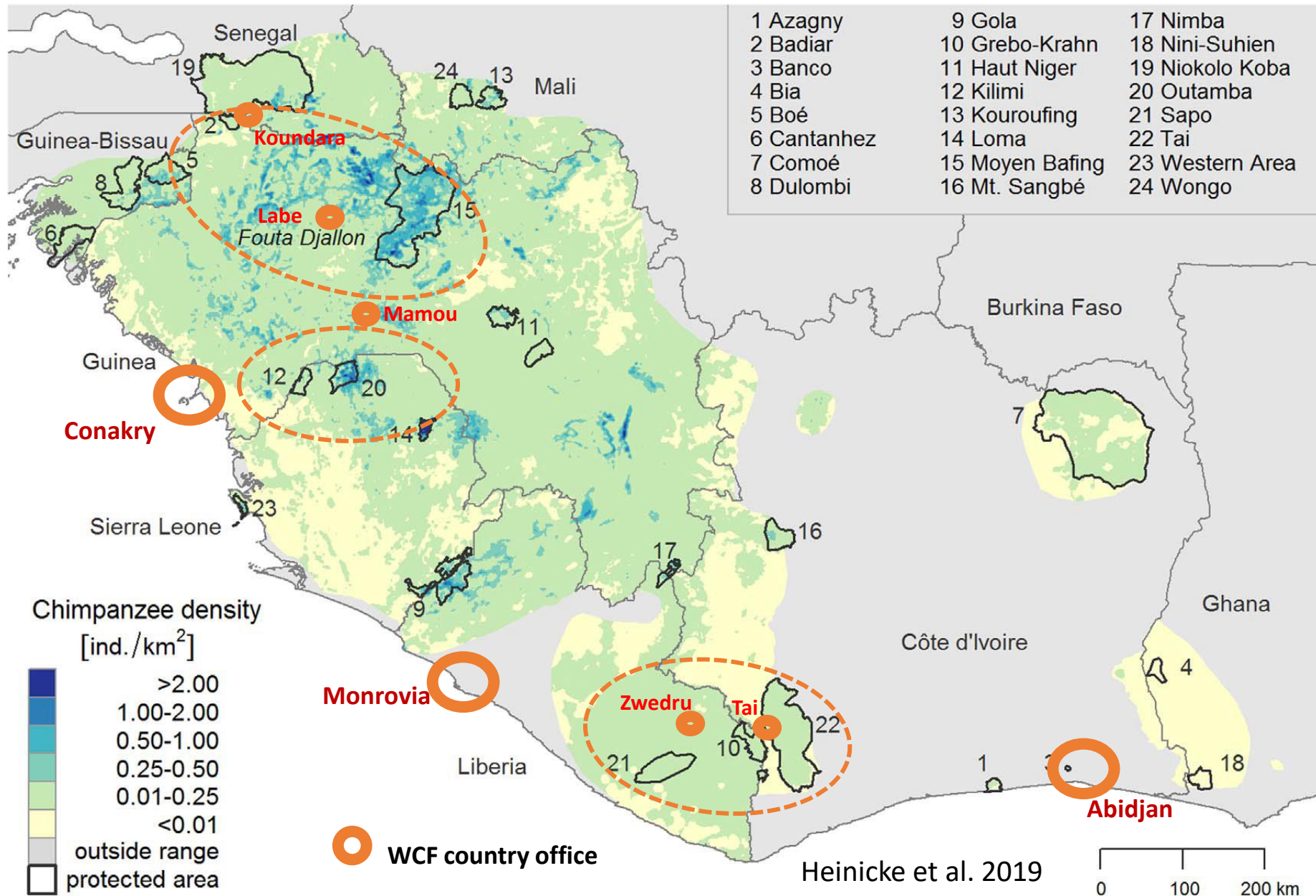
[www.wildchimps.org](http://www.wildchimps.org)



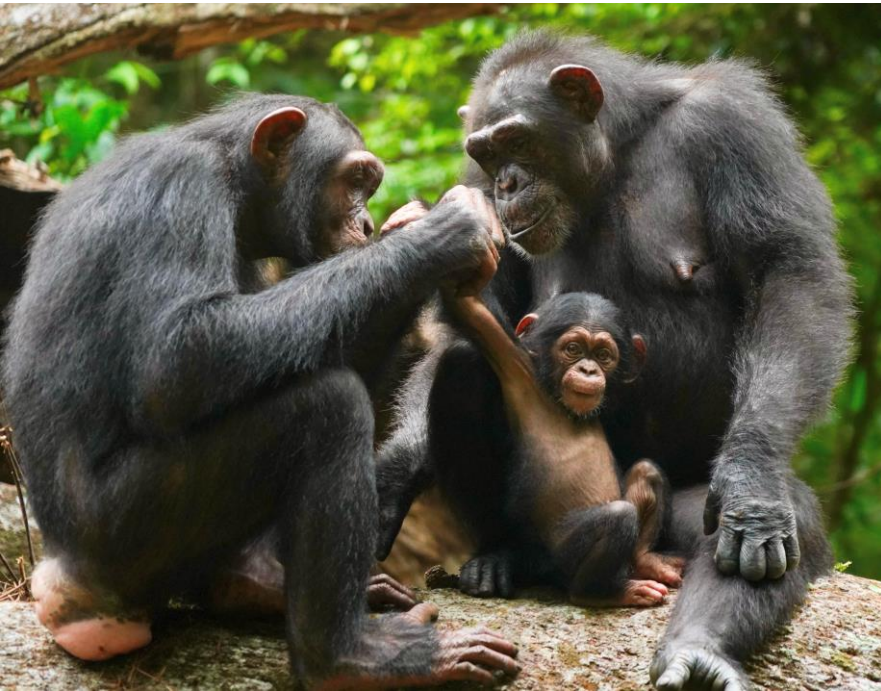
© Liran Samuni / Tai Chimpanzee Project



# Where we work and distribution of chimpanzees in West Africa



# Philosophy of the Wild Chimpanzee Foundation



- Work to improve the future for the chimpanzees and their habitat,
- Support the local authority's goal of increasing protected areas,
- Support and empower the local communities to develop climate-intelligent activities.



## Achievements of the Wild Chimpanzee Foundation

- **2018:** Creation of Grebo Krahn National Park, Liberia
- **2021:** Creation of Moyon-Bafing National Park, Guinea
- **2023:** Creation of Cavally Nature Reserve, Côte d'Ivoire
- **2025:** Planned creation of Kwa National Park, Liberia
- **2025:** Planned creation of Penselli-Soyah-Sabouyah National Park, Guinea





# Strategic Plan of the Wild Chimpanzee Foundation

## Goal

**Protection of wild chimpanzees and their habitats**

## Strategic objectives

**Strengthen support for conservation of chimpanzees and habitat**

**Strengthen protection of chimpanzees and habitat**

**Strengthen sustainable management of chimpanzee and habitat**

**Develop research**

## Project objectives

Raise Awareness

Alternative benefit for populations

Increase environment interest in policy decision

Follow population trends

Improved protected area management

Sustainable funding for protected areas

Sustainable logging practices

Sustainable mining practices

Understand processes affecting population trends

## Activities

Environment education

Alternative sustainable livelihood

Advocacy

Monitoring

Law enforcement

Ecotourism

Monitoring logging practices

Monitoring mining practices

Research

Theatre  
Film  
Newsletter  
Discussion round  
Club PAN  
Radio

Pilot projects with local populations  
Training of locals  
Employment for locals

Lobbying by decision makers  
Awareness meetings  
Consultancy for inclusions of environment issues

Regular report of animal and habitat status  
Impact of law enforcement  
Impact of bushmeat hunting

Training of game wardens, ecoguards  
Establishment of management plan  
Improvement of protected area patrols  
Better application of law in courts

Entrance fee  
Nature trails  
Animal viewing  
Local culture

Impact of logging practices  
Best practices management plan  
Capacity building

Impact of mining practices  
Mitigation and offset management plan  
Capacity building

New monitoring tools  
New evaluation tools  
Capacity building



# WCF Guinea

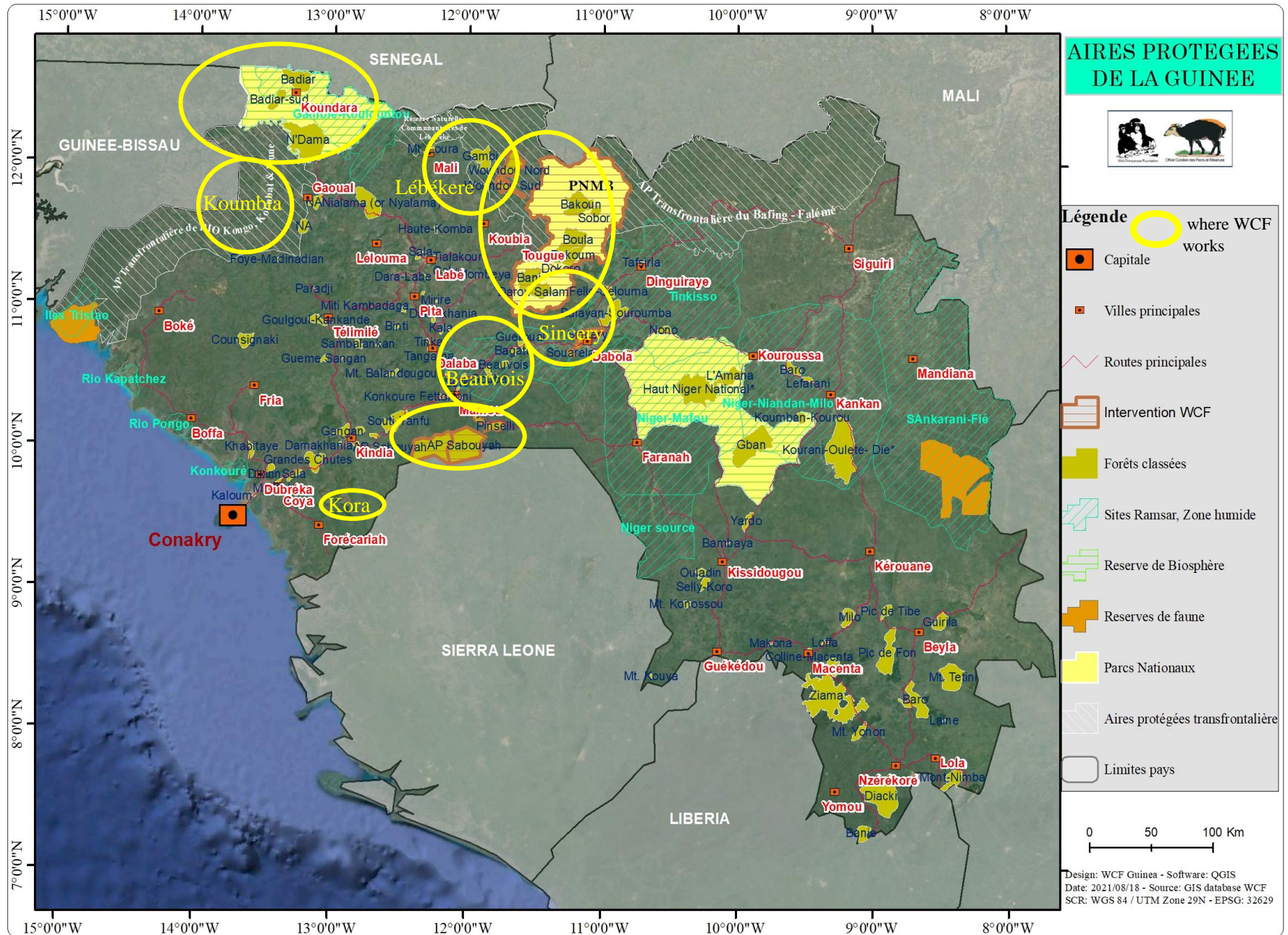


WCF-Guinea team at the team building workshop in November 2024





# WCF Guinea – Project locations



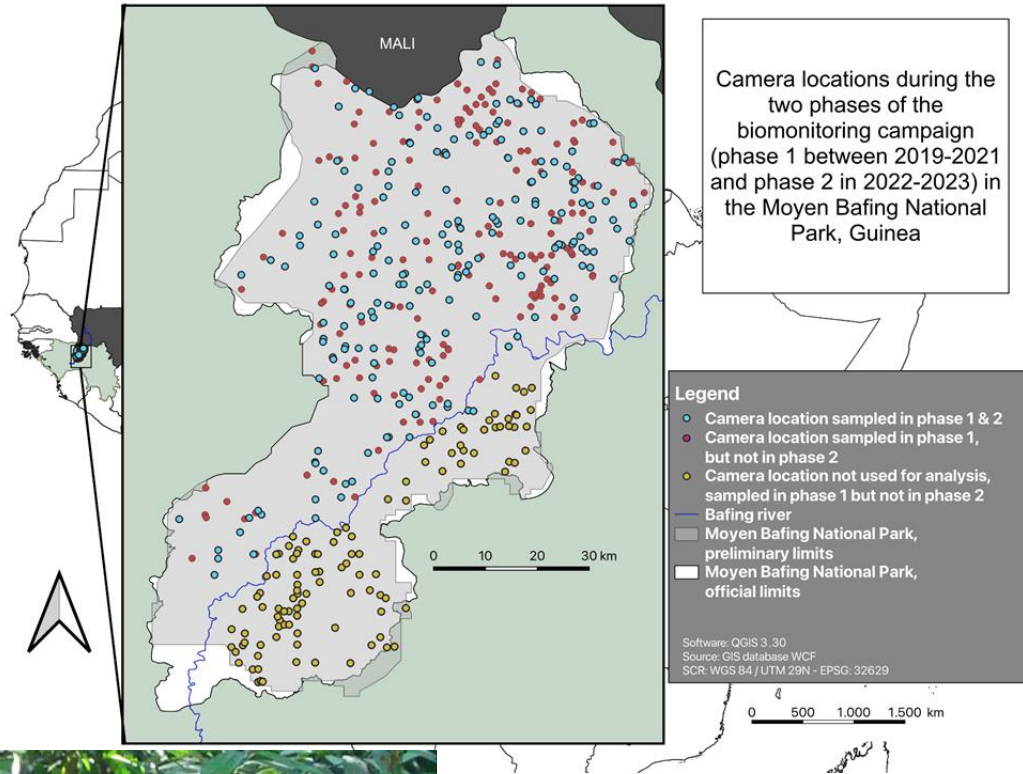


# WCF Guinea - Moyen Bafing National Park

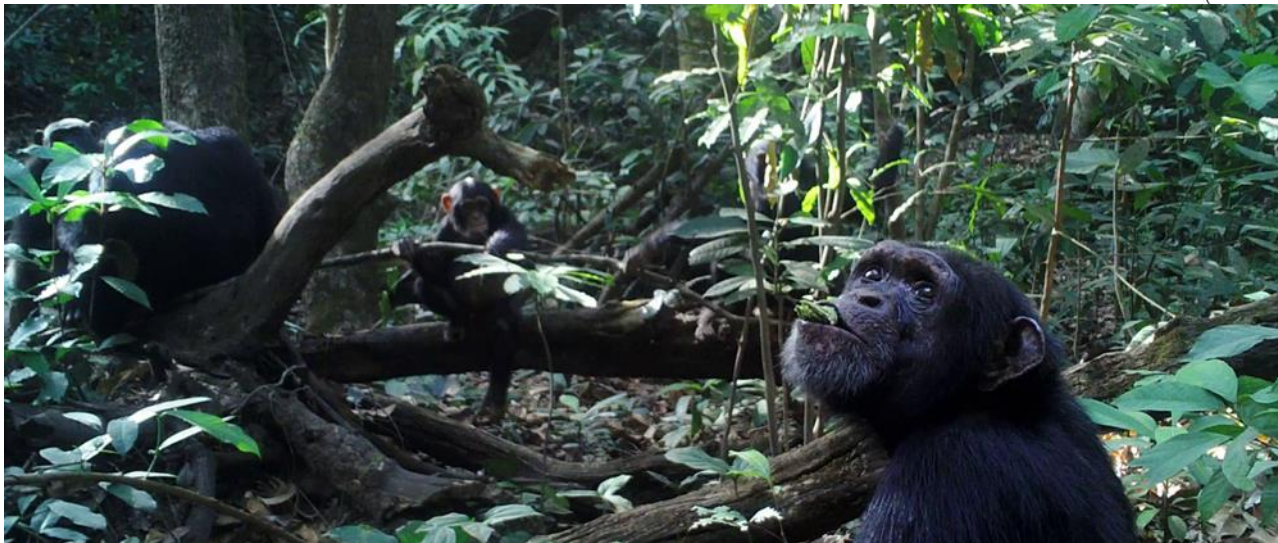
## Wildlife monitoring

### *Distance Sampling:*

- two phases of biomonitoring with camera traps, conducted between 2019 and 2021 (phase 1), and 2022 and 2023 (phase 2);
- 43 different large mammal species were captured with the camera traps;
- data analysis was finished in 2024.

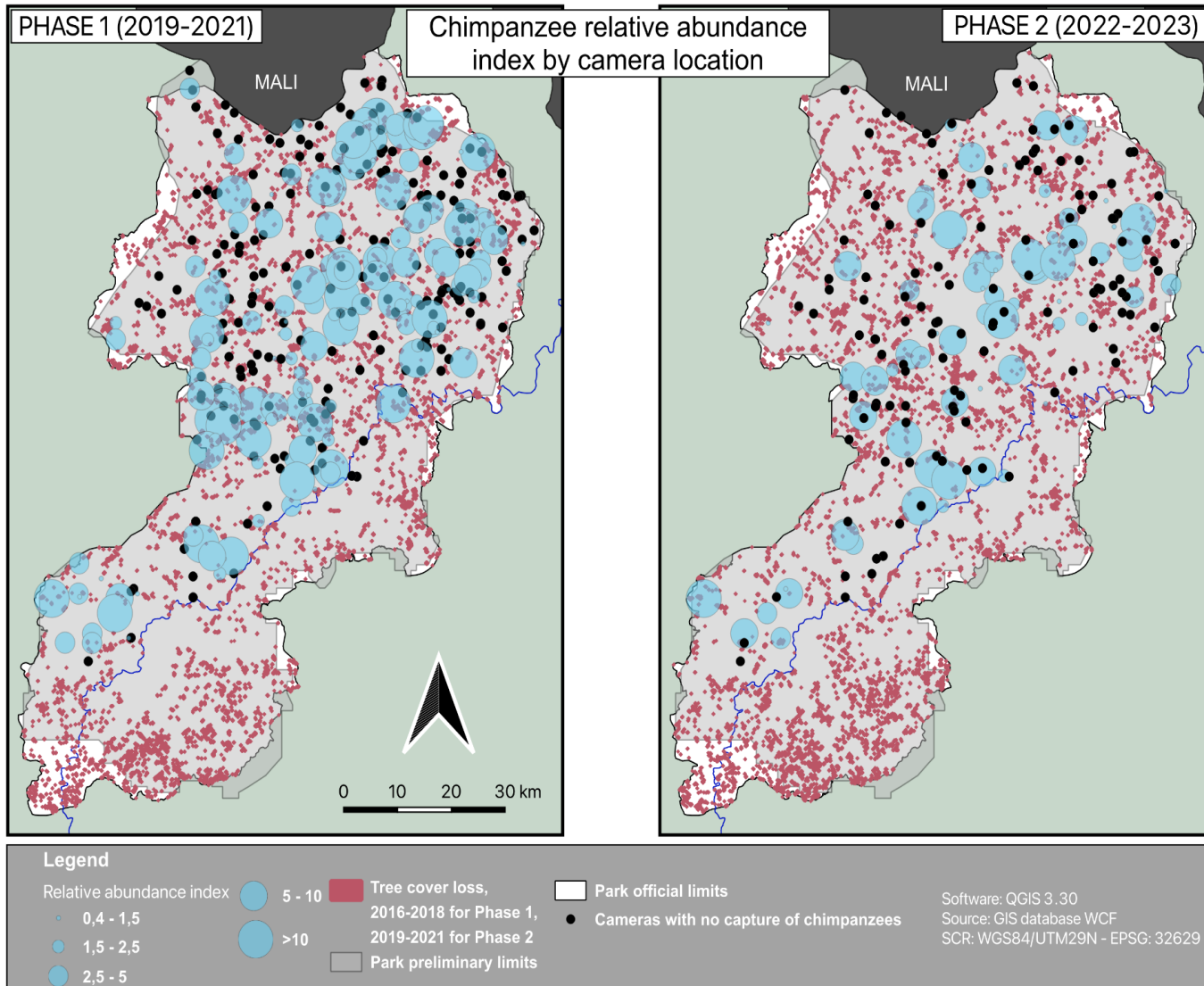


The density of the critically endangered western chimpanzee was estimated between 0.46 to 1.12 individuals/km<sup>2</sup> for phase 1 and between 0.2 and 0.61 individuals/km<sup>2</sup> for phase 2.

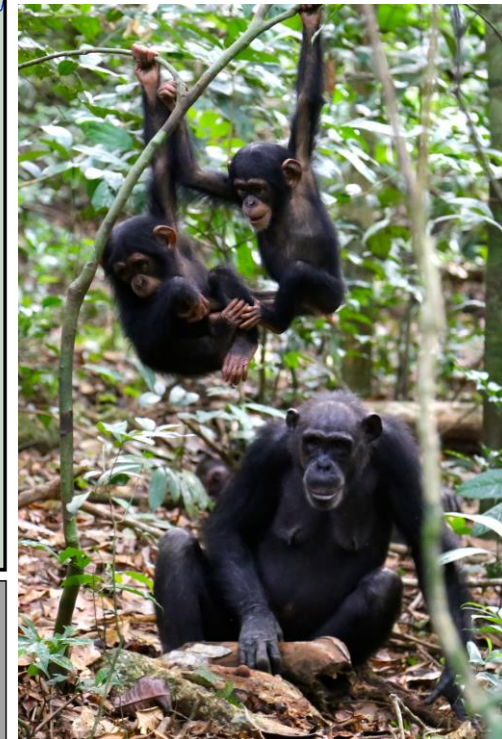




# WCF Guinea - Moyen Bafing National Park



**Relative abundance index (RAI) for western chimpanzees**  
Phase 1 = 3.739  
Phase 2 = 2.358



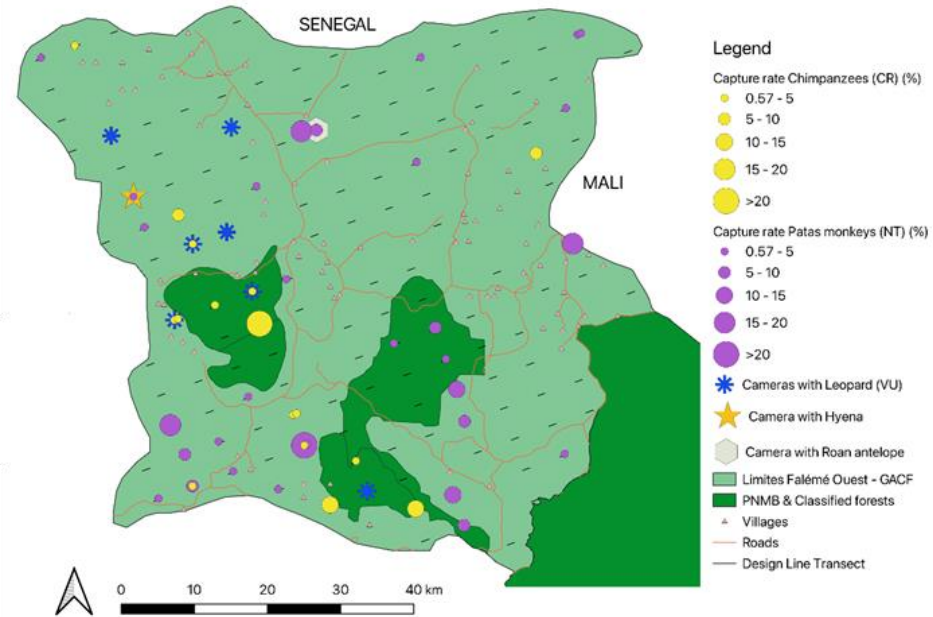
Relative abundance indices of chimpanzees by cameras in phase 1 and phase 2, with the tree cover loss of the three previous years from the start of the survey.



# WCF Guinea - corridor between Moyen-Bafing National Park and proposed Badiar National Park

## Wildlife monitoring

- a survey with line transects and camera traps has been conducted between May 2023 and July 2024, with the aim of restoring the corridor between Moyen-Bafing National Park and proposed Badiar National Park;
- estimated chimpanzee population is 673 [370-1,935] with a density of 0.140 [0.074-0.423] ind./km<sup>2</sup> and a coefficient of variation of 46%;
- chimpanzee abundances and densities are of the same order of magnitude, and the estimates fall within the confidence intervals of both methods (line transects and camera traps);
- cameras captured footages of patas monkeys, leopards, a hyena, a roan antelope among other species.



Camera locations with detections of western chimpanzees (yellow circle), patas monkeys (purple), leopard (blue), hyena (yellow star), and roan antelope (grey).





# WCF Guinea – proposed Badiar National Park

## Camera trap biomonitoring

- as part of the EU-funded NaturaGuinée project, the boundaries of the proposed Badiar National Park will be redefined;
- in May 2024, 150 camera traps were placed in an opportunistic way to have a better idea on which species are present;
- data analyses is underway, with 4,645 videos currently being processed for species identification;
- presence confirmed: African golden cat (*Profelis aurata*) and West African chimpanzee (*Pan troglodytes verus*).
- this preliminary study will allow us to elaborate a more complete biomonitoring design for Badiar.

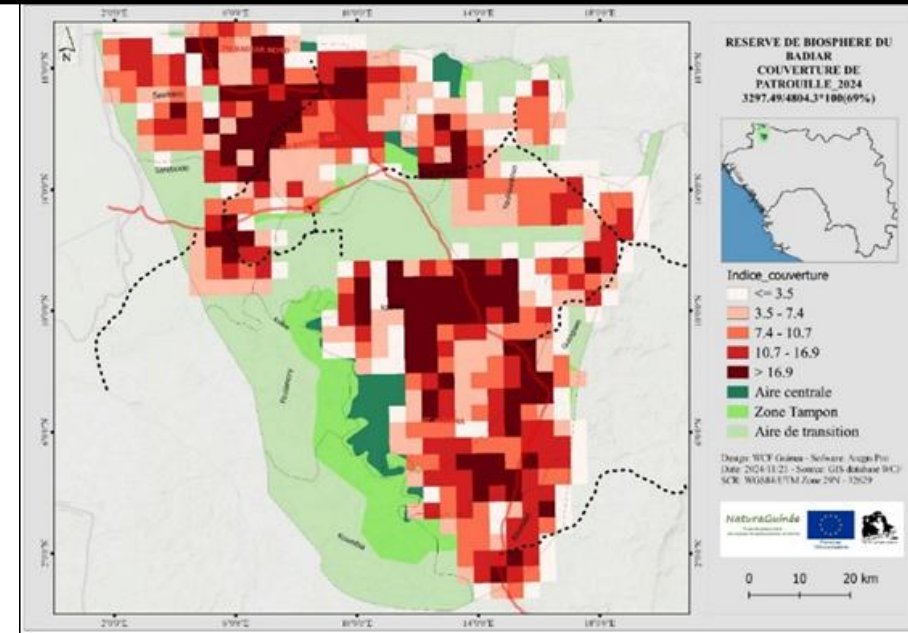




# WCF Guinea – proposed Badiar National Park

## Surveillance patrols and law enforcement

- 40 OGPNRF agents assigned to proposed Badiar National Park conducted 29 surveillance patrols in 2024, covering a total distance of 6,289.20 km, corresponding to a surface area of 69% of the reserve;
- teams observed 3,137 signs of 33 mammal species, from which 212 were direct observations, including common warthog, western chimpanzee, red-flanked duiker Guinea baboon, patas monkey and side-striped jackal;
- 1,744 signs of illegal human activities recorded, corresponding to an encounter rate of 0.28 signs/km;
- agriculture was the main threat, followed by traditional livestock farming, logging and non-timber forest product harvest.



Coverage and intensity of patrols conducted in Badiar 2024, with darker red color representing grid cells with higher patrol efforts.



# WCF Guinea – proposed Badiar National Park

## Community consultations

- in May 2024 a workshop was organized for 99 participants to present the planned project activities in Badiar to local elected officials and communities of the Koundara prefecture;
- from May to June, a community consultation was held in five rural communes, bringing together 23 district presidents, 74 sector chiefs, 59 women's representatives, and 64 youth representatives to present project activities; collect data on the communities' socioeconomic and environmental challenges, and obtain communities' agreement to deploy teams in villages.





# WCF Guinea – proposed Badiar National Park

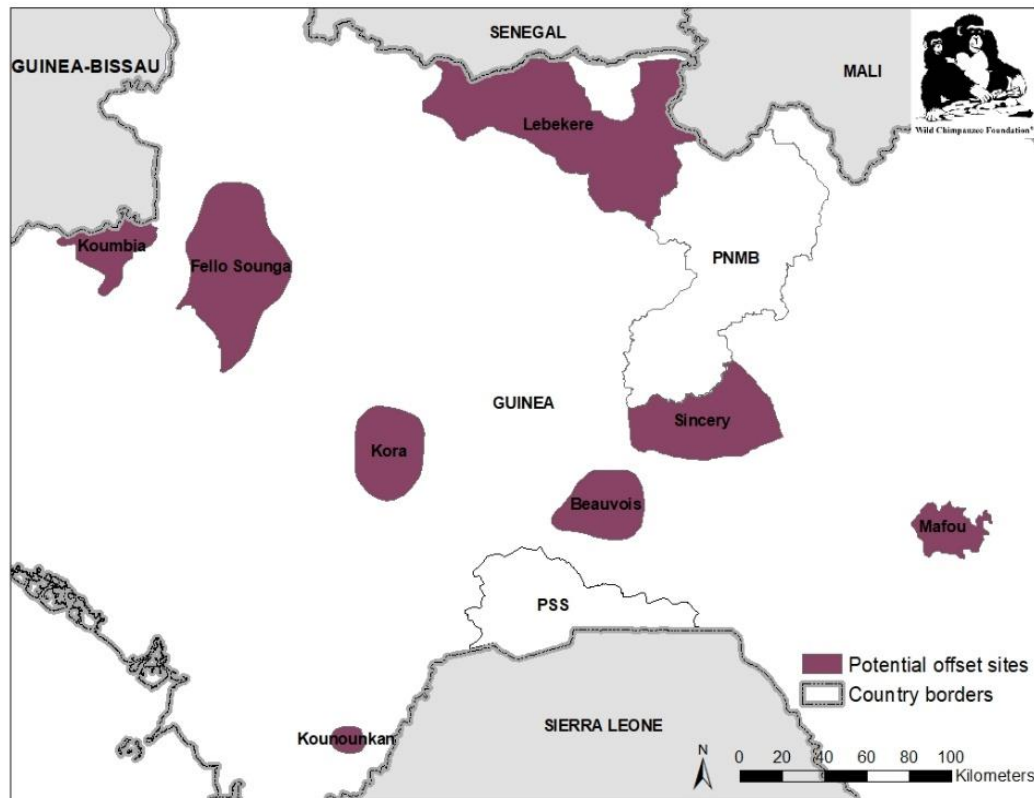
## Socioeconomic development of communities

- 21 village associations for conservation and development in 10 communities established to provide support in agriculture, apiculture, and shea butter production;
- 163 female shea butter producers from 16 villages were supported;
- they transformed their shea kernels into 1,700 kg of shea butter that will be sold.





# WCF Guinea – new chimpanzee offset project



Location of the eight potential chimpanzee offset sites where biomonitoring data collection with camera traps and line transects were completed in 2024.

## Identification of potential chimpanzee offset sites in Guinea

- the impact of the Simandou project could reach over 2'000 chimpanzees;
- several offset sites with healthy chimpanzee populations are necessary;
- funded by Rio Tinto and Winning Consortium Simandou (790,682.- USD)
- video processing for three sites is completed: Beauvois: 6,587 videos, including 37 of chimpanzees; Fello Sounga: 8,823 videos, including 101 of chimpanzees; and Sincery: 11,509 videos, including 52 of chimpanzees.
- evaluation of the best potential offset sites will be conducted and include chimpanzee abundance and density, as well as other factors such as human threats and climate change among others.





# WCF Guinea – new chimpanzee offset project

## Identification of potential chimpanzee offset sites in Guinea

**Table:** Survey summary for the eight potential chimpanzee offset sites completed, with calculated chimpanzee nest encounter rate from line transects.

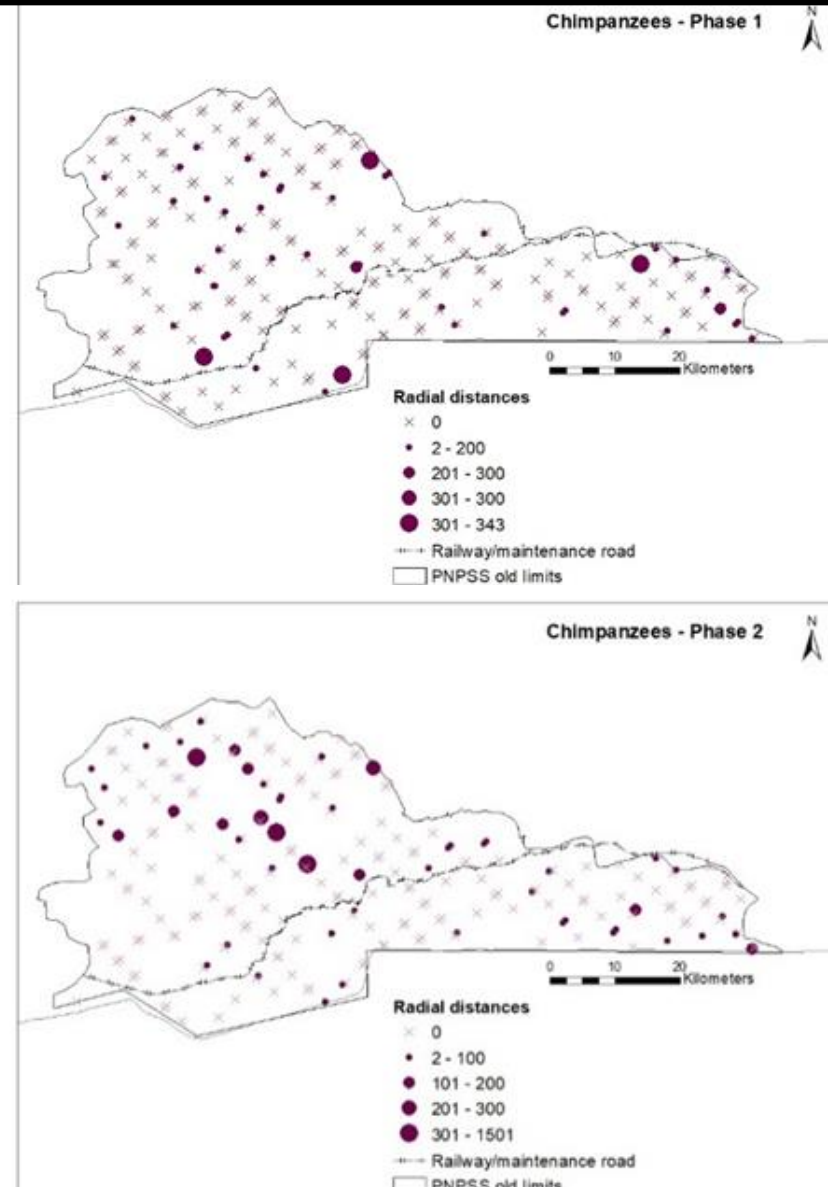
Site	Survey area	# planned transects	# realized transects	Total effort – real (km)	# planned camera traps	# deployed camera traps	# observed chimp nests	Nest encounter rate (nest/km)
Beauvois	1,077.9	36	36	69.68	93	75	169	2.43
Mafou	1,054.2	113	108	104.38	143	100	143	1.37
Sincery	2,034.1	65	62	60.99	107	90	346	5.67
Koumbia	816.5	65	65	64.08	93	78	58	0.91
Kora	1,753.0	67	64	59.99	87	66	42	0.70
Fello-Sounga	2,806.0	46	46	90.22	80	72	257	2.85
Kounounkan	594.0	92	81	70.09	165	89	31	0.44
Lébékéré	5,059.5	231	216	207.06	253	219	272	1.31



# WCF Guinea - proposed Pinselli-Soyah-Sabouyah National Park

## Line transect and camera trap distance sampling

- was launched in 2022;
- third phase began in February 2024 and is ongoing;
- 159 out of 185 transects have been completed and camera traps have been deployed at 204 out of 284 points;
- video processing is ongoing with species identification completed for 27,127 videos from 76 camera trap locations;
- chimpanzee density has been estimated from camera trap distance sampling as 0.53 [0.341-0.812] ind./km<sup>2</sup> in phase 1 and 0.47 [0.219-0.912] ind./km<sup>2</sup> in phase 2, with the estimates falling in the confidence intervals of both phases.



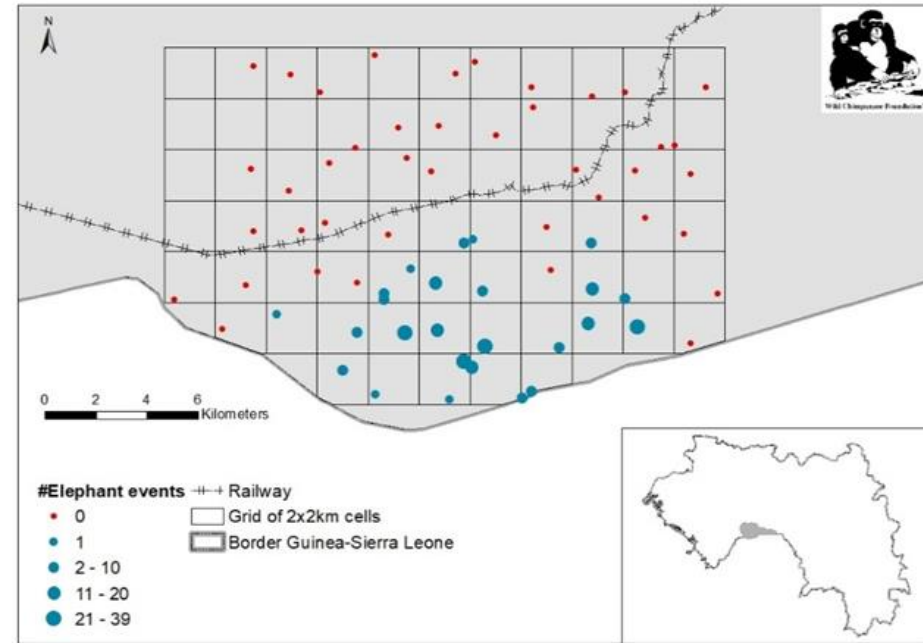
Number of chimpanzee radial distances per camera trap in phases 1 (top) & 2 (below) in proposed Pinselli-Soyah-Sabouyah National Park.



# WCF Guinea - proposed Pinselli-Soyah-Sabouyah National Park

## Elephant capture-recapture design

- since 2023, a survey focused on forest elephants using the spatial-explicit capture recapture method with camera traps;
- 2024: in addition to maintain the 62 camera traps which were set up in 2023 in Sabouyah forest in Guinea, WCF deployed 72 camera traps in the Kuru Hills-Outamba landscape in Sierra Leone;
- 663 elephant videos analyzed to date;
- 78 individual elephants have been identified in Sabouyah forest;
- on top of 11 social matriarch groups constituted of 18 adult females, 21 subadults, 16 juveniles and five infants, 18 adult males are identified as solitary or in bachelor groups.



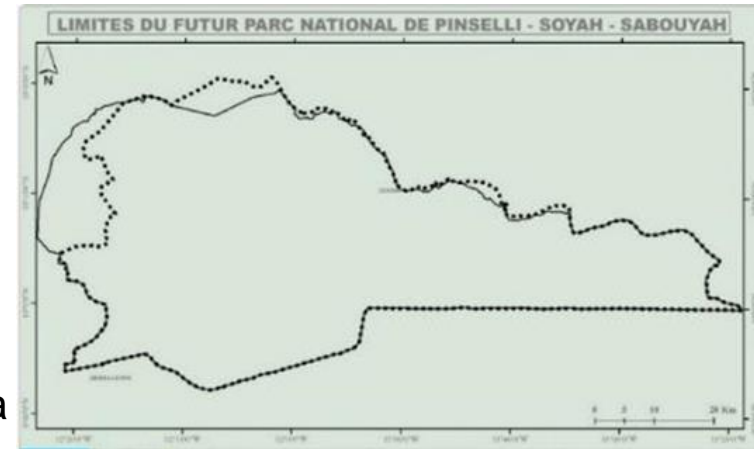
Number of elephant events captured per location from February 2023 to July 2024 in Sabouyah forest. The size of the blue circle represents the number of forest elephant videos recorded at that location.



# WCF Guinea - proposed Pinselli-Soyah-Sabouyah National Park

## Gazettement process

- late last year, and following the third consultation meetings in the communes of the proposed park, the parks boundary was revised in line with community requests;
- on January 17, 2024, *Ministère de l'Environnement et du Développement Durable*, *Office Guinéen des Parcs Nationaux et Réserves de Faune* and WCF organized a workshop in Conakry to validate the park's boundary with local communities through the signature of agreements;
- 70 participants, including the prefects of Kindia, Mamou, and Faranah, mayors, vice-mayors, sub-prefects of the six communes of the park, local, regional, and national authorities from *Ministère de l'Environnement et du Développement Durable*;
- the ministerial decree establishing the gazettement process of Pinselli-Soyah-Sabouyah National Park and the minutes of the validation of the park's boundary in the six communes were presented;
- the park includes six communes: Madina Oula, Soyah, Ouré Kaba, Maréla, Linsan, and Konkouré, and a total provisional size of 3,156 km<sup>2</sup> (compared to 3,029 km<sup>2</sup> previously).



Old (dotted) and updated (continuous) limits of Pinselli-Soyah-Sabouyah National Park's boundary (right).





# WCF Guinea – proposed Pinselli-Soyah-Sabouyah National Park

## Wildfire management



Location 98 km of fire belts (in red) to protect high conservation value forests (in green).

- 98.22 km of fire belts were established around high conservation value forests (+36% compared to last fire season) with the involvement of 840 community members (+28%), including 156 women;
- resulting in the protection of 92% of gallery and open forests;
- awareness-raising sessions on wildfire management were conducted in 89 villages with 1,034 participants, including 295 women.





# WCF Guinea – proposed Pinselli-Soyah-Sabouyah National Park

## Natural Ecological Regeneration (NER)

- in January, capacity-building of 60 community members was organized;
- 609.90 ha of land have been identified for restoration across 11 NER sites, with 78 ha already benefiting from NER efforts in 2024;
- 422 community members, including 84 women, participated in the establishment of 18 growth-monitoring plots, which resulted in the inventory of 1,144 plants from 48 species.





# WCF Guinea – proposed Pinselli-Soyah-Sabouyah National Park

## Socioeconomic development of communities

- 803 community members (including 396 women), were organized into 25 village associations for conservation and development;
- to improve their livelihoods in various sectors such as vegetable gardening, rainfed agriculture, apiculture production, fish farming, pastoralism and livestock program.





# WCF Guinea – proposed Pinselli-Soyah-Sabouyah National Park



## Improved cookstoves

- in May, 62 community members, including 37 women, from 13 pilot communities and 25 WCF staff were trained in Soyah to optimize energy use for cooking and reduce wood exploitation;
- stoves are constructed from locally sourced materials (dung, clay, straw, and water) and reduce the use of wood by 80%;
- 215 women in 25 villages fabricated 284 improved cookstoves so far.



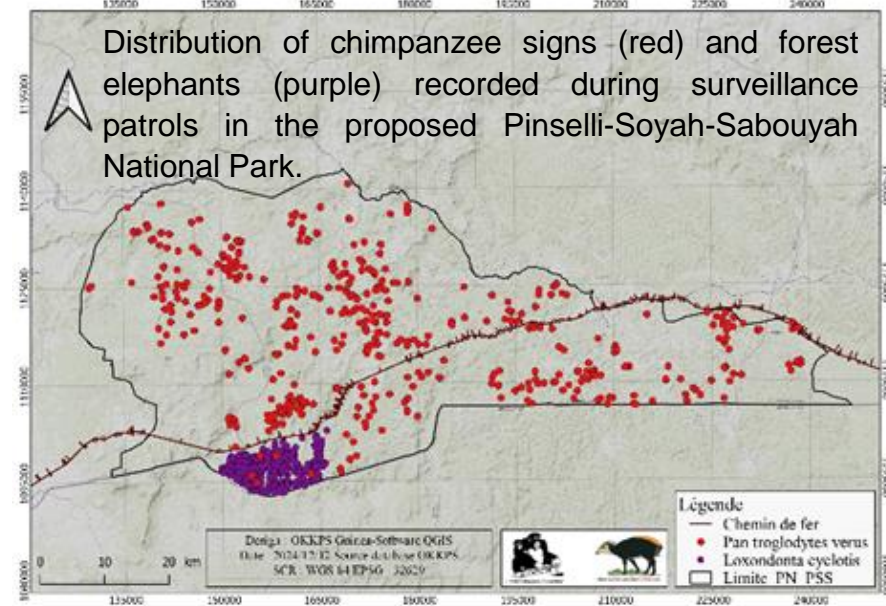


# WCF Guinea - OKKPSS Landscape

## Outamba-Kilimi-Kuru Hills-Pinselli-Soyah-Sabouyah

### Surveillance patrols and law enforcement

- Guinea: community ecoguard teams at the proposed Pinselli-Soyah-Sabouyah National Park, comprising 67 community members, 23 interns, and 12 Office Guinéen des Parcs Nationaux et Réserves de Faune (OGPNRF) agents, conducted 75 surveillance patrols, covering a total distance of 10,708.44 km and corresponding to a surface area of 84% of the future park.
- Sierra Leone: two cross-border law enforcement patrols (July and October) were conducted at the border between Guinea and Sierra Leone by OGPNRF and National Protected Area Authority, and resulted in the arrest of three individuals and the seizure of two chainsaws and 567 units of timber.



## WCF Guinea – Capacity building



In 2024, WCF has conducted **six capacity-building workshops**:

- in February, a training on patrolling techniques was organized in Koundara for 40 OGP/NRF agents assigned to Badiar Biosphere Reserve;
- in April, a training course on cartography and QFIELD application was provided to 14 Brigade officers and five WCF staff in Conakry;
- in May, a biomonitoring training was organized in Koundara for 35 OGP/NRF agents and 17 WCF staff;
- in June, a law enforcement and wildlife criminality capacity-building workshop was organized in Kindia for 58 participants from *Ministère de l'Environnement et du Développement Durable*, Magistracy, Customs, Police, Interpol, national agency for the fight against corruption and promotion of good governance, *Office Guinéen des Parcs Nationaux et Réserves de Faune*;
- in August, the management efficiency of Badiar National Park was evaluated with 27 participants for the first time using Integrated Management Effectiveness Tool in Mamou;
- two training sessions, on georeferenced data acquisition techniques and cartographic analysis, were held in October and November for 12 agents from the Guinean Agency for Environmental Assessment (AGEE).



# WCF Guinea – Awareness raising and environmental education

## Proposed Pinselli-Soyah-Sabouyah National Park:

- through the organization of “cercles d’écoute” and cinema mobile, 7,720 community members (including 3,882 women) were sensitized;
- Club P.A.N. was implemented in six schools for 300 children, including 97 girls, during the 2023-2024 school year;
- a theatre tour was organized in 19 communities that reached 1,376 people, including 710 women;
- International Women’s Day was celebrated in Mamou on March 8, through a march, a play, and speeches by authorities with more than 500 participants;

## Proposed Badiar National Park:

- through the organization of “cercles d’écoute” and cinema mobile, 3,468 community members (including 1,379 women) were sensitized;
- Club P.A.N. 2024-2025 started in November 2024 with 6 schools and 304 children;

**World Chimpanzee Day was celebrated in Mamou, Koundara, and Conakry** on July 14, through a march to raise awareness on the importance to protect chimpanzees.





# WCF Côte d'Ivoire



67 persons:

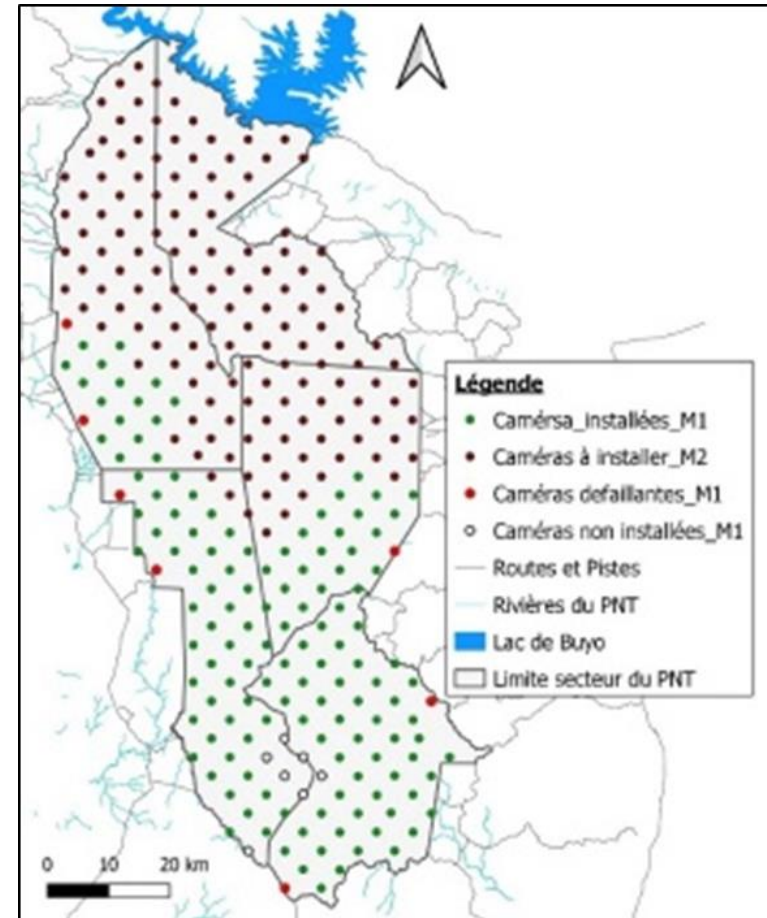
- eight expatriates including five volunteers;
- four administrative staff;
- four program managers (Biomonitoring Cavally, Ecotourisme Taï, Biomonitoring Taï National Park and Independent monitoring);
- 17 ecoguards and one supervisor;
- 26 ecoguides, drivers, supervisors, and staff for ecotourism in Taï;
- six video analysts;
- one driver and one cleaner in Abidjan.





# WCF Côte d'Ivoire – Biomonitoring in Taï National Park

- in August and November 2024, WCF supervised the data collection for the third Camera Trap Distance Sampling (CTDS) phase in Taï National Park which is ongoing;
- 20 teams consisting of *Office Ivoirien des Parcs et Réserves* and WCF agents placed 150 cameras;
- the biomonitoring report of the first two phases of CTDS in Taï National Park was finalized in 2024 and shared with *Office Ivoirien des Parcs et Réserves*;



Design of third phase of Camera Trap Distance Sampling in Taï National Park, with cameras successfully installed during the first mission in green, those with technical issues in red, those that could not be installed during the first mission in white, and cameras that were planned to be installed during the second mission in brown.

## WCF Côte d'Ivoire – Community ecoguards in Taï National Park



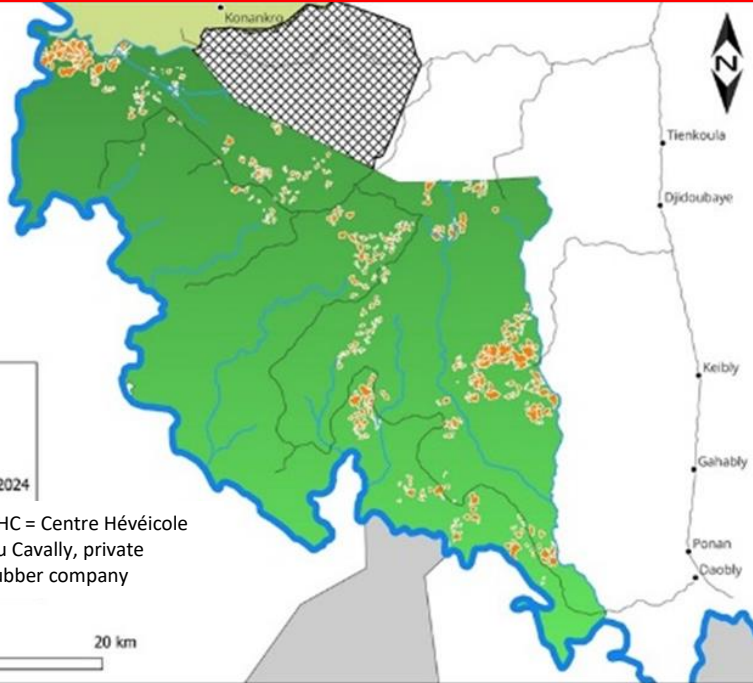
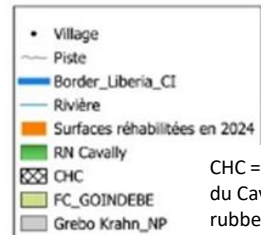
- in 2024, the community ecoguard team and the Taï Chimpanzee Project anti-poaching team continued to patrol the 500 km<sup>2</sup> research and ecotourism area of Taï National Park;
- covering a total distance of 344.6 km: 228.0 km on line transects and 116.6 km on reconnaissance walks (recce).
- direct and indirect indices of 23 different species were recorded.

Table: Encounter rates (signs/km) of three species, monkeys, and illegal human activities per method during the 17th biomonitoring phase (October 2023 – December 2024).

Category	Encounter rates (signs/km)		
	<i>Recce</i>	<i>Line transect</i>	<i>Total</i>
Western chimpanzees	0.20	0.30	<b>0.27</b>
Monkey species	7.39	6.40	<b>6.78</b>
Forest elephants	0.32	0.24	<b>0.27</b>
Pygmy hippopotamus	0.15	0.10	<b>0.11</b>
Illegal activities	0.78	0.61	<b>0.66</b>

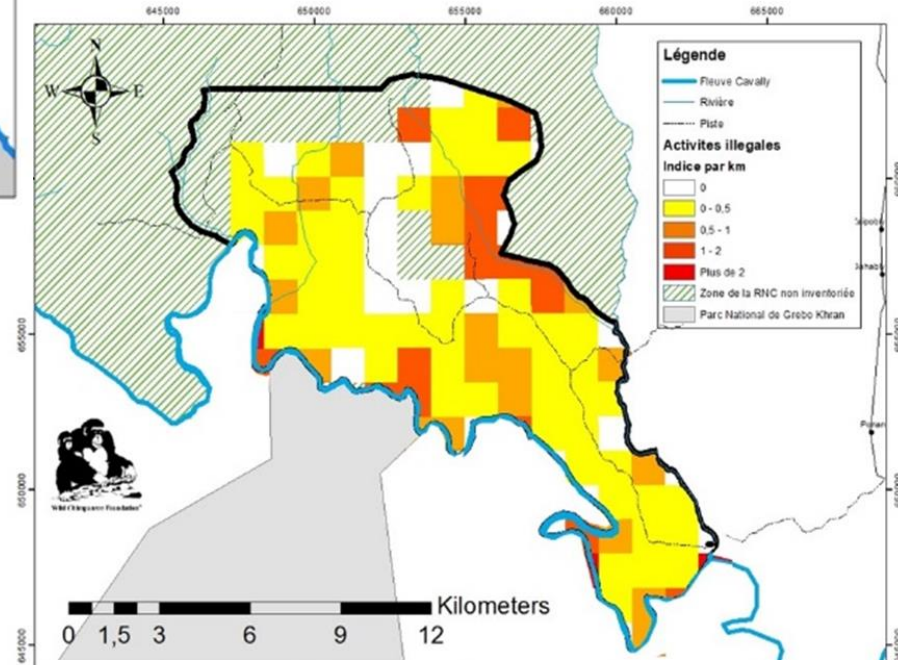


# WCF Côte d'Ivoire – Community ecoguards in Cavally Nature Reserve



- in September 2023, Cavally Classified Forest was upgraded to Cavally Nature Reserve;
- community ecoguards in collaboration with *Office Ivoirien des Parcs et Réserves*, conducted 12 surveillance patrols in the reserve in 2024 to combat deforestation;
- 3,016 ha of forest were rehabilitated in 2024 by *Office Ivoirien des Parcs et Réserves*.

Areas rehabilitated in 2024 by *Office Ivoirien des Parcs et Réserves* in orange.



Distribution of illegal activities (without illegal agricultural activities), mainly poaching in the southern zone of Cavally Nature Reserve.



# WCF Côte d'Ivoire – Independent monitoring of Cavally Nature Reserve

- since September 2023, Cavally Nature Reserve is managed by *Office Ivoirien des Parcs et Réserves* they demonstrated greater responsiveness and availability to support NOFNA's independent observers;
- sadly, observers report an increase in deforestation in Cavally Nature Reserve;
- in 2024, legal analysis memos were developed and discussed to assist authorities and independent observers in enhancing forest governance:
  1. A memo on the protection of independent observers;
  2. A memo on publication of judicial decisions;
  3. A memo on cross-border trafficking between Liberia and Côte d'Ivoire.



## OBSERVATION INDEPENDANTE

Cas de recel de cacao en provenance de  
forêts classées



JUIN 2023





# WCF Côte d'Ivoire – Theater tour around Cavally Nature Reserve



New play developed in collaboration with Alma Production due to the increase in deforestation.



The theater debate provided the opportunity to reward Mr. Fidèle Tere, President of the NGO *Notre Forêt Notre Avenir* (NOFNA) and Jean-Marc Lessiehi, one of Cavally's first community ecoguards.

The play reached ~4,000 people, local and national authorities, including the highest authorities: Madame Anne Désirée Ouloto, Minister of State and Minister for the Civil Service and Modernization of Administration, as well as the President of the Cavally Regional Council, who sponsored the theater debate in Abidjan.





## Ecotourism in numbers for 2024

232 tourists

- ➔ 35,288,500FCFA (~53,797€);
- ➔ 391 bed/nights;
- ➔ 93% tourist satisfaction.

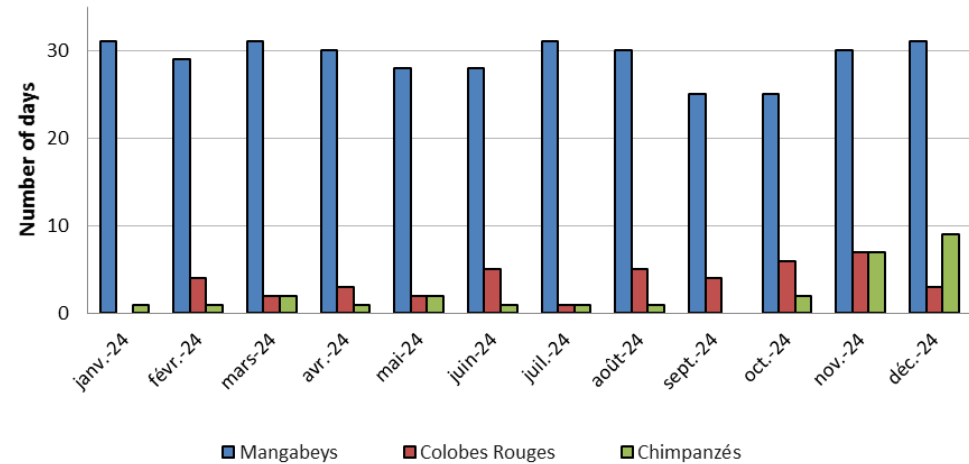




# WCF Côte d'Ivoire – Ecotourism Taï

## Primate habituation for ecotourism

- **mangabeys** are fully habituated and were monitored for ~29 days each month;
- **red colobus monkeys** are habituated as well and were followed for an average of three to four days per month;
- **chimpanzee** habituation is ongoing and three ecoguides were recruited in October 2024 to better track the chimpanzee group.



Number of days the different primate groups were followed in 2024, with mangabeys in blue, red colobus in red, and western chimpanzees in green.





# WCF Côte d'Ivoire – Ecotourism Taï

Ecotourism project benefits communities through:

## 1. Regular income

- 26 employees in the ecotourism project;
- 25 direct beneficiaries of ecotourism initiatives (50% are women), art & crafts, beekeeping, cocoa products, permaculture, fabric creations;
- a variety of local products are sold at the ecomuseum, including loincloth bags with *Institut de Formation et d'Education Féminine* and chocolate products crafted by Rachelle Gehi of Gouleako;

## 2. Environmental education and awareness raising at Taï Ecomuseum

- 168 children joined the animation and awareness program in 2024.



Durable concrete bee-hives were constructed in 2024.





# WCF Liberia



- 3 offices: Monrovia, Zwedru, Sapo National Park;
- 44 staff members, including 5 expats;
- 296 community ecoguards/ecoguides/team leaders/auxiliaries/school wildlife club facilitators;
- 40 biomonitors.





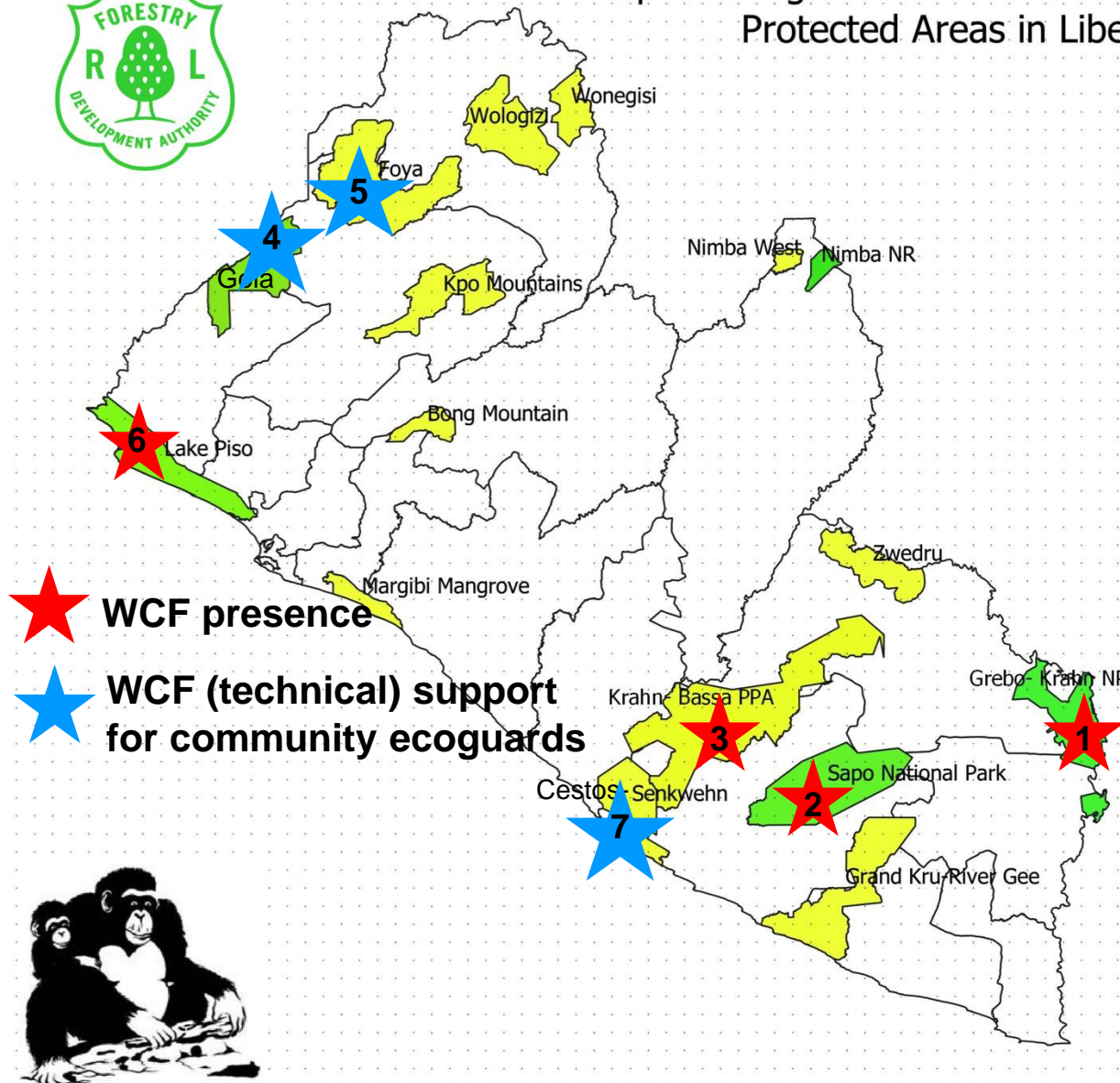
# WCF Liberia - Locations of the WCF activities



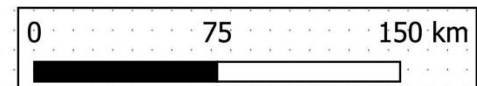
Map showing Protected Areas and Proposed Protected Areas in Liberia

Protected Area

Proposed Protected Area (PPA)



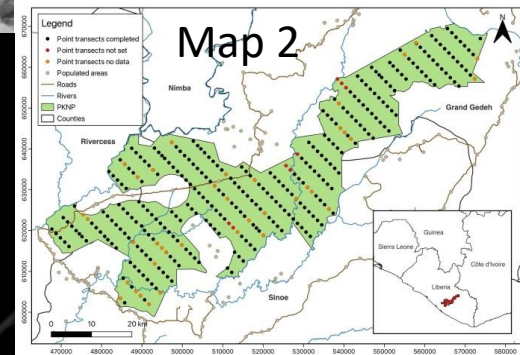
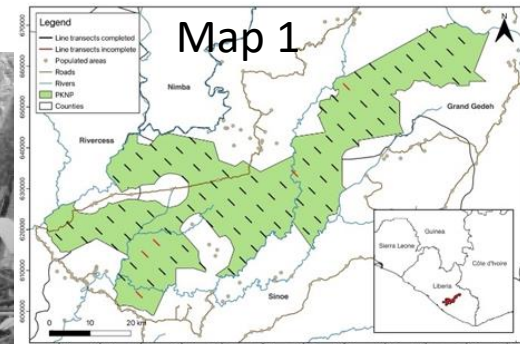
- 1) Grebo-Krahn National Park - GKNP
- 2) Sapo National Park - SNP
- 3) Proposed Kwa National Park - PKNP
- 4) Gola Forest National Park - GFNP
- 5) Foya Proposed Protected Area - FPPA
- 6) Lake Piso Multiple Sustainable Use Reserve – LPSMUR
- 7) Cestos-Senkwehn Proposed Protected Area - CSPPA





# WCF Liberia – Biomonitoring in Proposed Kwa National Park

- 10-month survey from 2023 - September 2024;
- eight teams with 32 community members, six interns, four FDA rangers and WCF team leaders;
- 88 line transects (Map 1) were surveyed, and 339 camera trap deployment points (Map 2) were completed, with a total distance covered of 348.6 km;
- preliminary results from line transects suggest a significant decrease in western chimpanzee (by 43%) when comparing the encounter rates of the same line transects surveyed in 2017 and 2024;
- this worrying result is due to high poaching pressure and the fact that the area of the park was significantly reduced by FDA after the consent forms for the park creation had been signed and the gazettelement package was drafted, and that two of the most important High Conservation Value Areas were excluded.

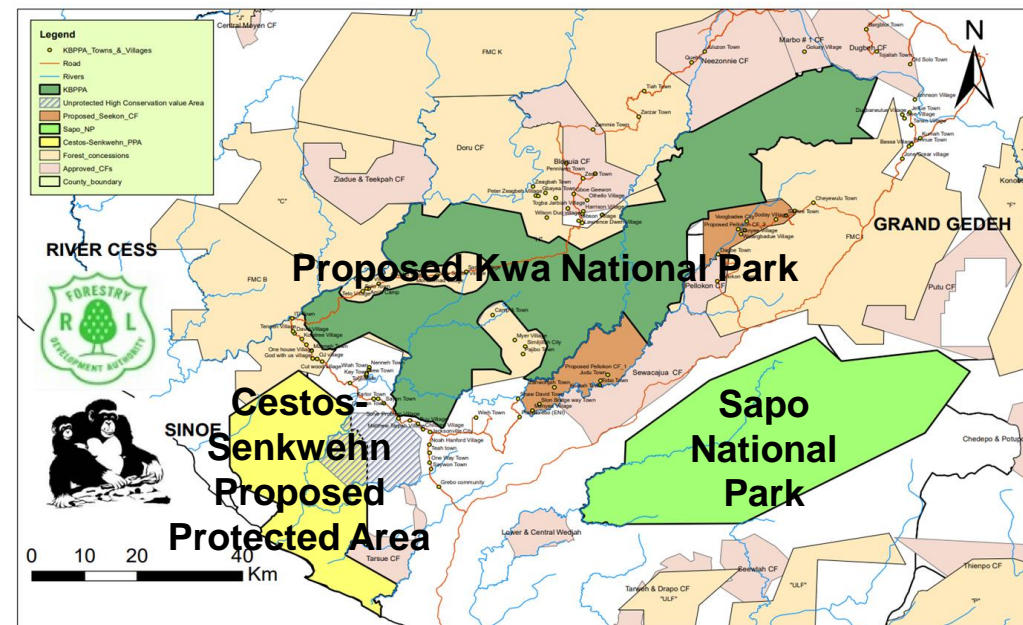




**WCF Liberia - Gazettement for Kwa National Park**



- due to the political transition in Liberia, the gazettelement process of Proposed Kwa National Park was put on hold by FDA in 2024,
- the Ministry of Mines and Energy has handed out exploration licenses within the park, even though they also signed the consent forms for the creation of the park and were fully part of the pre-gazettelement activities;
- by mid-2024, the Customary Land Formalization (CLF) which partly should have been completed prior to gazettelement only showed slow progress;
- finally, WCF was asked to step in to support the completion of the CLF process;
- since September 2024, WCF has worked with the Liberia Land Authority to complete the CLF, which is expected for the first half of 2025.





## WCF Liberia - Community Ecoguard Program (local and national)

46 ecoguard teams with 194 community ecoguards and 38 team leaders patrolled at seven protected areas in Liberia:

- eight teams in Grebo-Krahn National Park (32 community members, including 15 women),
- 10 teams in Proposed Kwa National Park (40 community members, including 15 women),
- three teams in tourism zone of Sapo National Park (22 community members);
- on the national level, WCF, in close collaboration with Forestry Development Authority, Society for the Conservation of Nature of Liberia, Nature Compact and Royal Society for the Protection of Birds continued to support community ecoguards at Lake Piso Sustainable Multiple Use Reserve (five teams, 20 ecoguards, including 13 women), Gola Forest National Park (ten teams, 40 ecoguards, including 10 women), Foya Proposed Protected Area (five teams, 20 ecoguards, including 10 women) and Cestos-Senkwehn Proposed Protected Area (five teams, 20 ecoguards, including 4 women).

WCF gives support for the national SMART database.

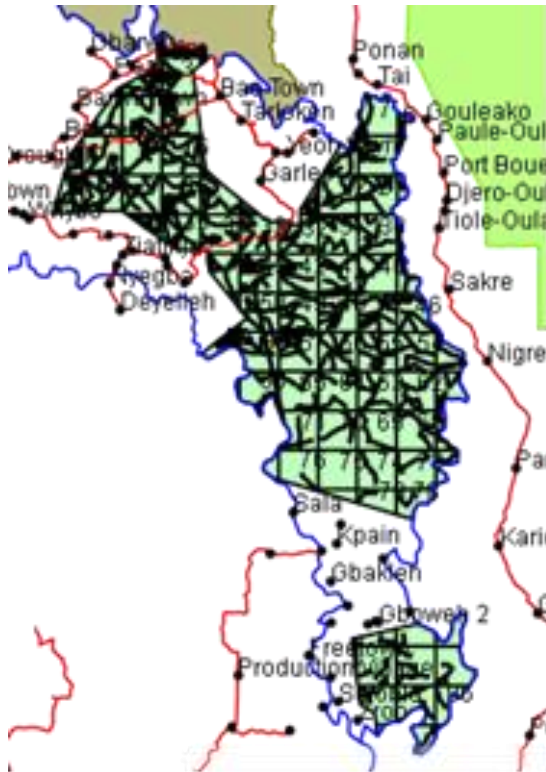




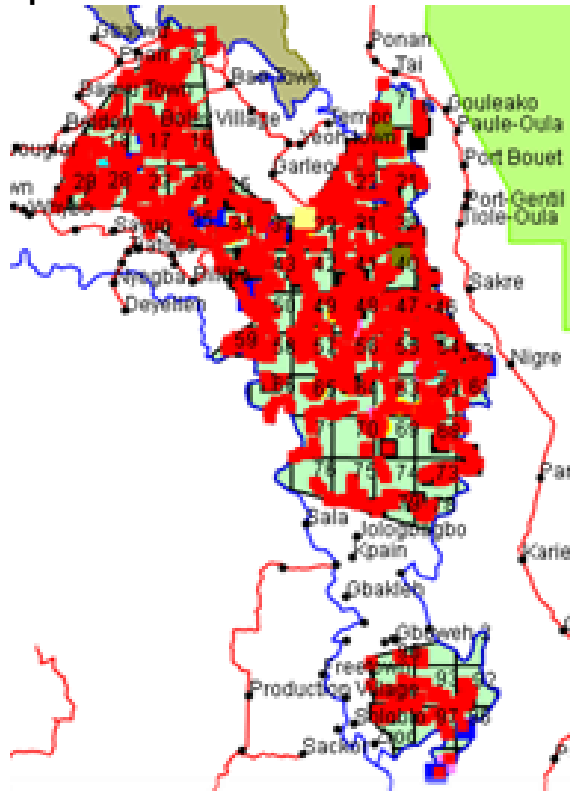
# WCF Liberia - Community Ecoguard Program in Grebo-Krahn National Park

**January to December 2024**

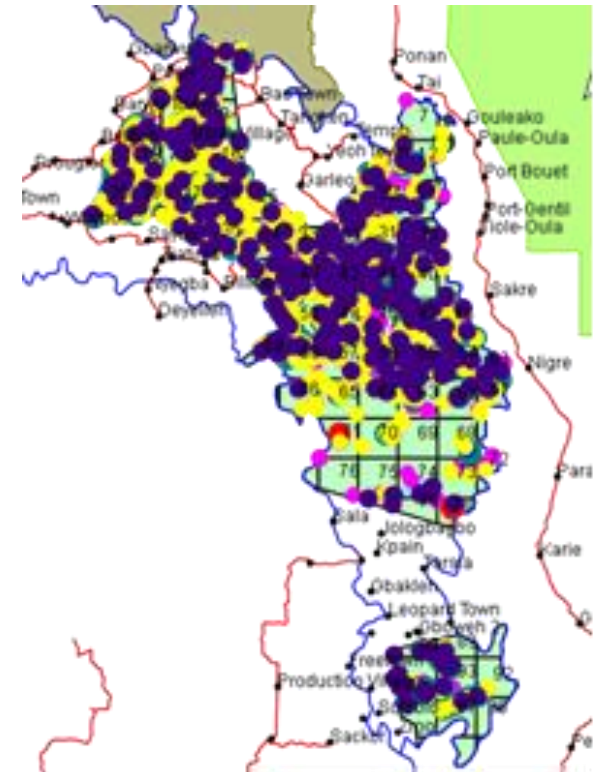
Patrol coverage (black lines) by ecoguards



Illegal human activities in red, observed by ecoguards all over the park



Wildlife observations (colored dots) by ecoguards



SMART data collected by community ecoguards.



# WCF Liberia - Community Ecoguard Program in Grebo-Krahn National Park



## Auxiliary program to support Forestry Development Authority law enforcement

- 12 auxiliaries and six Forestry Development Authority (FDA) rangers and zone wardens conducted six law enforcement patrols;
- plus two ten-day joint security patrols with FDA, police, and immigration officers patrolling under the direction of the FDA Forest Law Enforcement Division, including members of the Wildlife Crime Task Force;
- resulted in the arrest, prosecution, and conviction of six poachers, marking the first successful prosecutions and convictions in Grebo-Krahn's history.



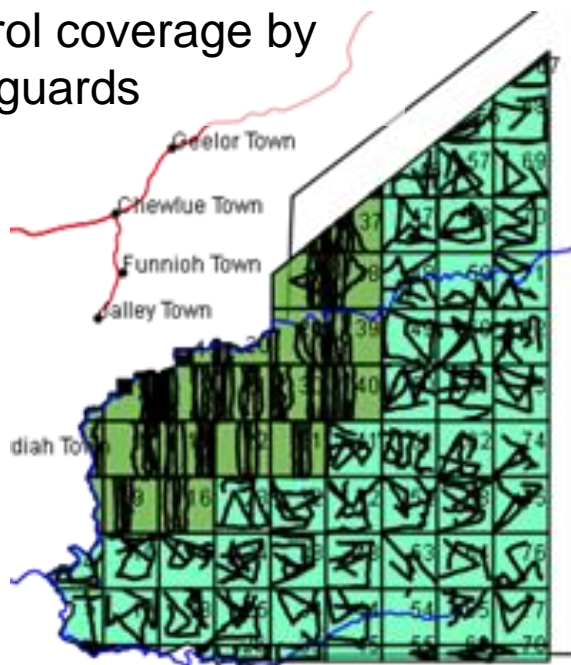


## WCF Liberia - Community Ecoguard Program in ecotourism zone of Sapo National Park

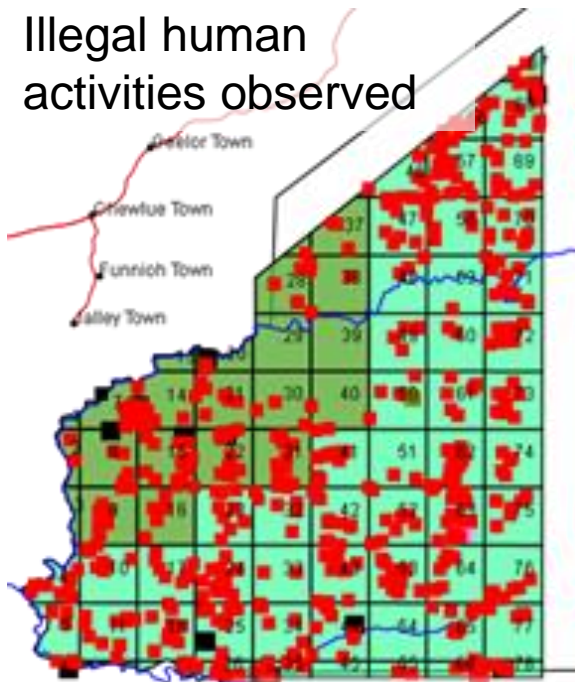
**24 patrols with 193 patrol days in 2024** to ensure a safe tourism zone by four ecoguard / ecoguide teams:

- total distance covered: 707.25 km (black lines in left map below);
- number of illegal human activities observed: 658 signs (red dots in middle map below), with an encounter rate of 0.93 signs/km, and 0.92 signs of hunting per km;
- number of wildlife observations: 4,806 signs (colored dots in right map below), with an encounter rate of 6.80 signs/km.

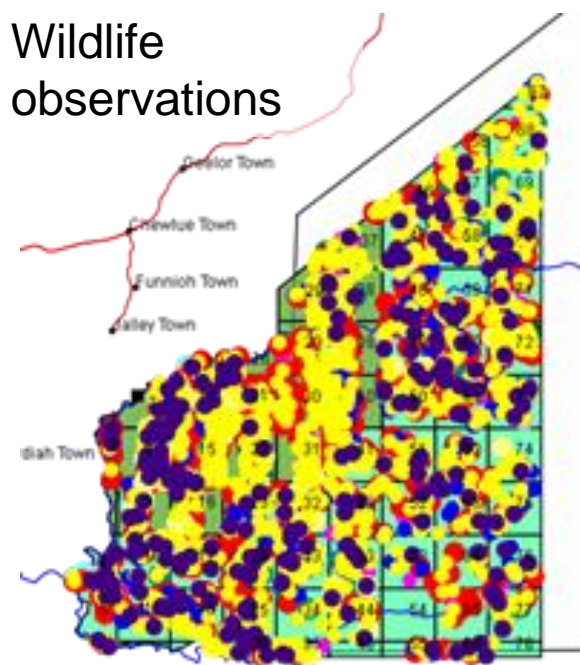
Patrol coverage by  
ecoguards



Illegal human  
activities observed



Wildlife  
observations



SMART data collected by community ecoguards.



## WCF Liberia – National Wildlife Crime Task Force



- increased awareness, training and collaboration with the judiciary have led to an unprecedented success in combating wildlife crime in Liberia's history with 21 confiscations of wildlife and wildlife products automatically accompanied by arrests, followed by prosecution and potential conviction, with fines up to US\$ 900 and 6 months in prison.





# WCF Liberia - Community Volunteer Program - female bushmeat sellers



- nationwide community volunteer program led by Forestry Development Authority in collaboration with the Liberia Marketing Association targeting 350 female bushmeat sellers in ten major bushmeat hubs across Liberia;
- these women were trained in wildlife law, protected species, zoonotic diseases, general conservation principles and communication methods;
- they are raising awareness at markets and are educating other bushmeat traders, restaurant owners and customers, while changing to legal businesses;
- out of the 350 women, 320 successfully conducted awareness and changed from selling bushmeat to legal, sustainable businesses;





# WCF Liberia – Sapo Ecolodge in Sapo National Park



- community-based ecotourism project;
- co-management and livelihood support for six security guards and five cooks/cleaners, including seven women;
- 30 tourists stayed at Sapo Ecolodge in 2024;
- ten women are trained and organized in the Sapo Woman Conservation Enterprise for beekeeping and vegetable gardening;
- Sapo Women Conservation Enterprise developed the Sapo Natural Forest Honey, selling a 400g honey pot for \$10.



## WCF Liberia - Community livelihood support



- ongoing support for beekeeping activities in Sapo, Grebo-Krahn and Proposed Kwa National Park in 2024;
- 196 new beekeepers, including 86 women, were trained and supported in the provision of 529 new beehives, of which 272 have already been colonized by bees in 2024.





# WCF Liberia - Community engagement & awareness



© PKNP Wildlife Club Students



© PKNP Wildlife Club Students

- Wildlife clubs in 40 schools, 800 children;
- World Wildlife Day was celebrated in March, World Environment Day in June, and World Chimpanzee Day in July 2024;
- April and May, WCF, in collaboration with Eddie Theater Production conducted a theater tour in 19 communities around Proposed Kwa National Park, 3,476 persons were reached, including 1,437 women, 1,288 men, and 751 children.





Thank you!





Grants and partners:



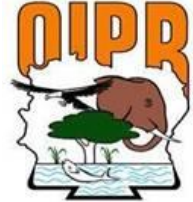
Rettet den Regenwald e.V.



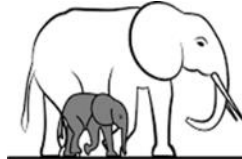
the Jane Goodall Institute



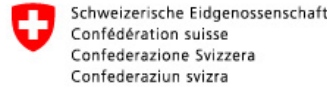
USAID FROM THE AMERICAN PEOPLE



Liberia Forest Sector Project



Elephant Research and Conservation



Zoo am Meer Bremerhaven GmbH



CRITICAL

ECOSYSTEM PARTNERSHIP FUND

