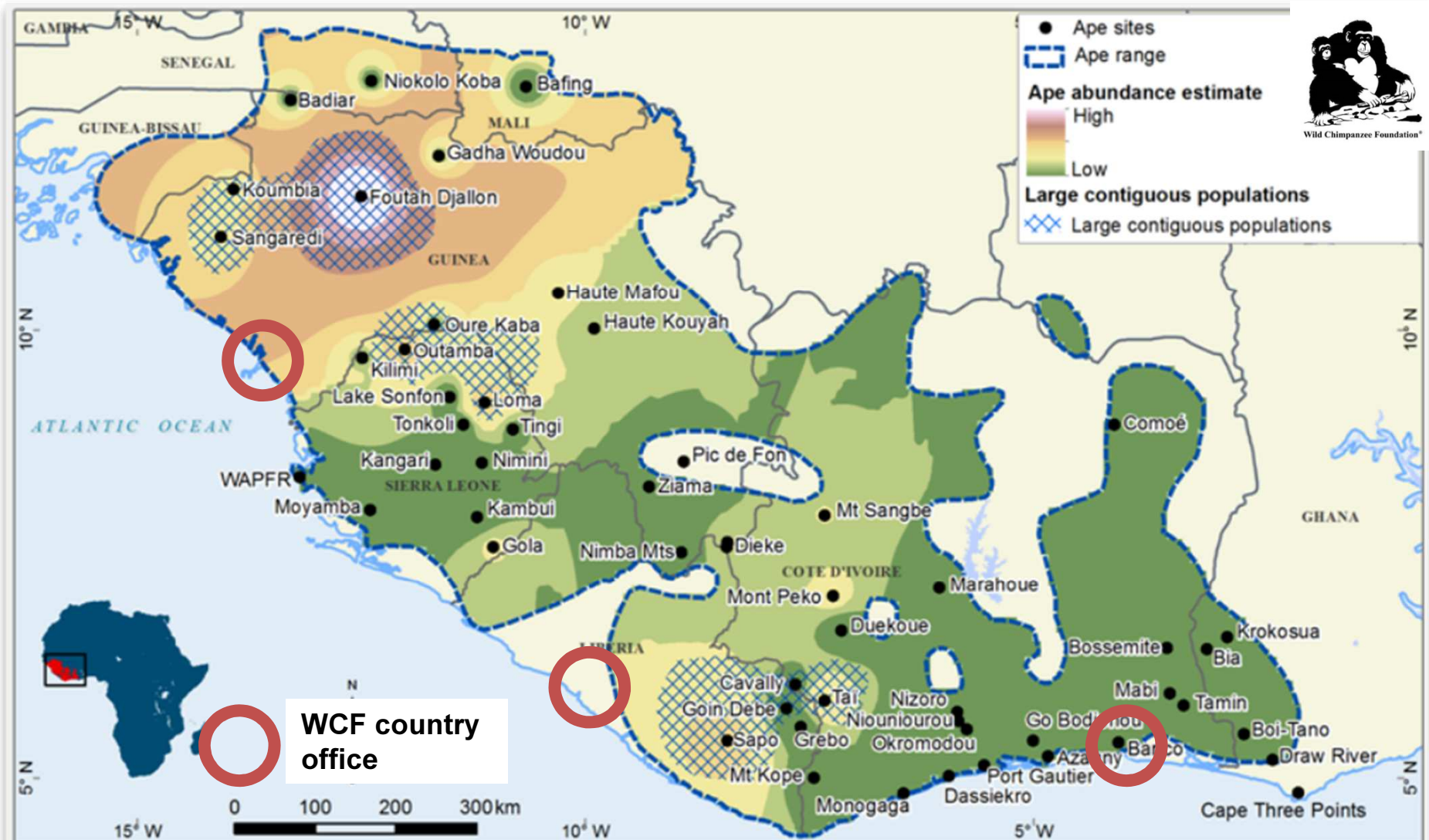


Yearly report 2019

www.wildchimps.org

Distribution and density of chimpanzees in West Africa



WCF Côte d'Ivoire



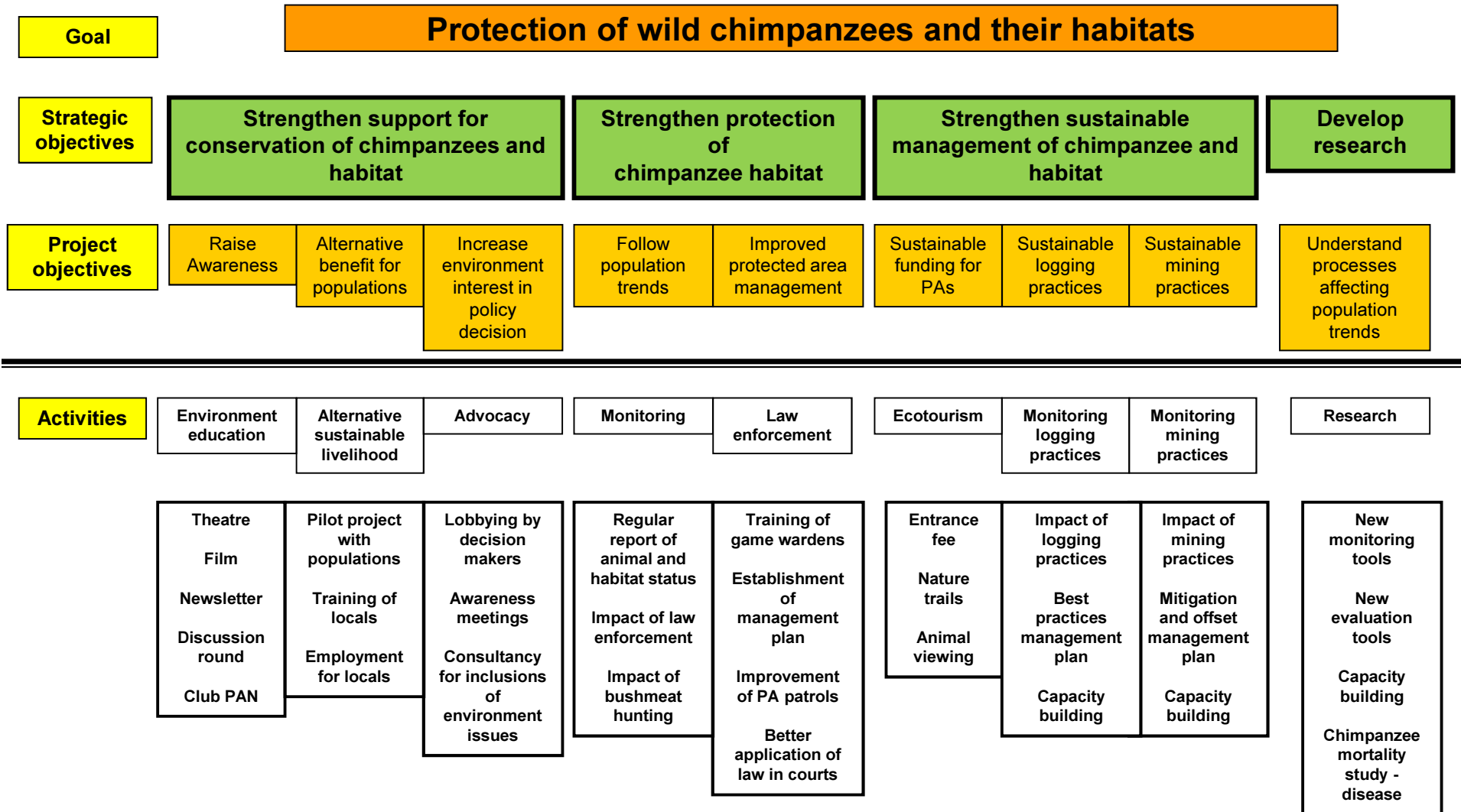
WCF Liberia



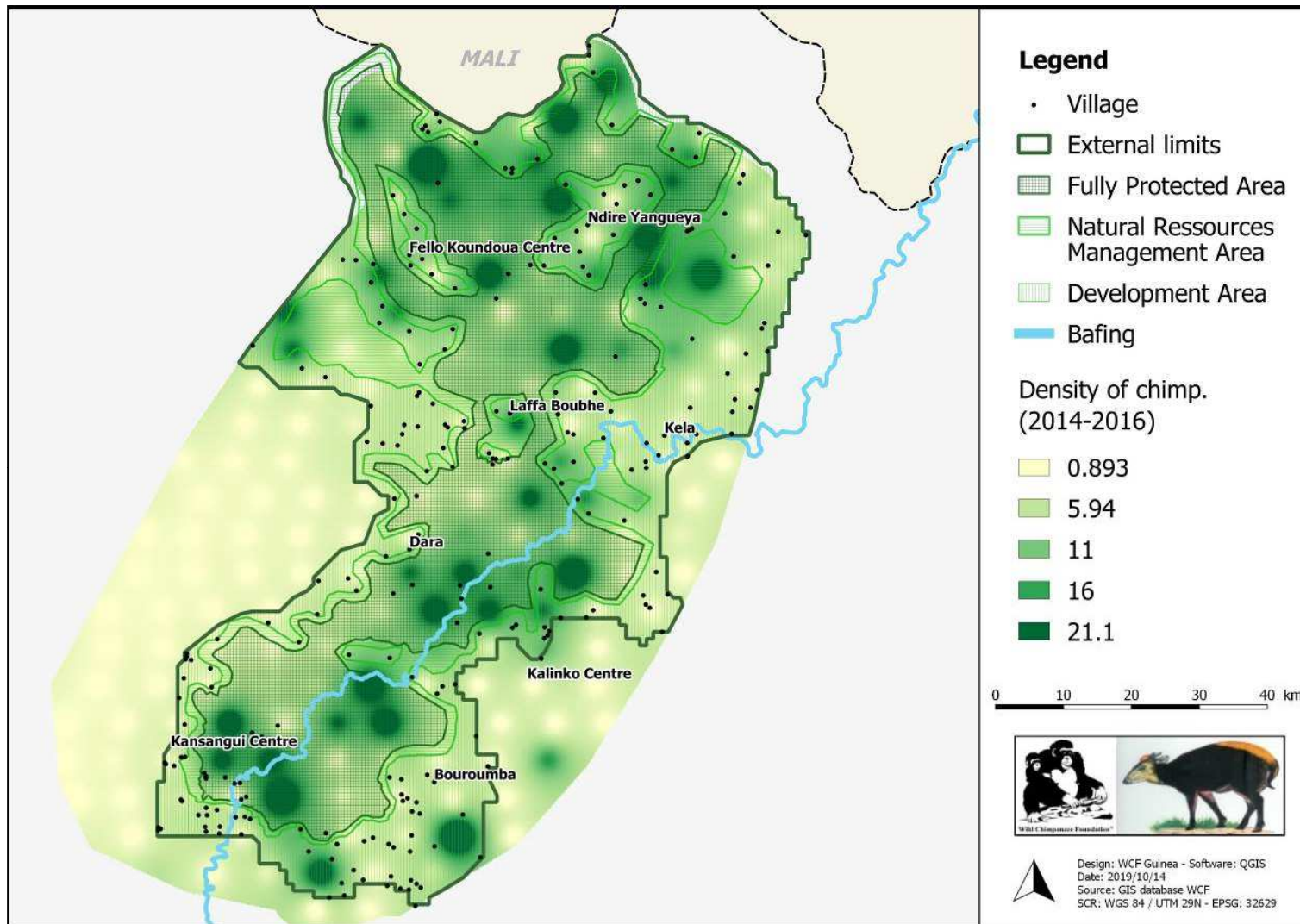
WCF Guinea



Strategic Plan of the Wild Chimpanzee Foundation

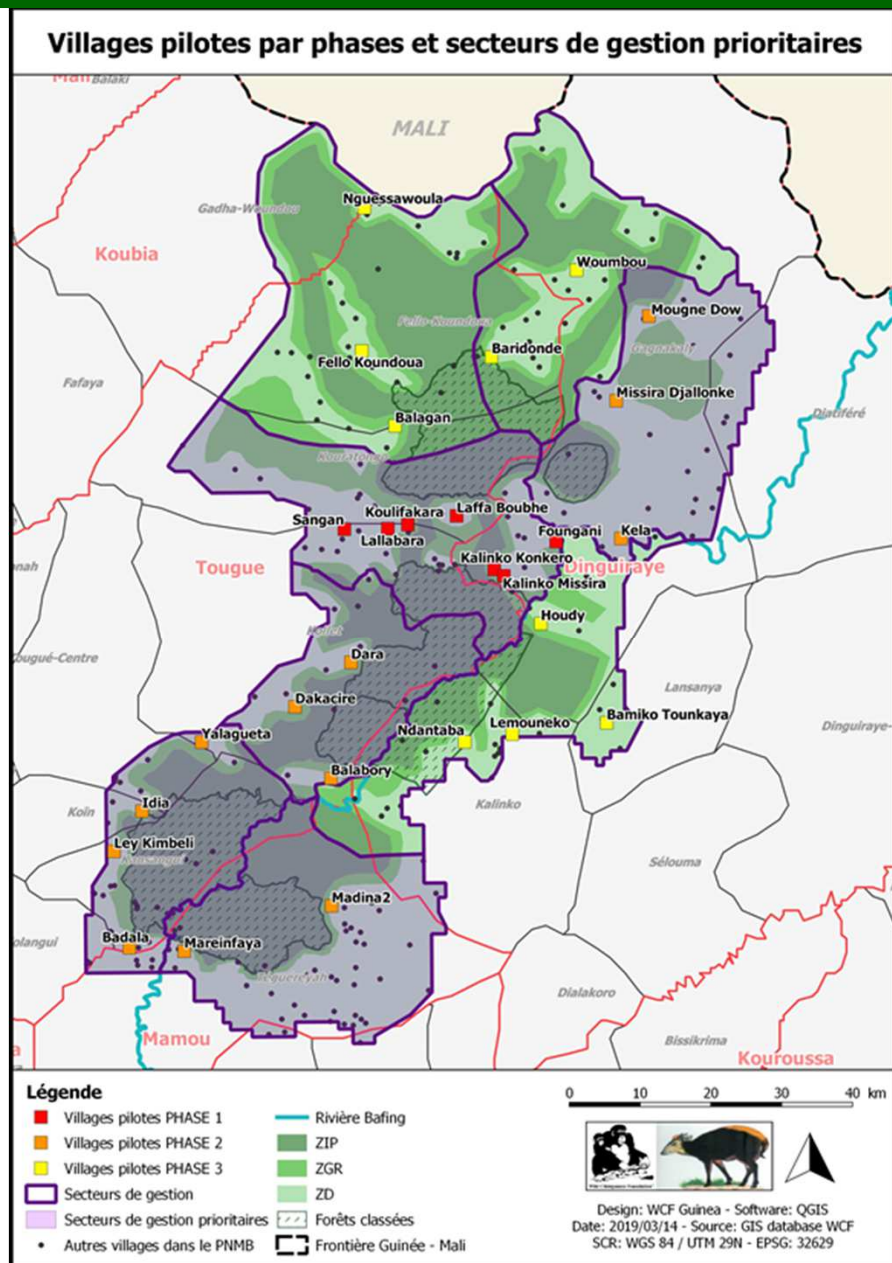


WCF Guinea - Creation of the Moyen-Bafing National Park



**Refuge for more than 5'500 chimpanzees.
The largest chimpanzee population in West Africa.**

WCF Guinea - Creation of the Moyen-Bafing National Park



Employment in the park (2019)

Ecogardes	24 pers.
Community animateur	12 pers.
Personne relai	8 pers.
Guide	88 pers.
Porteur	14 pers.
Intendance bivouac	30 pers.
Suivi d'échelles	34 pers.
Tree nurseries	40 pers.
Bush-fire management	1500 pers.

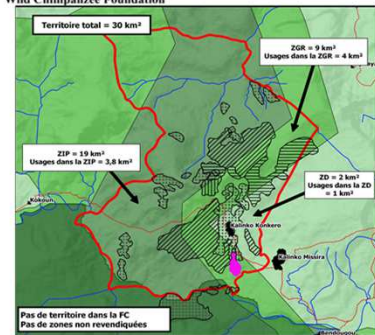
Capacity building in the park (2019)

Paysans Leader	12 pers.
Agro-foresterie (RNA)	254 pers.
Maraichage	250 pers.
Diversification alimentaire	221 pers.
Préparation des sols	175 pers.
Biopesticide	175 pers.
Lutte champignon	119 pers.
Apiculture	169 pers.

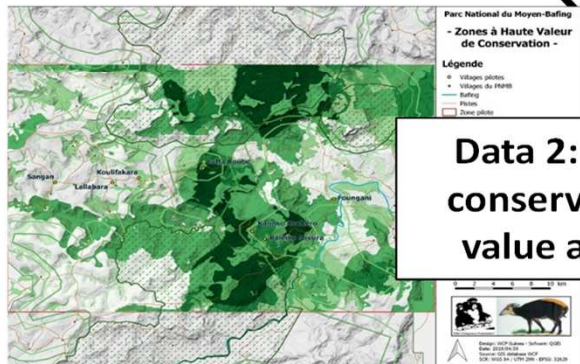
WCF Guinea - Creation of the Moyen-Bafing National Park



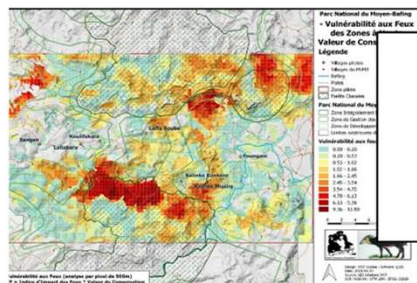
Integrated Landscape Planning Compilation of complementary data sets



Data 1: Village territory and usages



Data 2: High conservation value areas

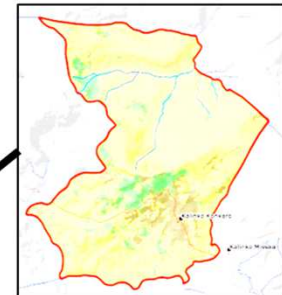


Data 3: Bushfire vulnerable areas

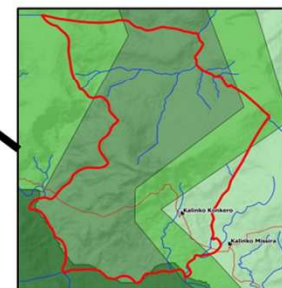


Village Territory Management Plan (VTMP)

Data 4: Gaps between high conservation value areas



Data 5: Limits of the 3 zones of the park

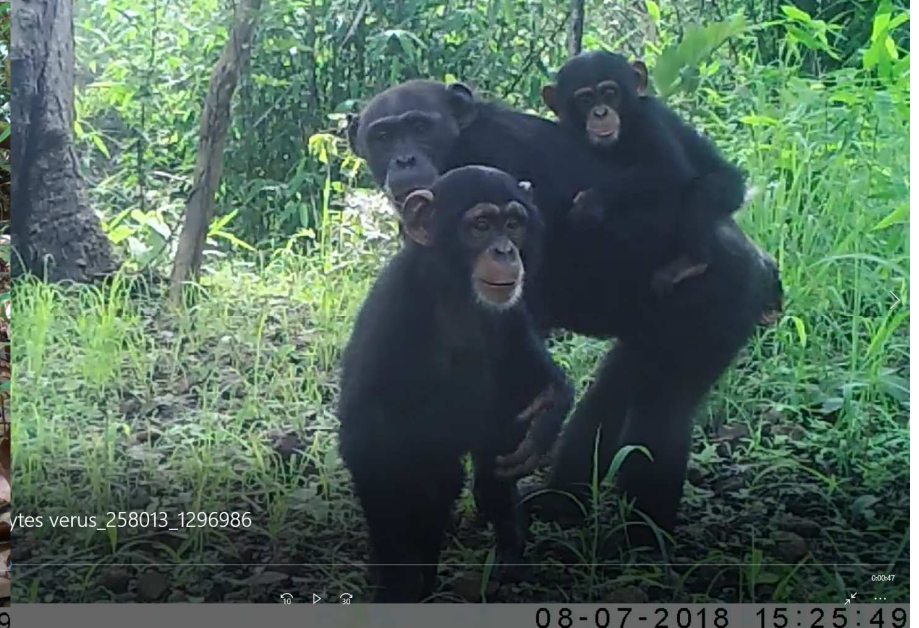


WCF Guinea - Creation of the Moyen-Bafing National Park



Biomonitoring with camera traps systematically set up in the Moyen-Bafing National Park.

WCF Guinea - Camera trap monitoring in Moyen-Bafing National Park



73°F 22°C

05-19-2018 09

08-07-2018 15:25:49

WCF Guinea - Camera trap monitoring in Moyen-Bafing National Park



06-27-2019 02:42:36 C



01-28-2019 07:48:43



66°F 18°C

05-19-2019 02:35:13



87°F 30°C

01-21

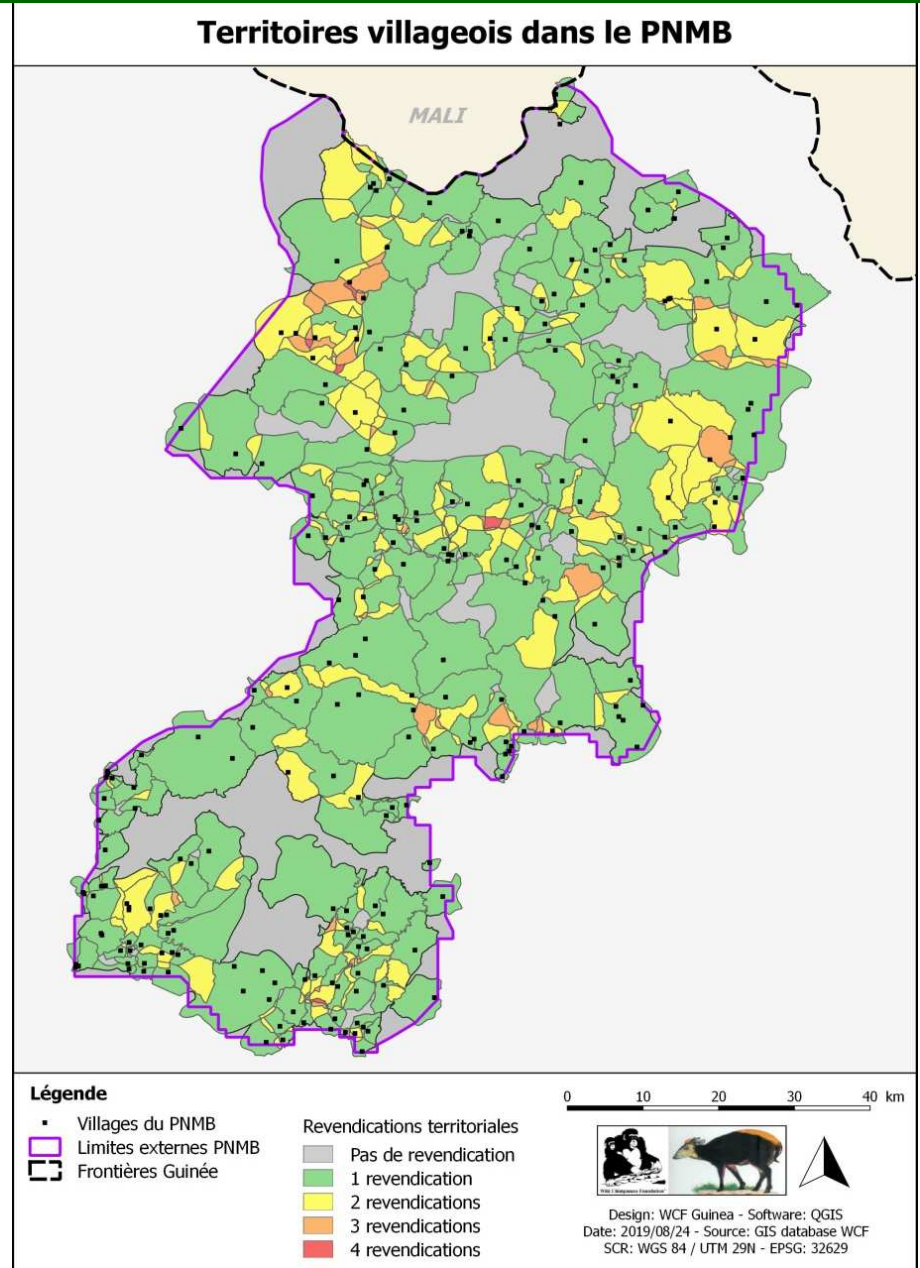
WCF Guinea - Creation of the Moyen-Bafing National Park

Biomonitoring with camera traps: the presence of a lion is confirmed!

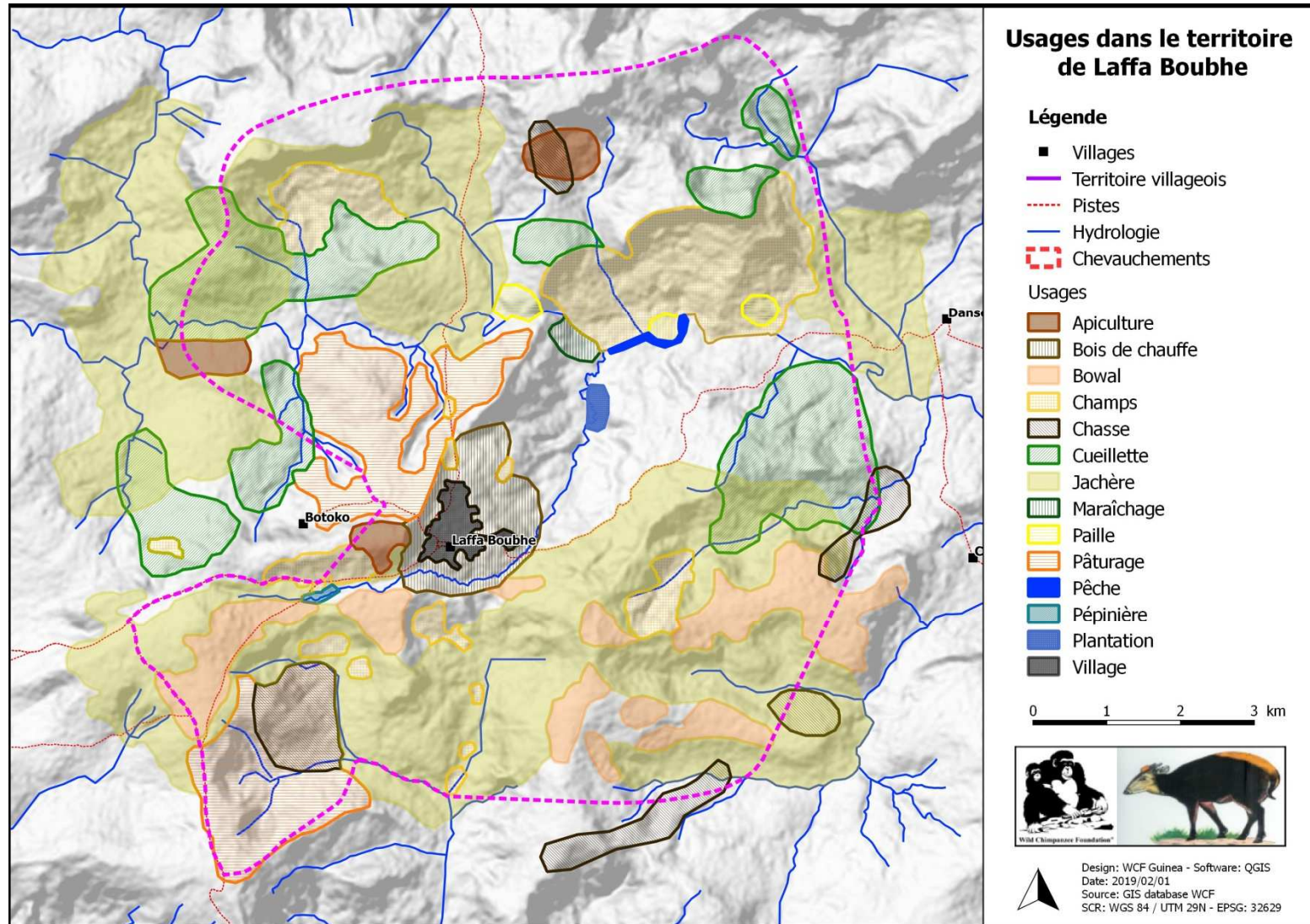


WCF Guinea - Creation of the Moyen-Bafing National Park

Study about the history and territory of the villages (255) inside the park. Participatory mapping with the local communities about each village's territory and use of land.



WCF Guinea - Creation of the Moyen-Bafing National Park



Participatory mapping and use of land by local communities.

WCF Guinea - Creation of the Moyen-Bafing National Park



**Assisted Natural
Regeneration project:**
Community awareness
workshops have identified **12
farmer leaders** to implement an
Assisted Natural Regeneration
project in six villages.



WCF Guinea - Creation of the Moyen-Bafing National Park

Reforestation: Five new tree nurseries with trained teams. Tree planting done at different sites in the park.



WCF Guinea - Creation of the Moyen-Bafing National Park

Bushfires are the major threat to the Moyen-Bafing National Park.



WCF Guinea - Creation of the Moyen-Bafing National Park

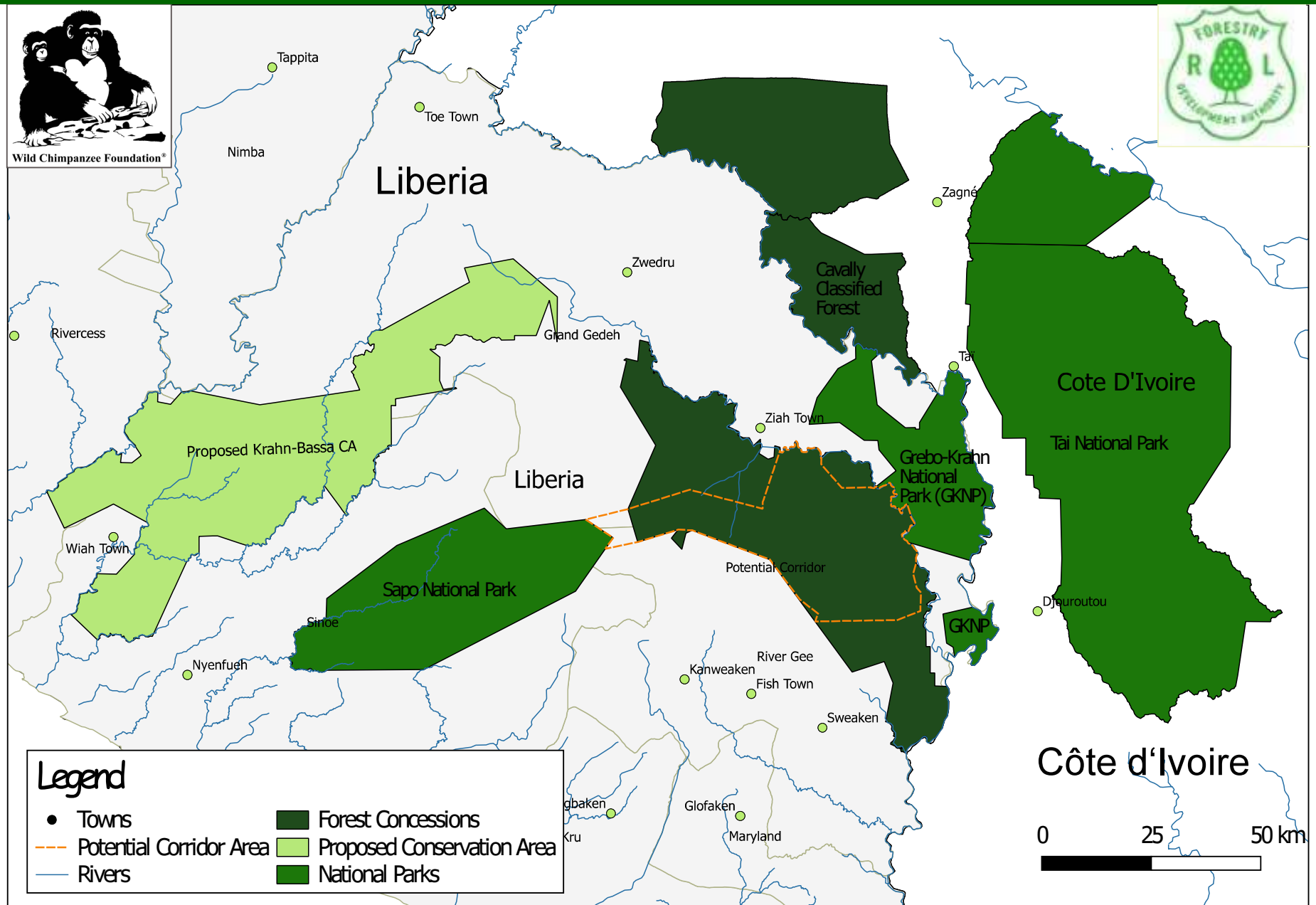
May and September 2019: WCF participated in the **inter-ministerial commission meetings** with representatives from the Ministry of Agriculture, of Environment, Water and Forests, of Mines and Geology, and of Energy and Hydraulics.



Tai-Grebo-Sapo Forest Complex



Wild Chimpanzee Foundation®



WCF Liberia - Transboundary Law Enforcement Technical Committee



In March 2019, alongside with the Ivorian WCF team, WCF Liberia has been organizing the **second meeting of the Transboundary Law Enforcement Technical Committee** in Monrovia.

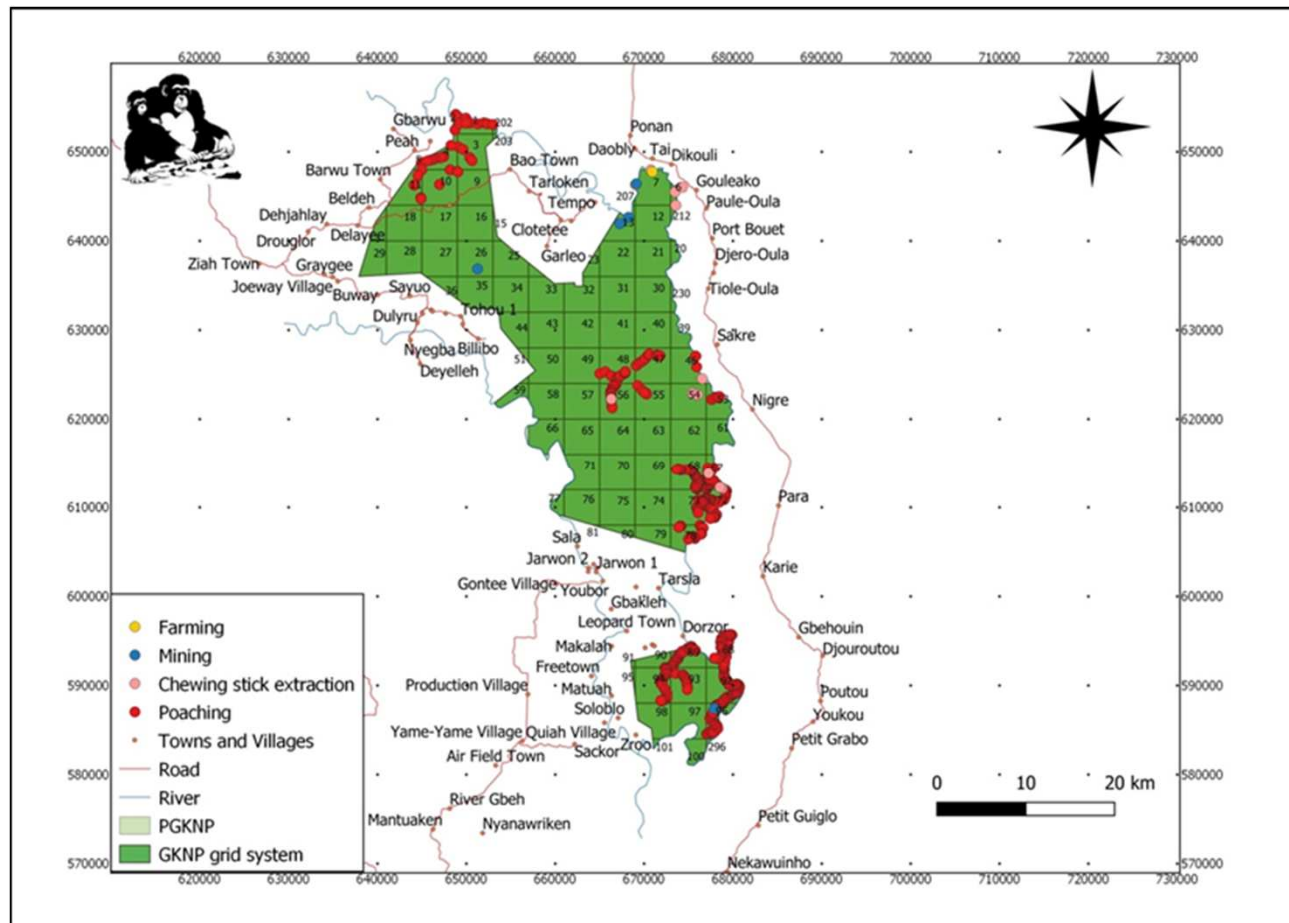
WCF Liberia – Community eco-guard program in Grebo-Krahn National Park



In 2019, the community eco-guards reached **754 persons** during **52 sensibilisation meetings** around Grebo-Krahn National Park.

WCF Liberia – Community eco-guard program in Grebo-Krahn National Park

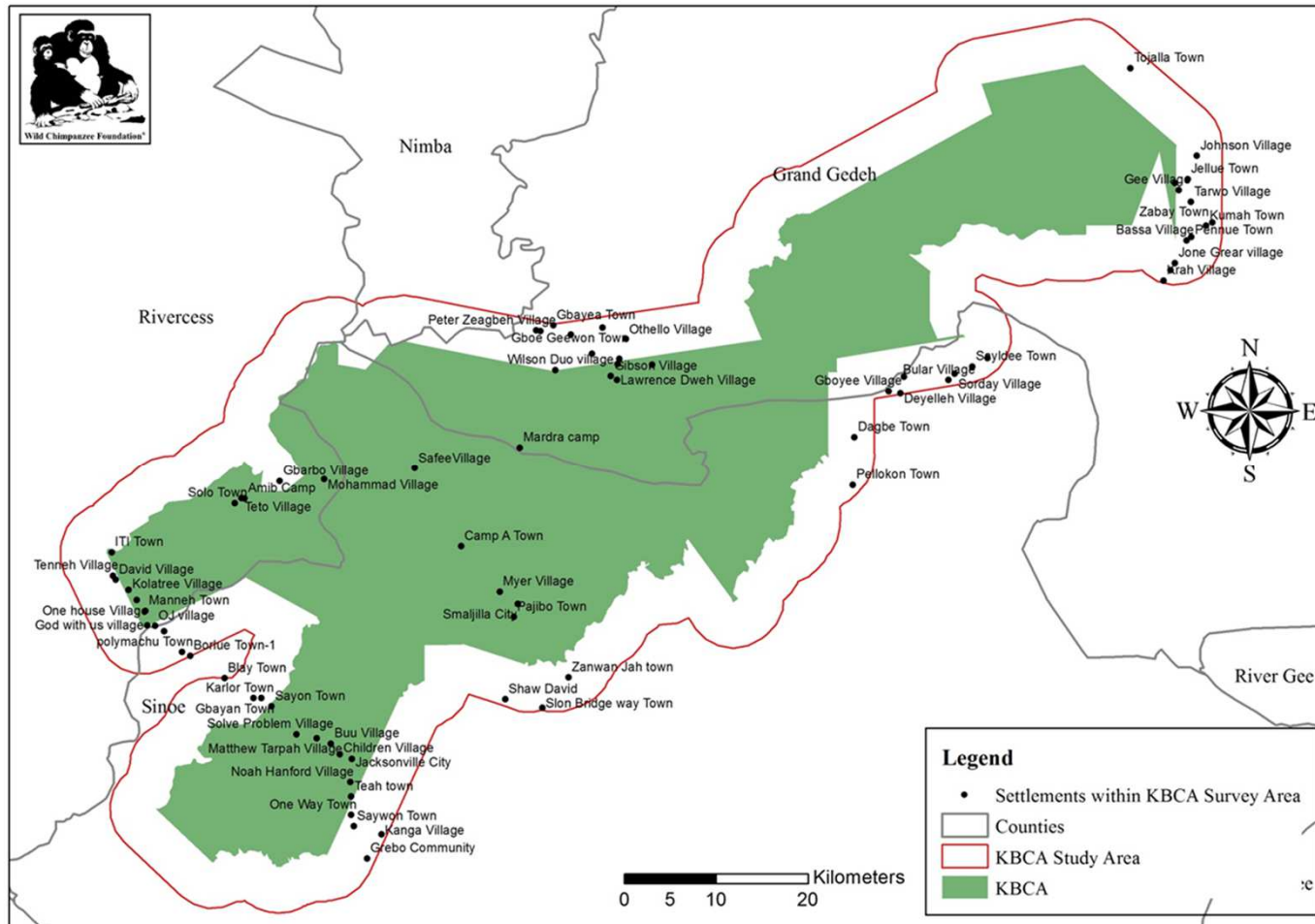
Since 2014, the trained local **community eco-guard teams** for Grebo-Krahn National Park support the Forestry Development Authority (FDA). In **2019**, they conducted **55 law enforcement missions** with FDA inside Grebo-Krahn National Park.



Observations of illegal activities made by the eco-guards inside Grebo-Krahn National Park in February 2019 (monthly SMART report)

WCF Liberia - Creation of the Krahn-Bassa National Park

In 2019, the socio-economic survey was conducted in February-March 2019 and the camera trap survey in April 2019.



Map of the Proposed Krahn-Bassa Conservation Area with the names and locations of all towns and villages that fell within the conservation area

WCF Liberia - Community Watch Teams in Sapo National Park

Since December 2018, one **WCF supervisor is permanently based at Sapo National Park** to ensure better supervision and support for the community watch teams (100 persons).

In **May 2019, WCF opened an office** at the headquarters of Sapo National Park in Jallay's Town for the first time.



From January to May 2019, the community watch teams, together with FDA rangers, conducted **37 forest patrols** in Sapo National Park.

WCF Liberia - Sustainable alternative livelihoods - Fish-farming

Since 2016, we support **fish-farming** in the region of Grebo-Krahn National Park. In four communities, 14 fish-farmers were trained and they maintain a total of **17 fish ponds**. In **2019**, 2 additional community members from Sayuo decided to join the fish-farming group and have started to construct their own ponds.



WCF Liberia - Sustainable alternative livelihoods – Beekeeping



WCF is working with the Universal Outreach Foundation (UOF) for the beekeeping projects. In 2019, **223 persons from 23 communities around Grebo-Krahn National Park** were doing beekeeping with us.

WCF Côte d'Ivoire – Anti-poaching project in Taï National Park

Since 2008, WCF conducts the **anti-poaching program in the eco-tourism and research zones of Taï National Park**. In 2019, the team finished 96 line transects and detected 3.63 indice/km of monkey signs, and 0.33 indice/km of illegal human activity signs.

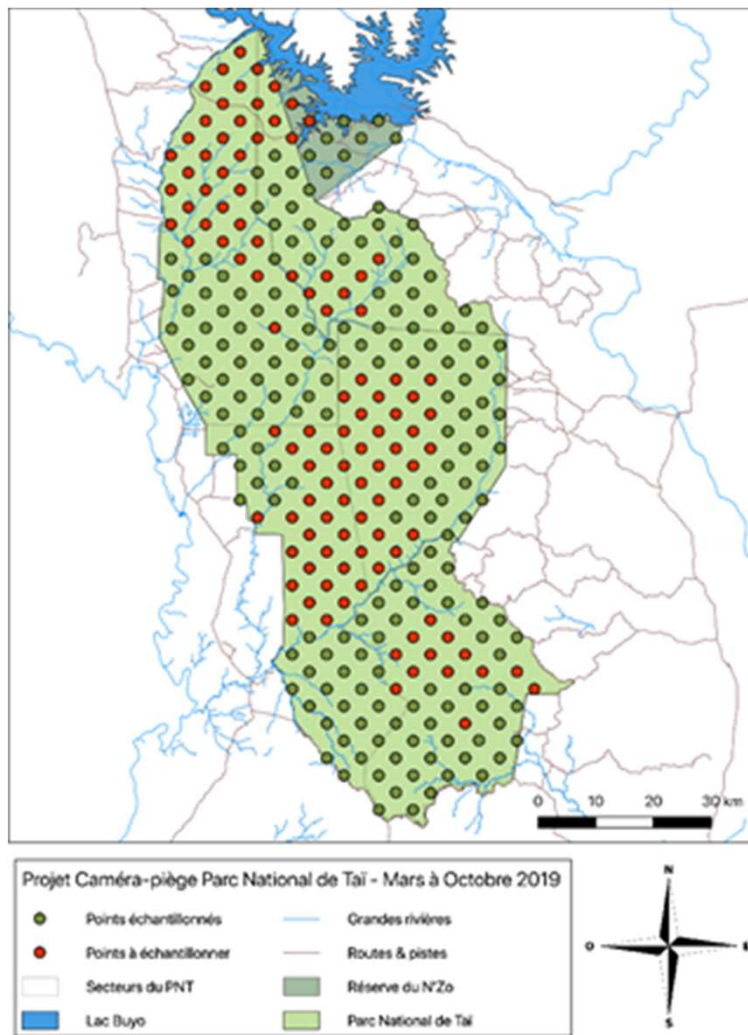


Sampling design of 96 lines transects

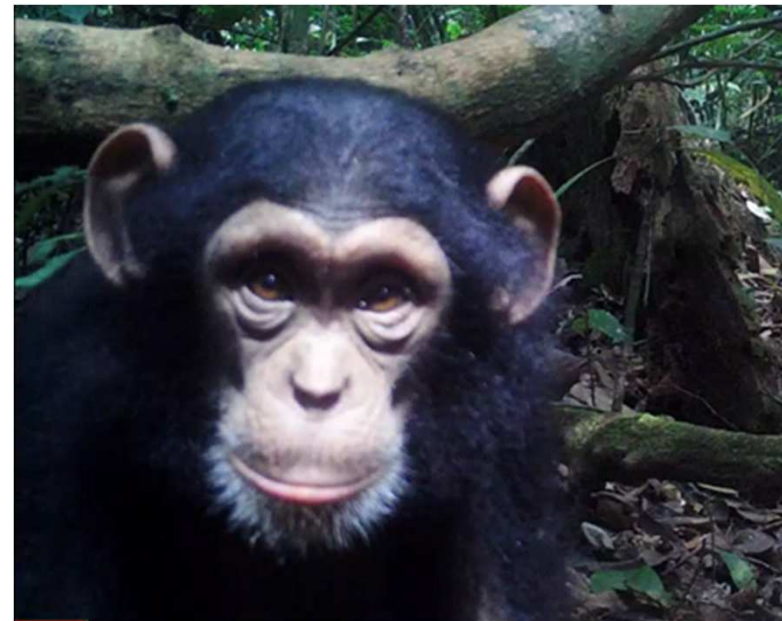


WCF Côte d'Ivoire – Camera trap monitoring in Taï National Park

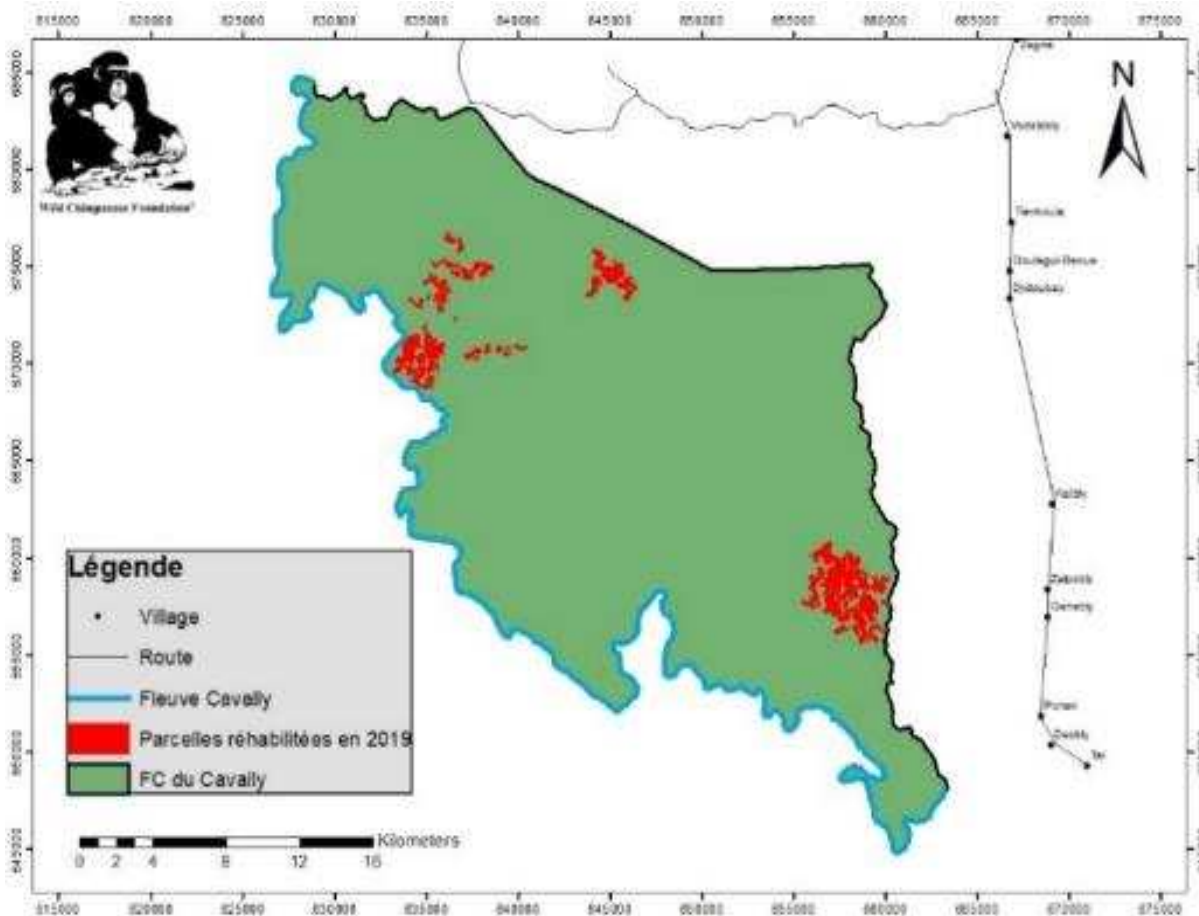
To develop a more precise monitoring tool, 200 camera traps are being installed in Taï National Park in 2019.



Sampling design of 291 point transects



WCF Côte d'Ivoire – Cavally Classified Forest



In 2019, **1'454 ha** of the **Cavally Classified Forest** have been rehabilitated. These areas have been destroyed before, the plantations are removed and the forest can grow back.

Map of Cavally Classified Forest with the rehabilitation zones from 2019 in red.



WCF Côte d'Ivoire – Cavally Classified Forest



In 2019, the independent forest monitoring continued for **the Cavally Classified Forest**.

WCF trained local NGOs on forest governance and transparency.



WCF Côte d'Ivoire/Liberia – Cavally Classified Forest/Grebo-Krahn National Park

In 2019, **three camera traps** have been installed on the border of Cavally Classified Forest and Grebo-Krahn National Park to document the animal movements between both forests.

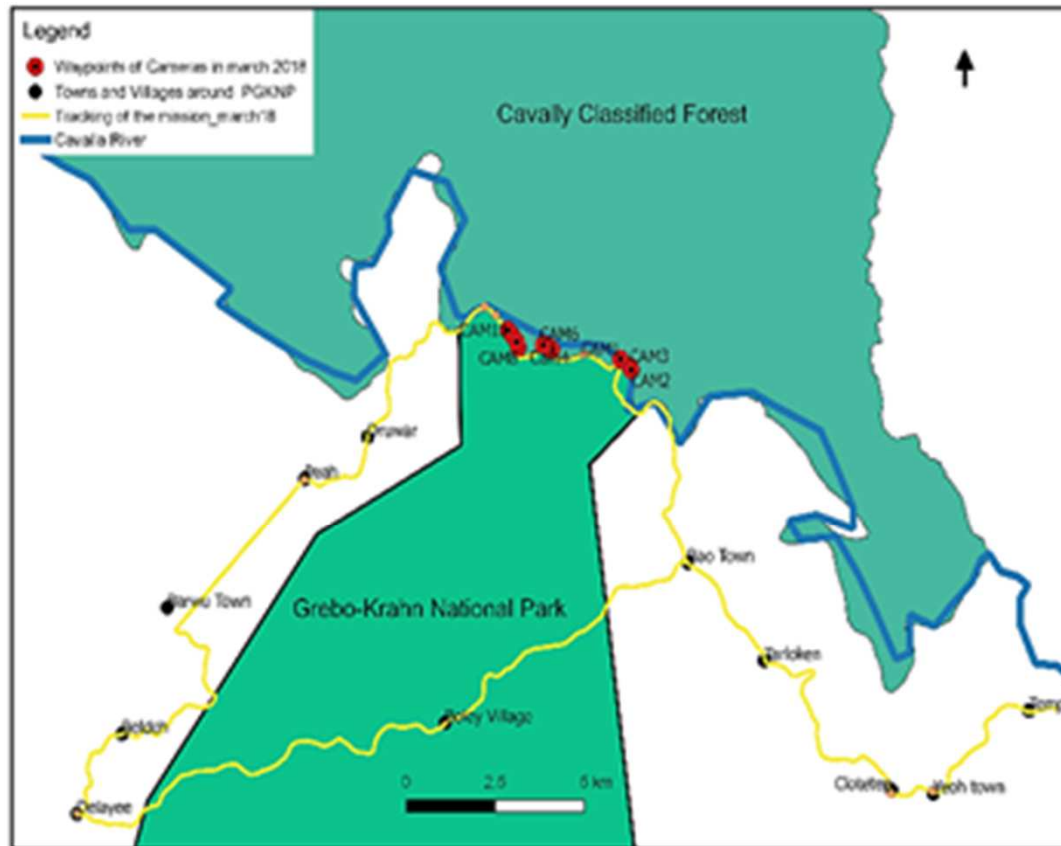


Figure 1: Emplacement de trois caméras entre la forêt classée de Cavally (FCC) et le Parc National de Grebo-Krahn (PNGK)

Gold mining activities on Cavally river

WCF Côte d'Ivoire - Sustainable alternative livelihoods

WCF is working with API Consulting to install beekeeping projects in the Taï region.

In 2019, **24 persons** from Paulé-Oula, Djouroutou and Soubré were doing **beekeeping** with us. Other sustainable livelihoods projects in the Taï region started in 2019: **chicken farming, pig farming, project Makoré butter, and project Cacao.**



WCF Côte d'Ivoire – Environmental awareness – Ecomuseum Taï



In 2019, **67 environmental awareness meetings**, attended by **1793 persons**, were held in the Taï region, and **994 persons** have visited the eco-museum.



WCF Côte d'Ivoire – Theater tour around Taï National Park

In 2019, the Alma Production Company (former Ymako Teatri) performed 15 plays reaching **18'777 spectators** with a theater piece called « Parc national National de Taï : Y'a pas drap ? »



WCF Liberia – Theater

In total, **13,244 persons** were sensitized during all awareness raising activities at Sapo National Park, Grebo-Krahn National Park, and in Monrovia and Paynesville.



WCF Guinea – Theater tour around Moyen-Bafing National Park

A new theater play about the park creation was designed by WCF and the "Tawuly" company contracted via the Association for the Promotion of Health and Education in Guinea. The tour **reached 4'587 persons from 30 villages.**



WCF Guinea – Club P.A.N.



In 2019, WCF continued Club P.A.N. in eight schools in the Moyen-Bafing region with **608 participating children** and **3'298 villagers** were reached through the parent's days.

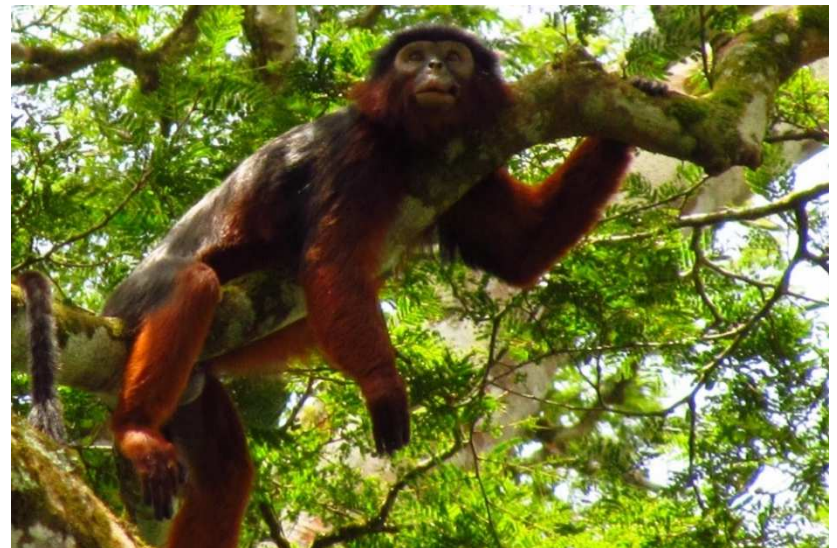
WCF Côte d'Ivoire - Sustainable alternative livelihoods – Eco-tourism

Habituation of chimpanzees for eco-tourism in Taï is ongoing.

The mangabey group is fully habituated and includes 40 individuals.

The red colobus monkeys are also habituated.

In 2019, **150 tourists** have visited the eco-tourism site in Taï.



WCF – Second World Chimpanzee Day, 14 July 2019

WCF Guinea had open doors at their Labé office



WCF Liberia had celebrations in Monrovia



WCF – Christophe Boesch nominated as Finalist for the Indianapolis Prize 2020

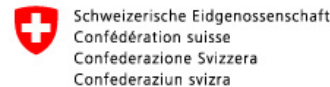


© Frederic Noy / Wild Chimpanzee Foundation

Grants and partners:



Companie
de Bauxite
de Guinée



Bundesministerium für
wirtschaftliche Zusammenarbeit
und Entwicklung

