

Annual Report 2021

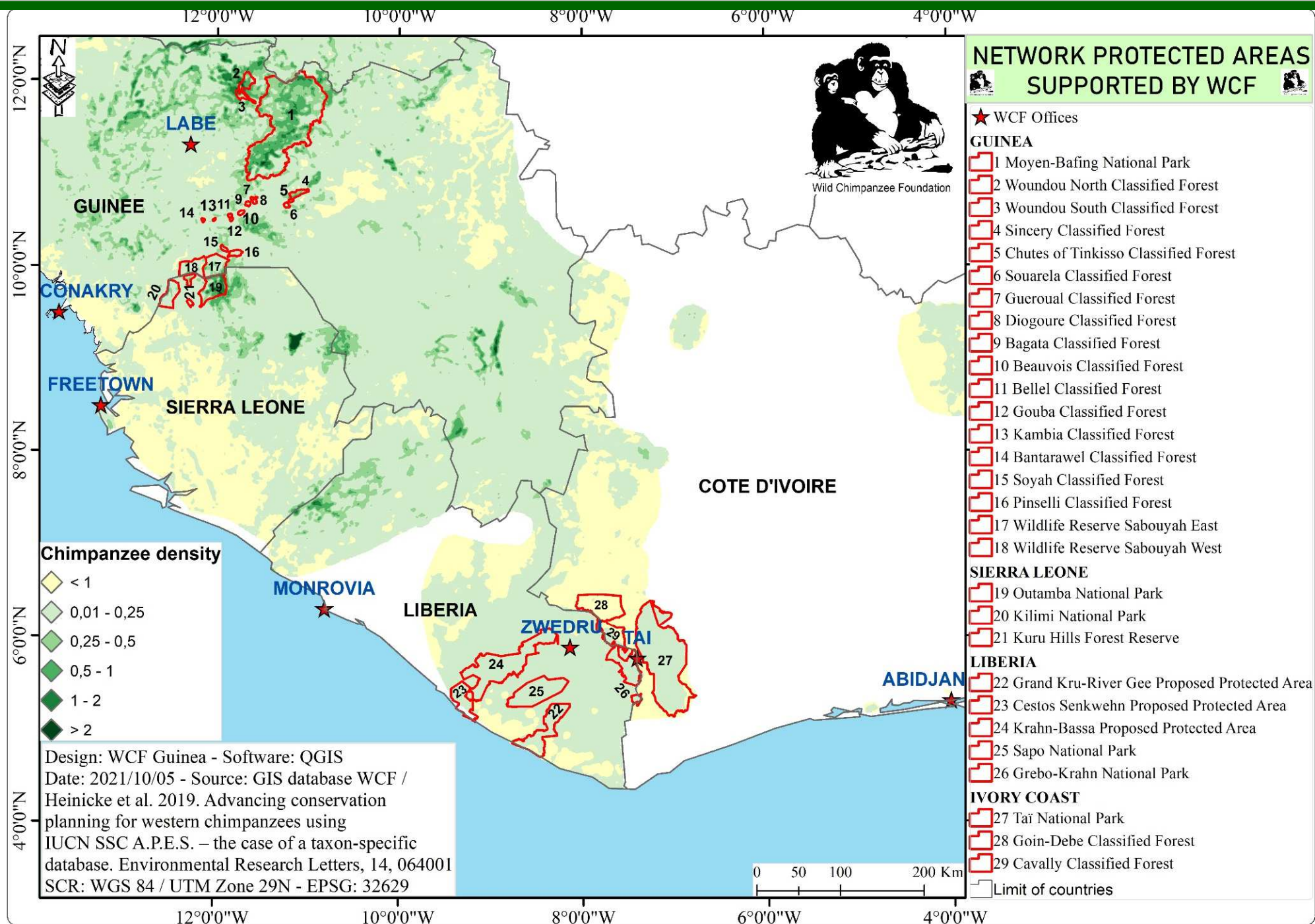


Wild Chimpanzee Foundation®

www.wildchimps.org

©Matt Rolland

Distribution and density of chimpanzees in West Africa



Strategic Plan of the Wild Chimpanzee Foundation

Goal

Protection of wild chimpanzees and their habitats

Strategic objectives

Strengthen support for conservation of chimpanzees and habitat

Strengthen protection of chimpanzee habitat

Strengthen sustainable management of chimpanzee and habitat

Develop research

Project objectives

Raise Awareness

Alternative benefit for populations

Increase environment interest in policy decision

Follow population trends

Improved protected area management

Sustainable funding for PAs

Sustainable logging practices

Sustainable mining practices

Understand processes affecting population trends

Activities

Environment education

Alternative sustainable livelihood

Advocacy

Monitoring

Law enforcement

Ecotourism

Monitoring logging practices

Monitoring mining practices

Research

Theatre
Film
Newsletter
Discussion round
Club PAN

Pilot project with populations
Training of locals
Employment for locals

Lobbying by decision makers
Awareness meetings
Consultancy for inclusions of environment issues

Regular report of animal and habitat status
Impact of law enforcement
Impact of bushmeat hunting

Training of game wardens
Establishment of management plan
Improvement of PA patrols
Better application of law in courts

Entrance fee
Nature trails
Animal viewing

Impact of logging practices
Best practices management plan
Capacity building

Impact of mining practices
Mitigation and offset management plan
Capacity building

New monitoring tools
New evaluation tools
Capacity building
Chimpanzee mortality study - disease

Philosophy of the Wild Chimpanzee Foundation



- **Work to protect the chimpanzees and their habitat with local communities,**
- **Support the local authorities goal of increasing protected areas,**
- **Empower the local population for climate-intelligent activities.**

WCF Guinea



WCF Guinea - Creation of the Moyen-Bafing National Park

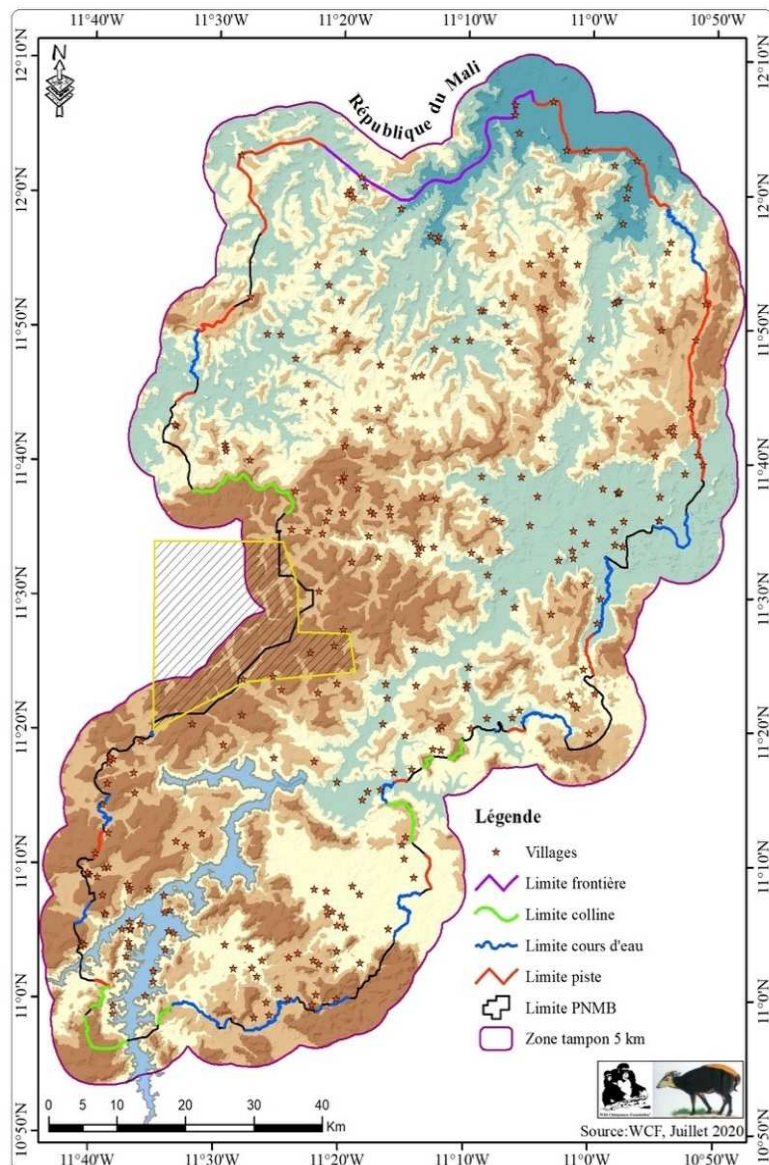
4th May 2021

The President of the Republic of Guinea, Professor Alpha Conde, signed the decree of the Moyen-Bafing National Park.

6767 km² and the largest West African chimpanzee population (over 5'000 chimpanzees) are under protection now.

The park is inhabited by local communities of 36'000 persons / 287 villages.

Biodiversity offset of 2 mining companies under an IFC scheme.

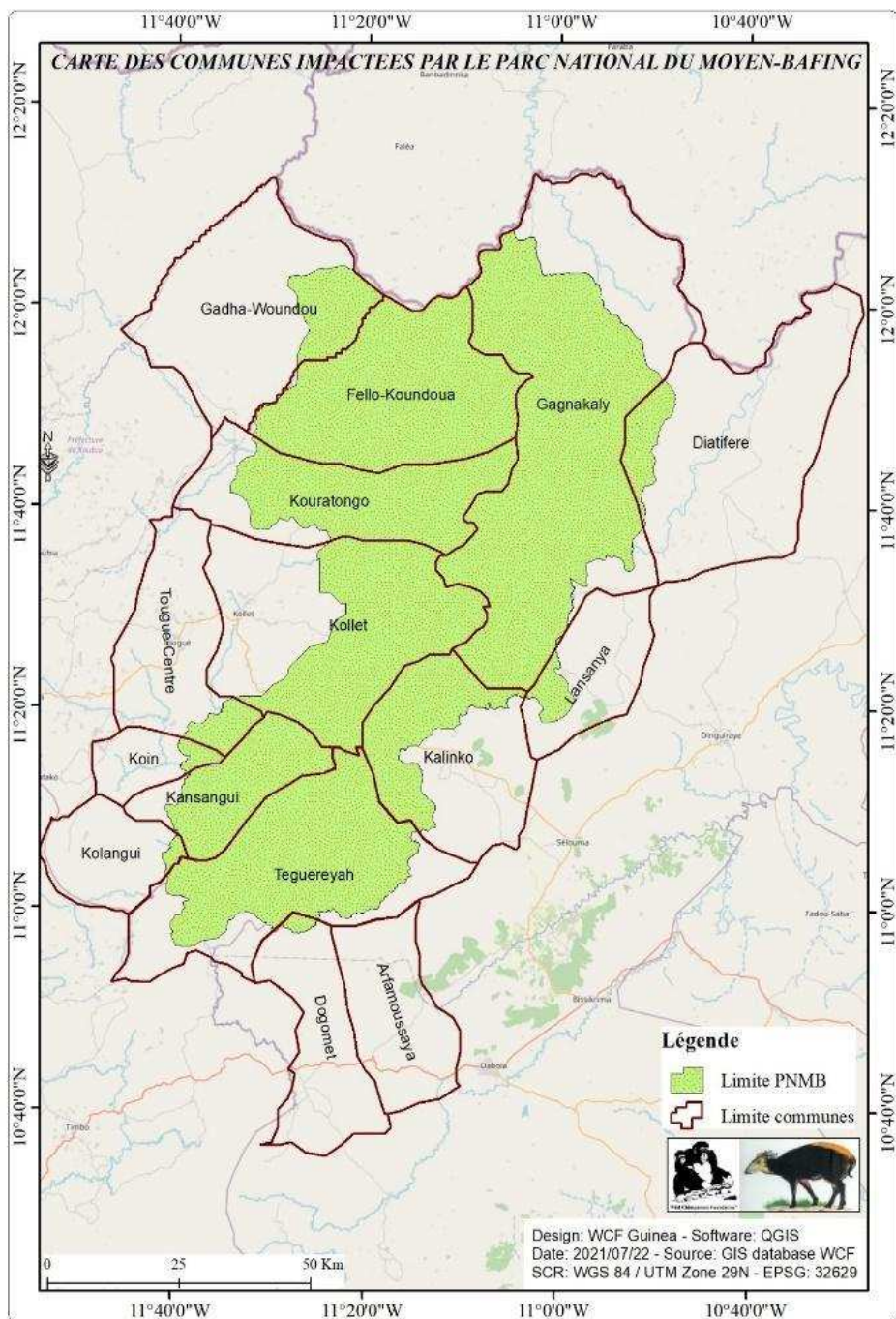


Redefined external boundaries of the Moyen-Bafing National Park, including the Toubal mining concession (yellow polygon); the physical features that form the basis of the different boundary sections are designated by segments of coloured lines (boundary - purple, mountains/hills - green, waterways - blue, and roads/trails - red)

WCF Guinea - Creation of the Moyen-Bafing National Park

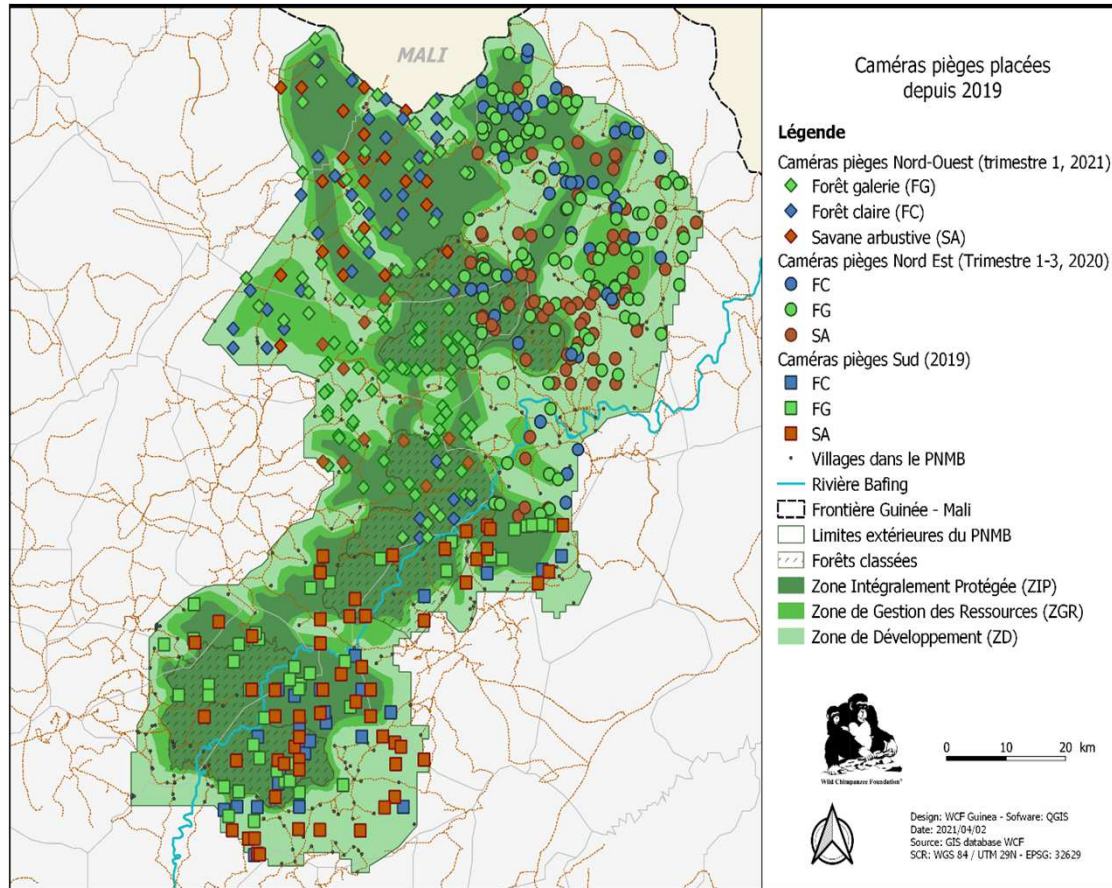
Community involvement and governance

- boundaries were validated by communities in 2020: 207 representatives and stakeholders of the 15 municipalities of the park
- Establishment of:
 - a) 29 village committees, including 12 inter-village committees in 55 villages
 - b) 15 GIGs, including landscape restoration
- Training and assessment in association management and accounting principles for 44 representatives of 15 committees in 2020
- 2,375 stakeholders are actively involved in park management through committees with 1,792 people in CVCDs, 546 in A3CDs and 37 in the Fatière (completed in 2021)
- Livelihood Recovery Plan: 19 pilot villages have their representations of community uses and practices within their territory boundaries



WCF Guinea - Camera trap monitoring in Moyen-Bafing National Park

Biomonitoring with 200 camera traps
systematically set up in the Moyen-Bafing National Park.

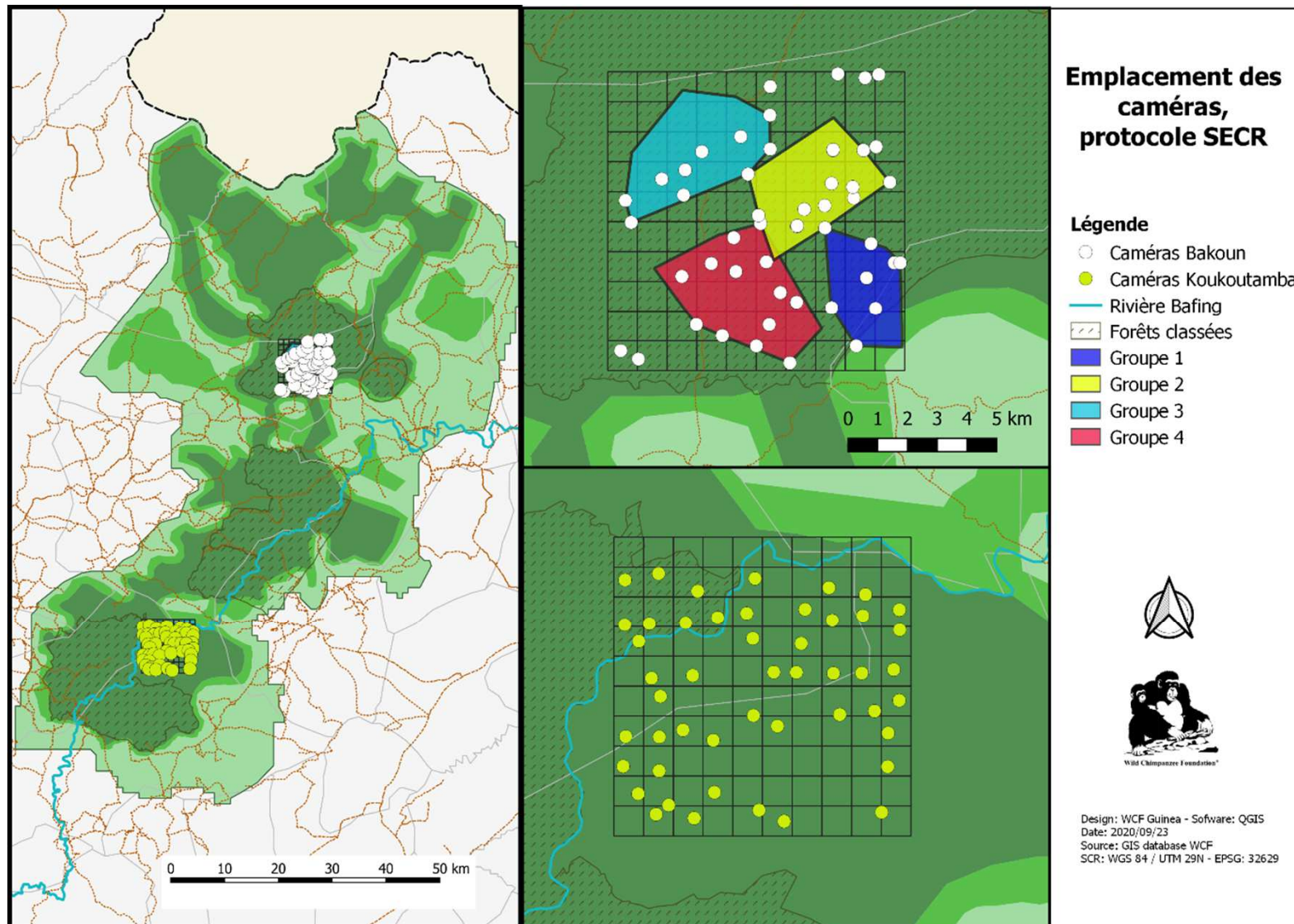


Chimpanzee density:
1,61 ind/km² in gallery forest,
0,92 ind/km² in open forest
0,32 ind/km² in woodland savannah



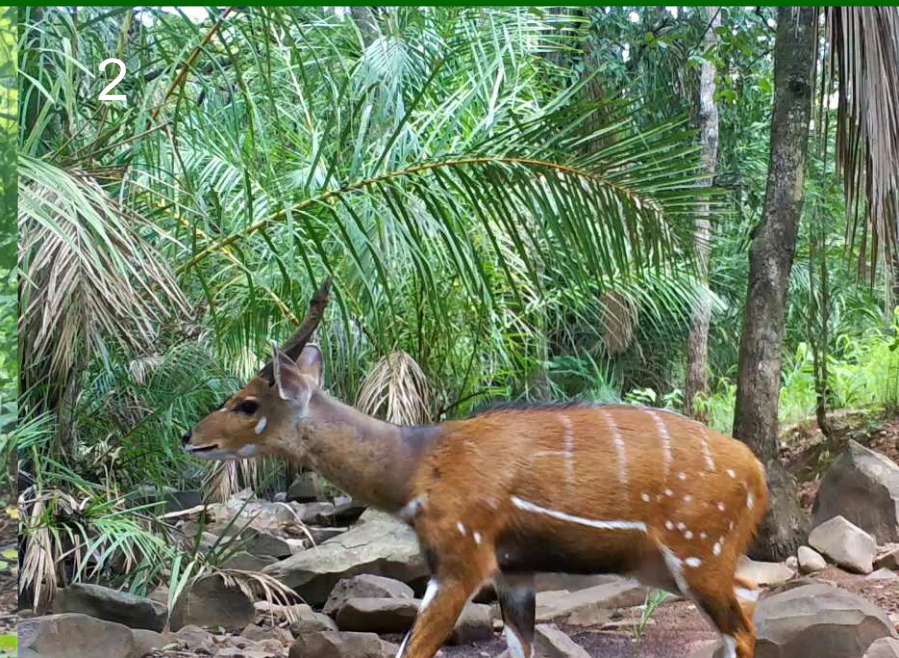
WCF Guinea - Camera trap monitoring in Moyen-Bafing National Park

The total population of chimpanzees in the Moyen-Bafing National Park is estimated at 9,813 individuals (CI= 6,058 to 15,895).



Individual chimpanzee identification from videos is ongoing.

WCF Guinea - Camera trap monitoring in Moyen-Bafing National Park



Screenshots from camera trap videos:

1) Common Warthog (*Phacochoerus africanus*)

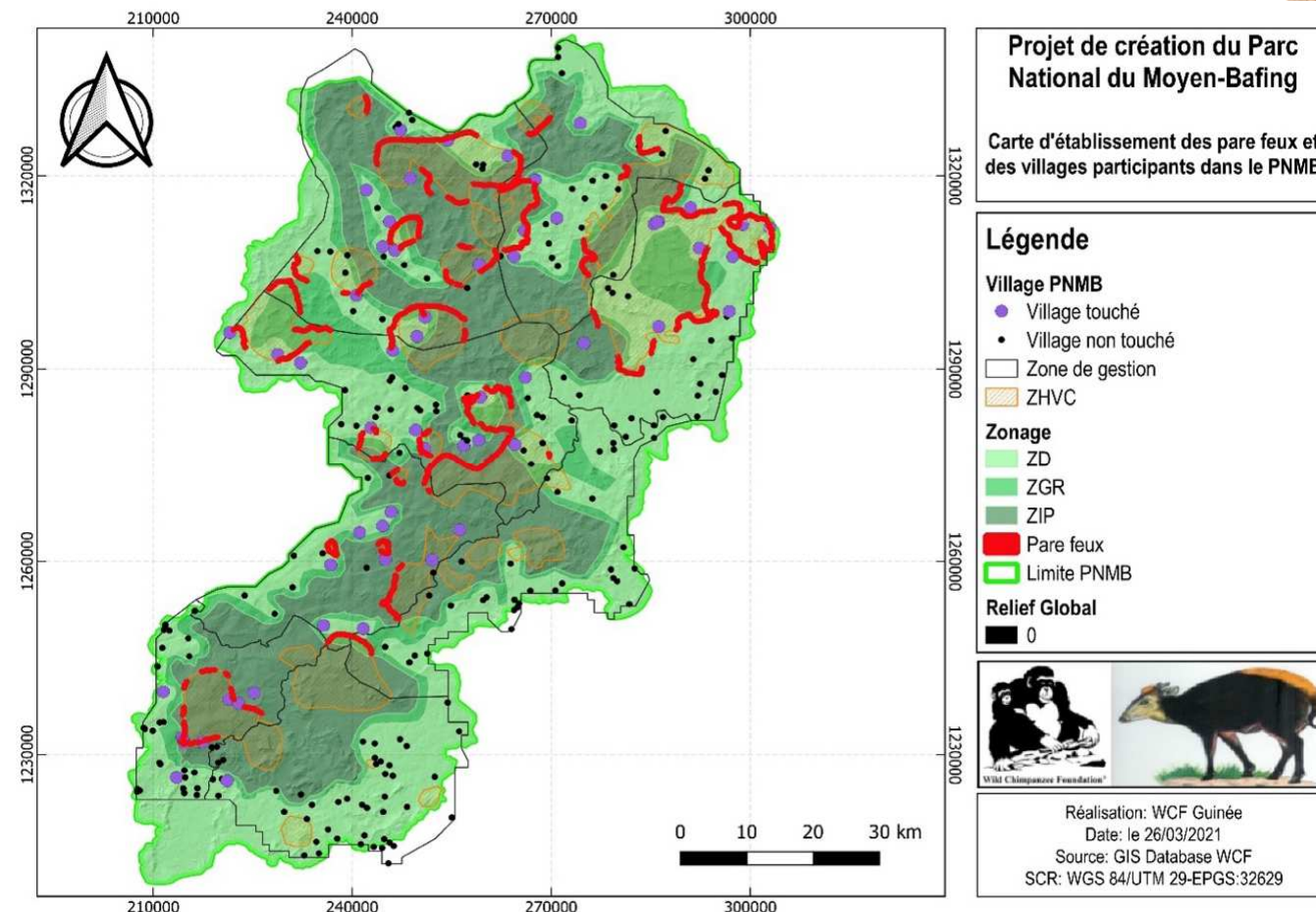
2) Buschbuck (*Tragelaphus scriptus*)

3) West African chimpanzees (*Pan troglodytes verus*)

WCF Guinea – Bushfire management in the Moyen-Bafing National Park

Bushfires are the major threat to the Moyen-Bafing National Park.

Firewalls were built inside the park: 22.024 km long and 15 m wide.



2020: early fire burnt 429 km² of grassy savannahs, 2273 km² or 35.57% of MBNP caught fire this season, of which 13% were controlled early fires, 1650 people participated in fire management activities

2021: 479 km of firebreaks established, 75-80% of forests protected during late fires with 8502 people participating from 58 villages

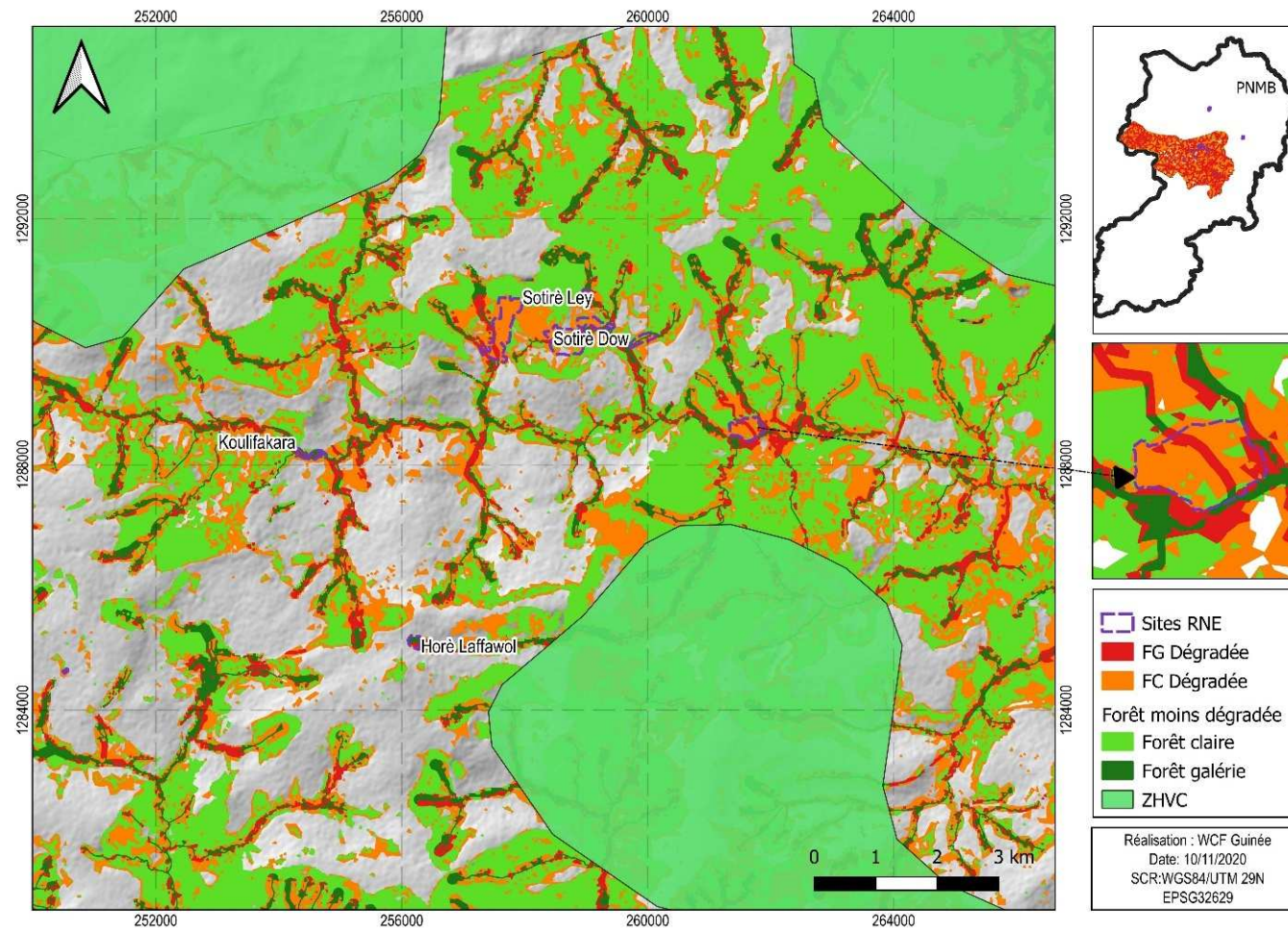
WCF Guinea – Landscape restoration in the Moyen-Bafing National Park

In 2020, 218.48 ha were under **ecological natural regeneration**, 4763 plants are still monitored in 31 plots of 25 m x 25 m.

In 2021, 443 ha were identified and ecological natural regeneration started.



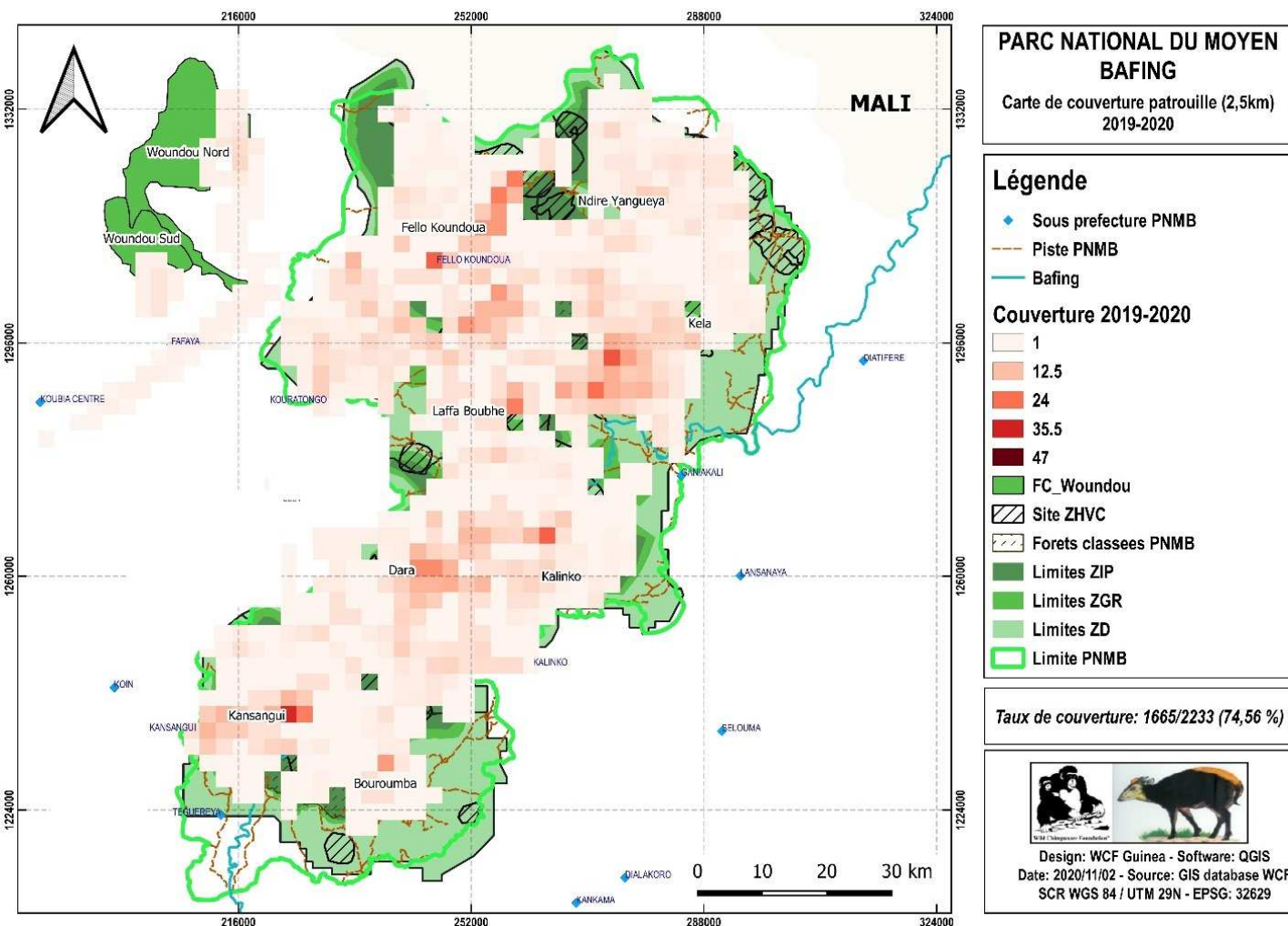
Reforestation with the local population: 12 agreements with the population for the reforestation of 36.4 ha, 8204 seedlings were donated and transported to the reforestation site.



WCF Guinea – Law enforcement in the Moyen-Bafing National Park

In 2020 and 2021, a total of 98 patrols were carried out (5 times more than in 2019).

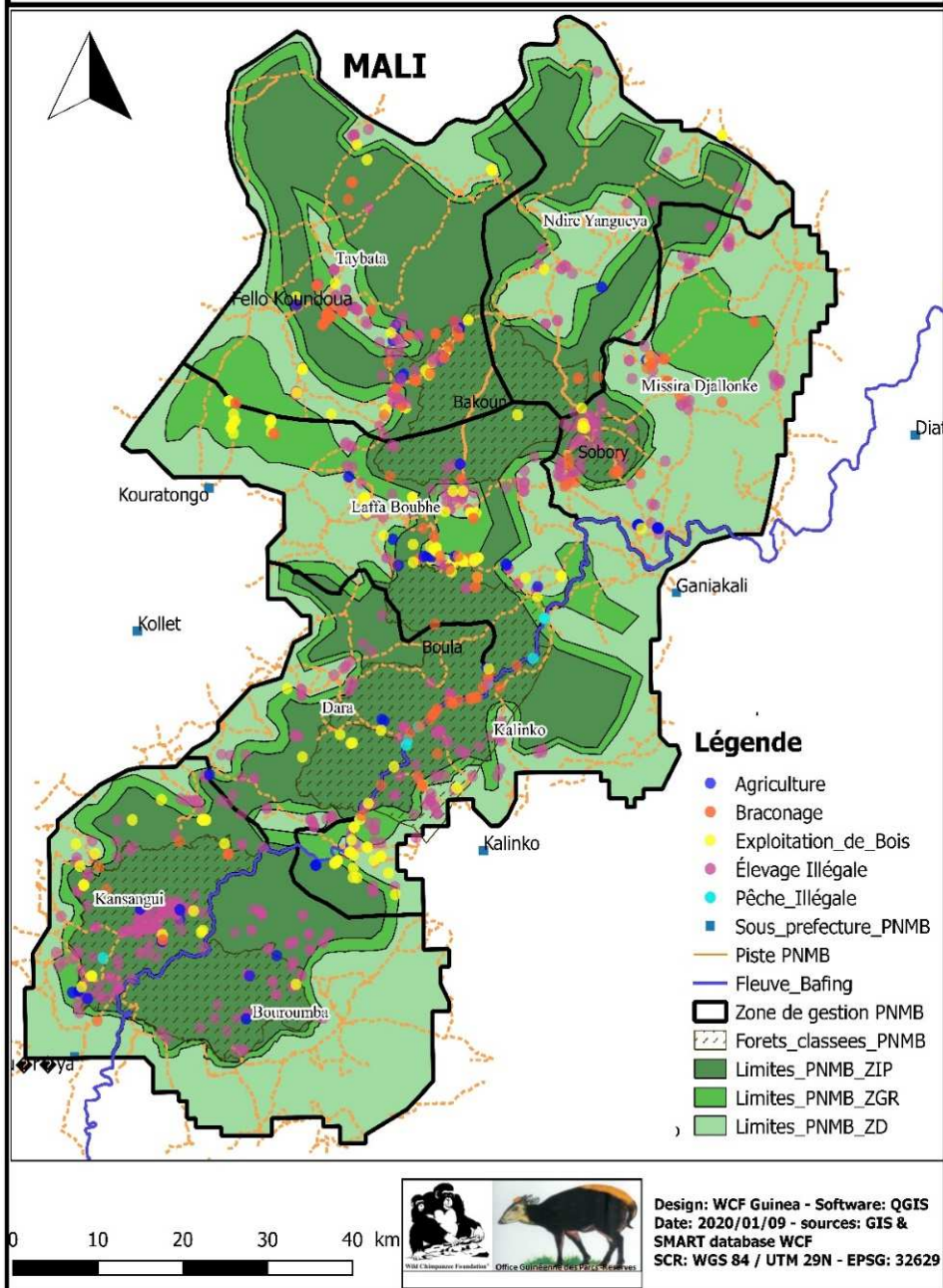
An average coverage of 74.56% for the huge MBNP (6767 km²) was achieved.



WCF Guinea – Law enforcement in the Moyen-Bafing National Park

PARC NATIONAL DU MOYEN BAFING

Carte de distribution sur les activités illégales.2019 - 2020



In 2021, 3 bags of bushmeat were confiscated in Dounkita. Other illegal activities detected in the park are exploitation of wood, fishing, livestock herding and agriculture.



WCF Guinea – Community development in the Moyen-Bafing area

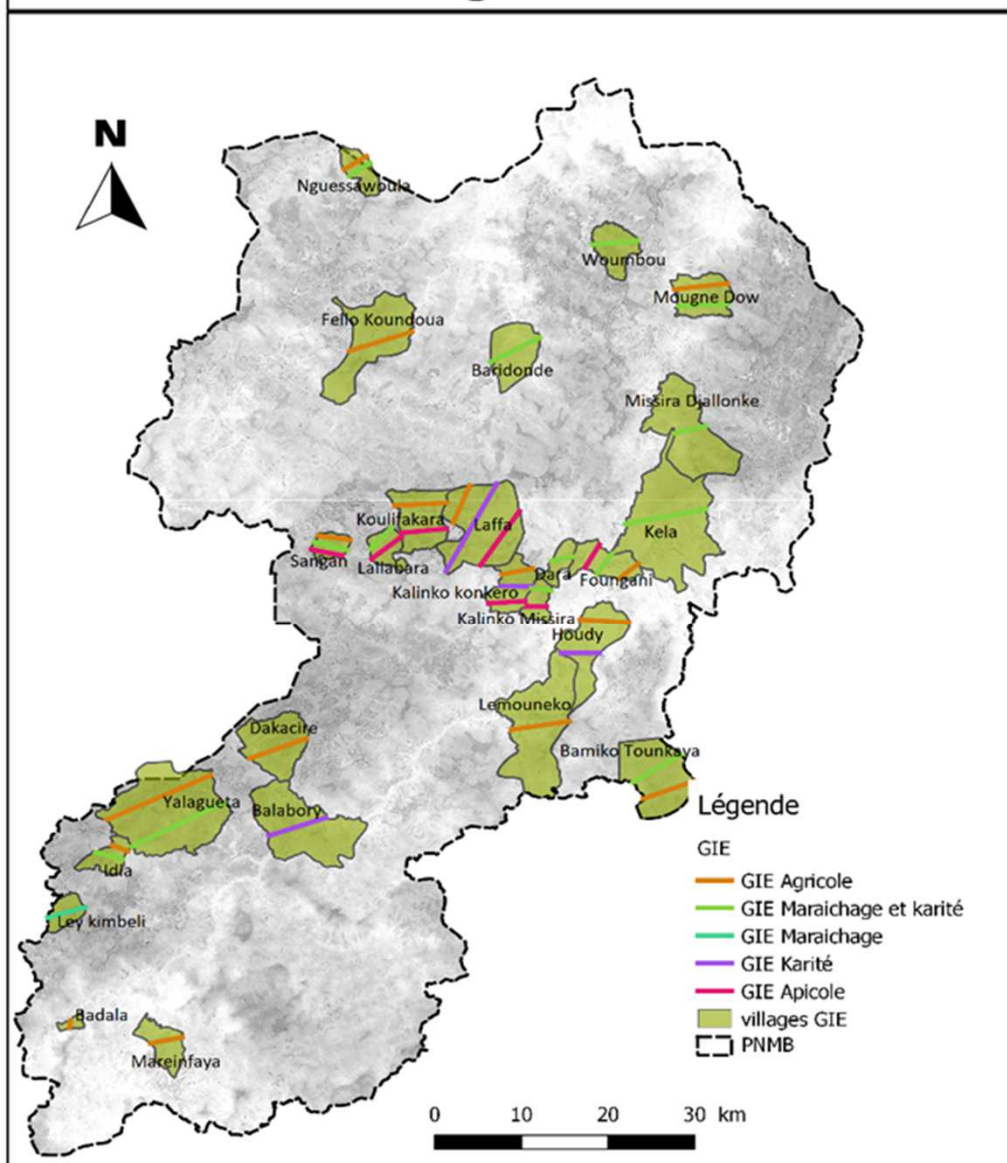


Village	Development project
Nguessawoula	Water pump
Baridonde	Water pump
Fello Koundoua Centre	Water pump
Dara	Water pump
Bellakoure	Construction of a market
Laffa Boubhe	Construction of a honey storage house
Lallabara	Fencing of a 17 ha plain
Kalinko Konkero	Drilling of a borehole
Ley Kimbeli	Drilling of a borehole



WCF Guinea – Community development in the Moyen-Bafing area

Carte des villages GIE du PNMB



Beekeeping: 87 people, 175 Kenyan hives,
 1st harvest: 138 l of honey
 2 harvest: 507 l of honey
 Other agriculture projects: Karité, and onions

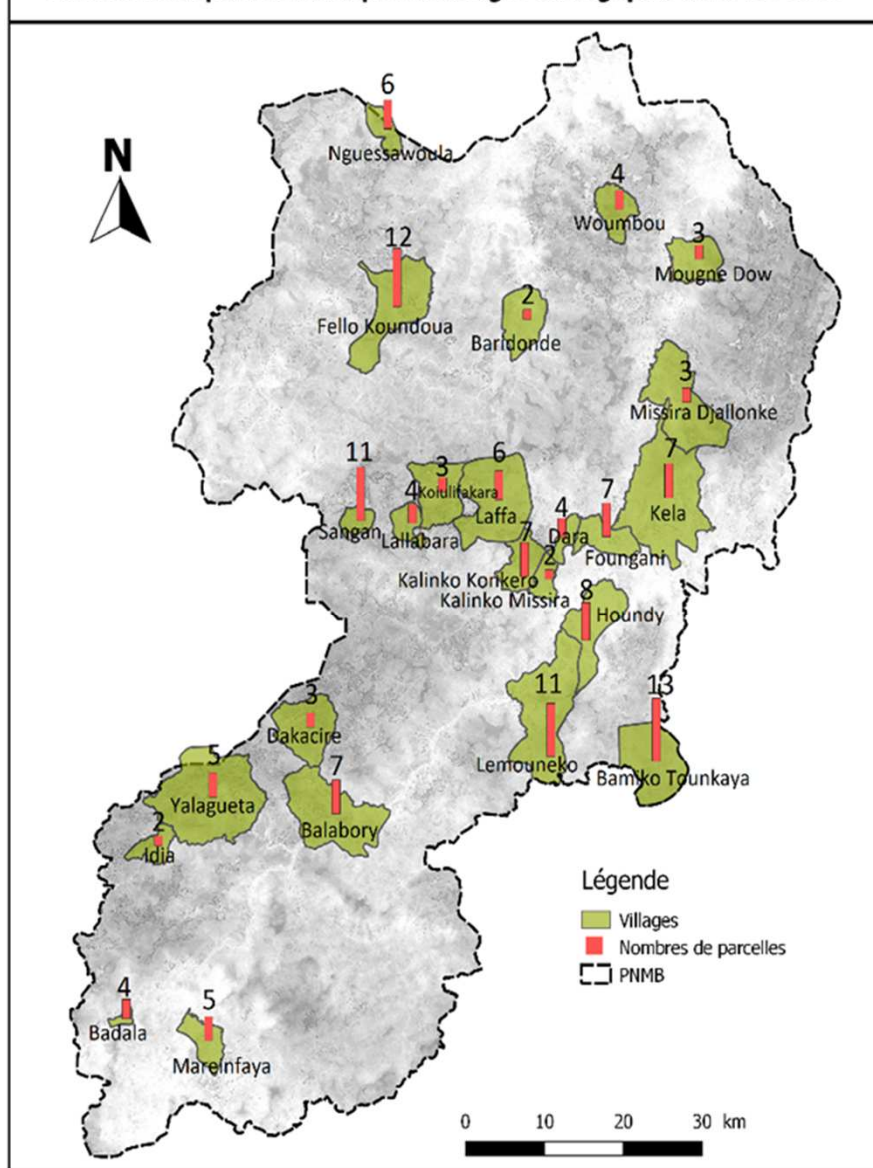


Design: WCF - Software: QGIS
 Date: 2020/11/30 - Source: GIS database WCF
 SCR: WGS 84 / UTM 29N - EPSG: 32629



WCF Guinea – Community development in the Moyen-Bafing area

Carte de la répartition des parcelles agro écologiques dans le PNMB



Support for farmers:

- 139 agro-ecological plots were developed,
- 136 volunteer farmers from 24 pilot villages are supported,
- 137 tapads for 137 women in 25 villages are supported.



Design: WCF - Software: QGIS
Date: 2020/11/30 - Source: GIS database WCF
SCR: WGS 84 / UTM 29N - EPSG: 32629

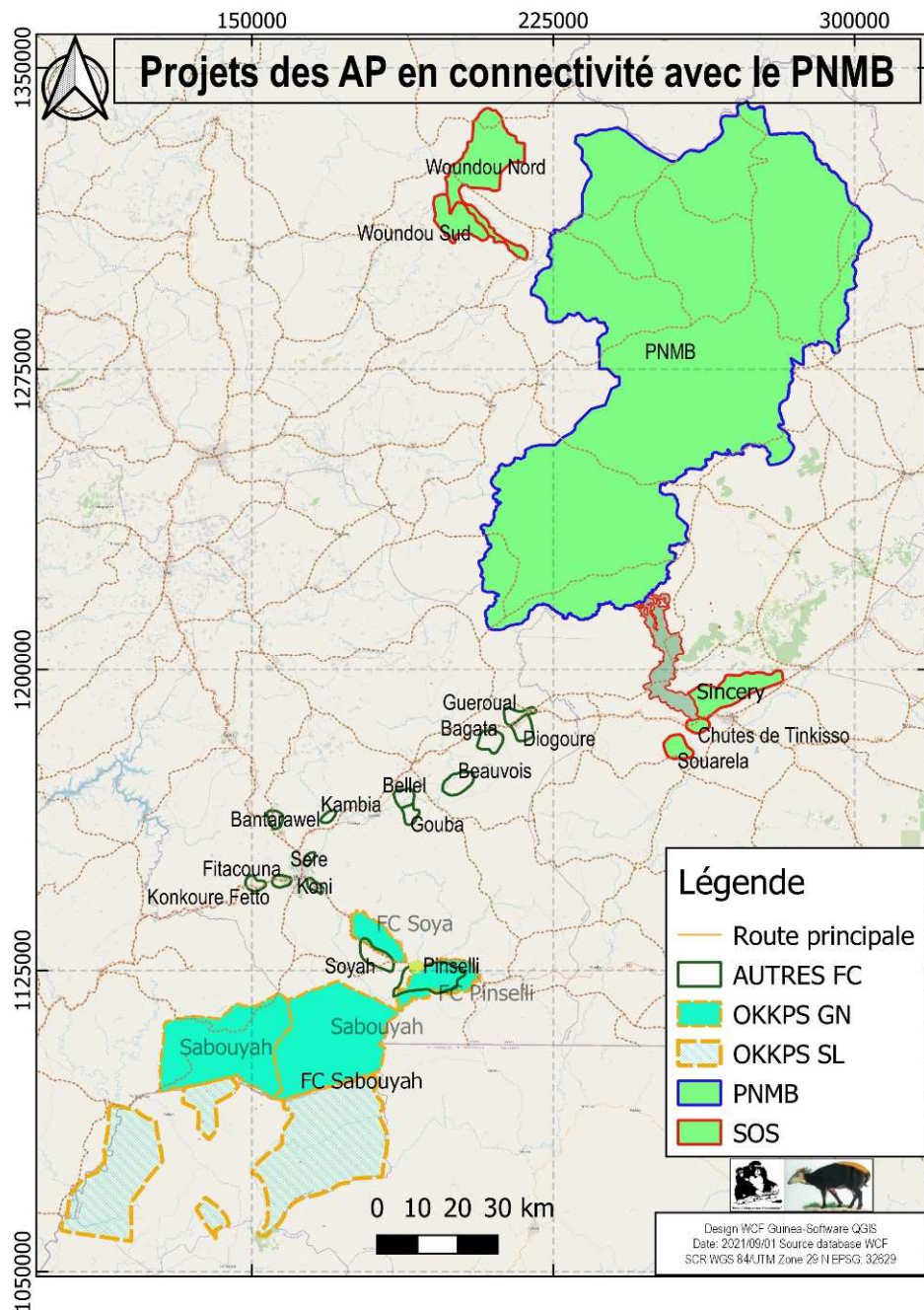
WCF Guinea – Education and awareness in the Moyen-Bafing area



- Sensibilisation through theater reached 10'556 persons,
- 61 radio shows were presented by Radio Tougué, Dabola, Dinguiraye and Koubia,
- 896 children participated in Club PAN and 1061 parents visited the parents days.



WCF Guinea – New project areas close to the Moyen-Bafing National Park

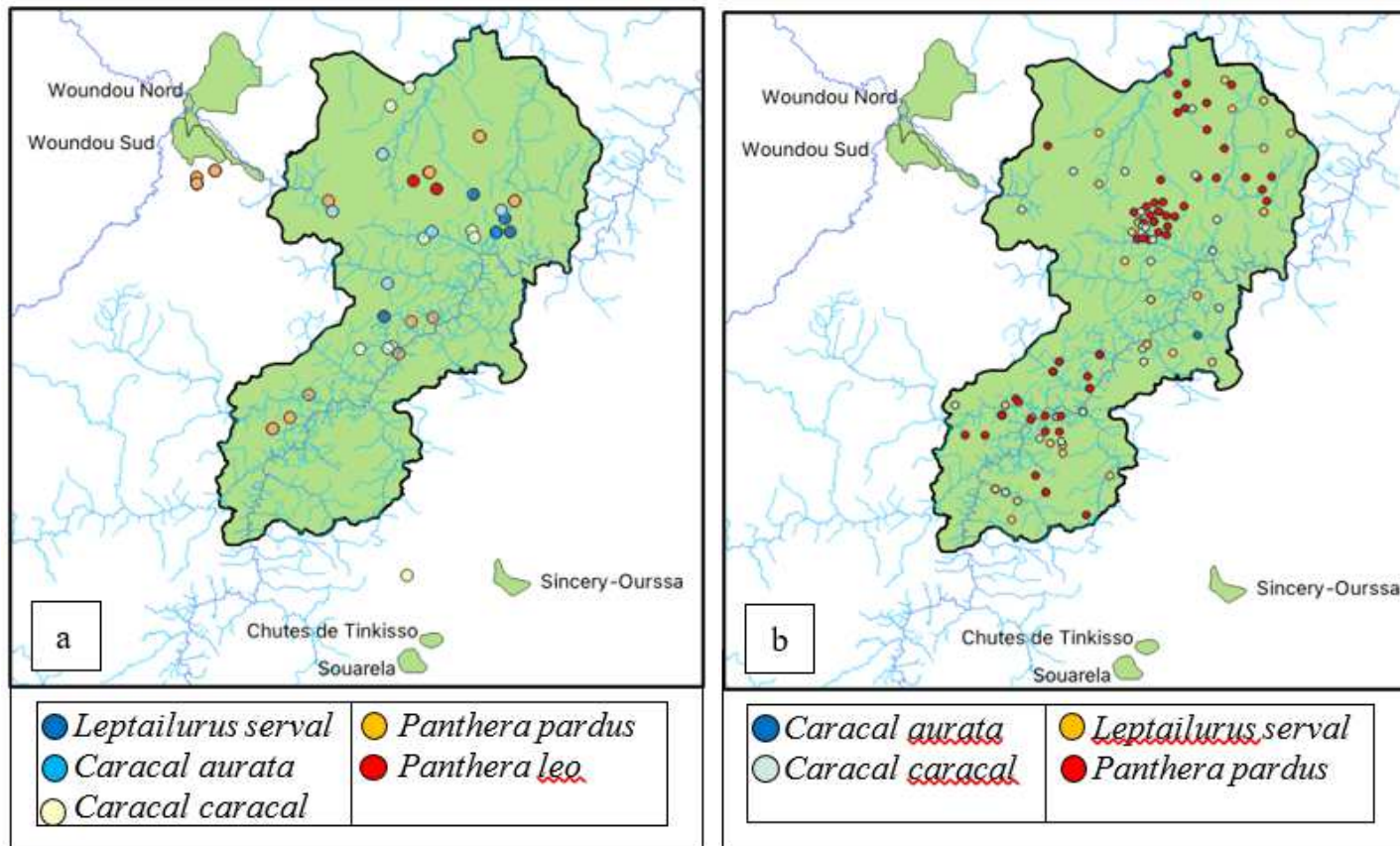


1. Moyen-Bafing National Park (MBNP)
2. IUCN SOS Threatend Species Grant: Enhanced conservation of the leopard (*Panthera pardus*) populations of the Bafing River watershed: MBNP and neighboring classified forests: Woundou Nord, Woundou Sud, Sincery, Chutes de Tinkisso and Souarela
3. Transboundary EU project: Towards a participative, inclusive and sustainable management of the forest landscape complex of Outamba-Kilimi (Sierra Leone), Kuru Hills (Sierra Leone) and Pinselli-Soya (Guinea)

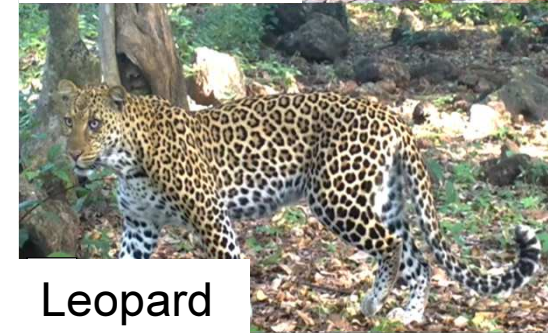


WCF Guinea – IUCN SOS Threatend Species Grant

Monitoring of cat populations and their prey in the Moyen-Bafing National Park (MBNP) and the close classified forests



Distribution of observations of predatory species in the MBNP and its surrounding forests based on
a) direct/indirect observation data and
b) camera trap data.



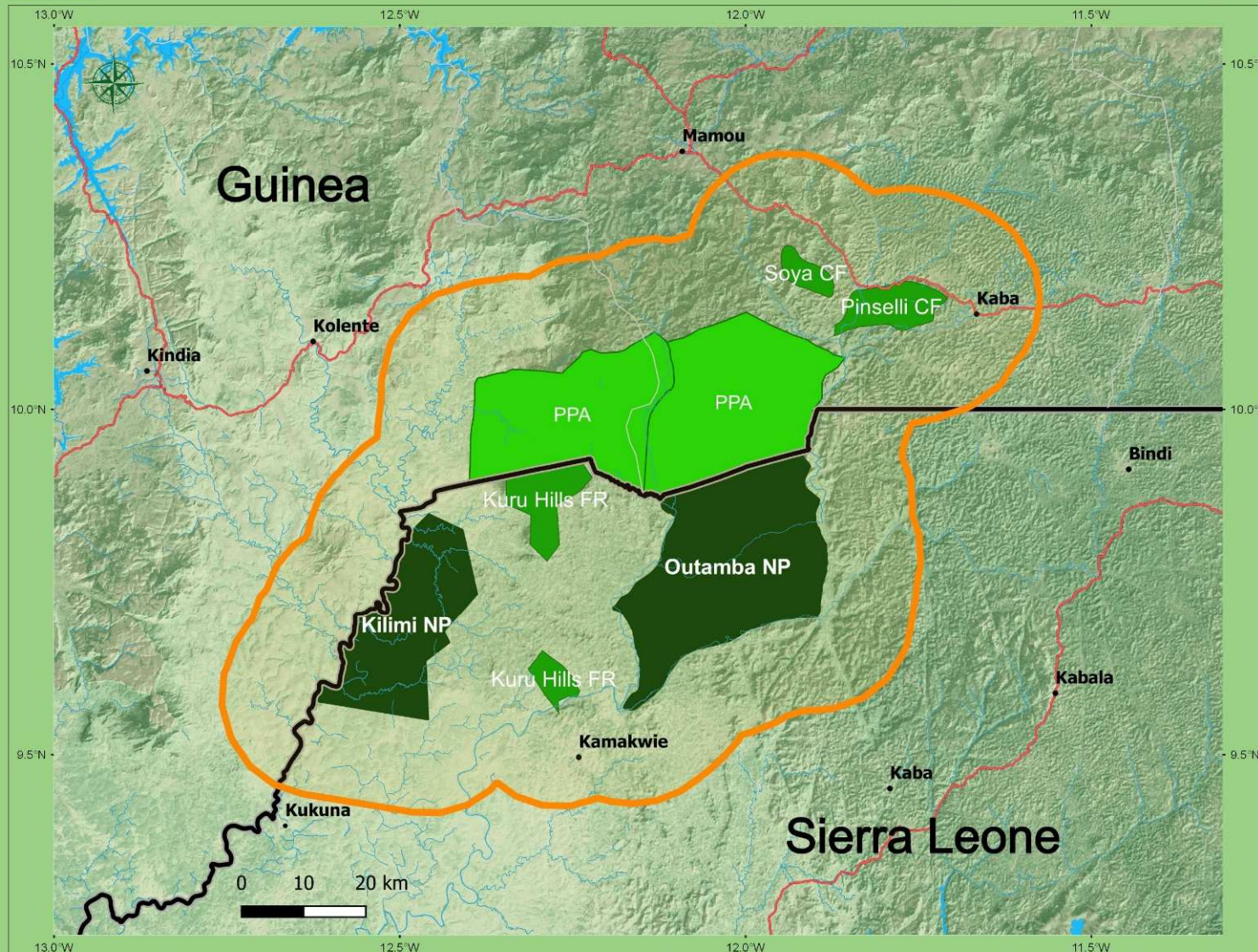
WCF Guinea – Transboundary EU project



Support Program for the Preservation of Forest Ecosystems in West Africa (PAPFor)



Outamba-Kilimi-Kuru Hills-Pinselli-Soya (OKKPS) Priority Landscape



Legend

- Water stream
- Major road
- International border
- Administrative boundary

Conservation areas

- OKKPS PAPFor Landscape
- National Park
- Forest Reserve/Classified Forest
- Proposed Protected Area

The objective of the Support Programme for the Preservation of Forest Ecosystems in West Africa – PAPFor – is the sustainable management of biodiversity, for the benefit of forest communities in West Africa. Funded by the European Union, PAPFor supports local communities and state agencies to efficiently manage their forest landscapes, in and around key Protected Areas in Guinea, Sierra Leone, Liberia, Ivory Coast and Nigeria.

WCF Liberia

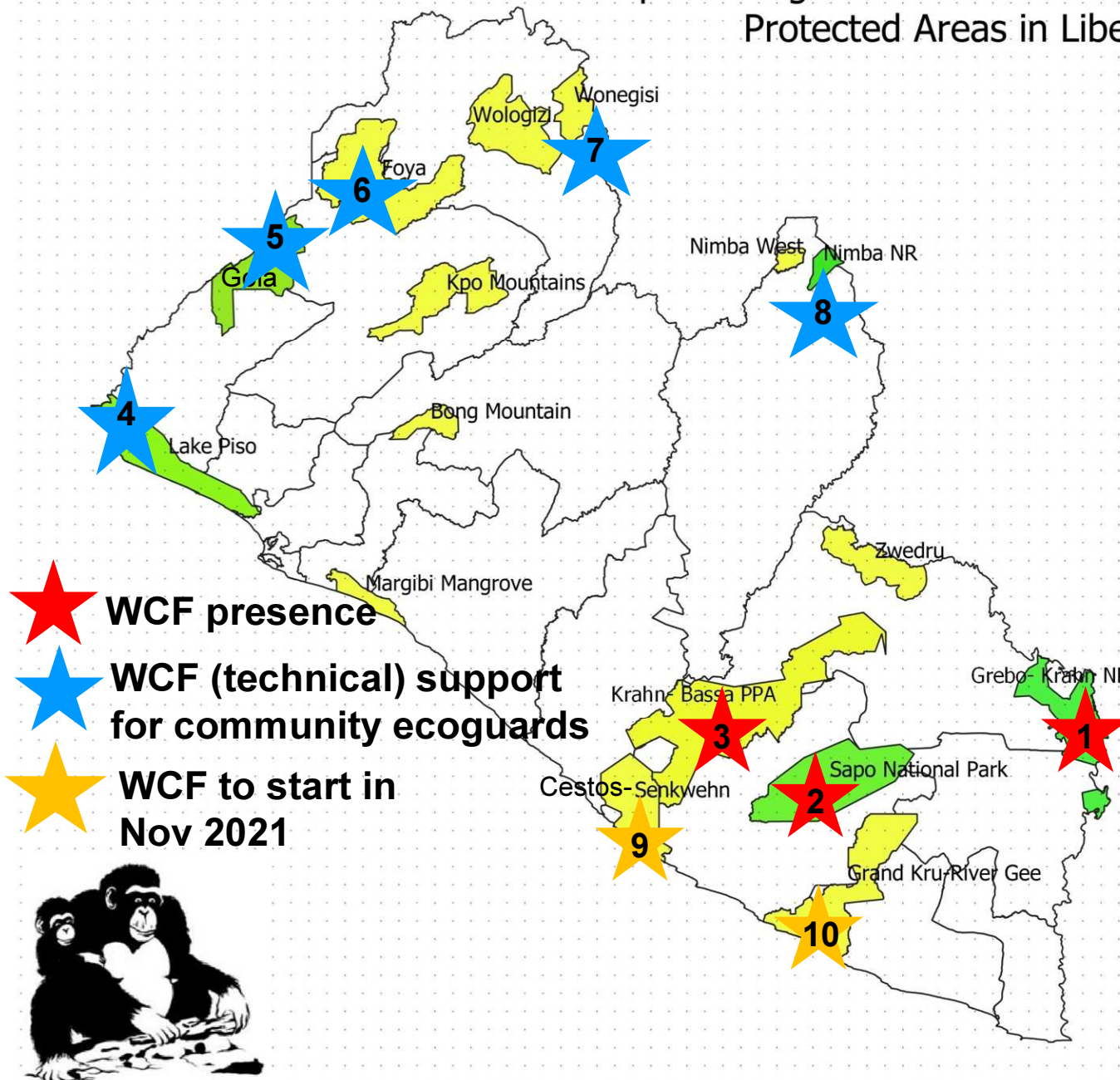


WCF Liberia

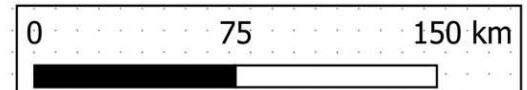
Map showing Protected Areas and Proposed Protected Areas in Liberia

Protected Area

Proposed Protected Area (PPA)



- 1) Grebo-Krahn National Park
- 2) Sapo National Park
- 3) Krahn-Bassa PPA
- 4) Lake Piso Multiple Sustainable Use Reserve
- 5) Gola Forest National Park
- 6) Wonegizi PPA
- 7) Foya PPA
- 8) East Nimba Nature Reserve
- 9) Cestos-Senkwehn PPA
- 10) Grand Kru River Gee PPA



WCF Liberia – Creation and management of Protected Areas

Current main target areas:

- 1) Grebo-Krahn National Park (effective management)
- 2) Sapo National Park (involvement of local communities in management, ecotourism)
- 3) Krahn-Bassa Proposed Protected Area (National Park creation):
 - Local, regional and national consultations (based on Free Prior and Informed Consent),
 - Participatory land use mapping and flagging with communities,
 - Awareness (theater, ecoguards, meetings, radio),
 - Preparation of gazettelement package,
 - Engagement with law makers.



WCF Liberia – National and local community eco-guard programs

- 96 community members (incl. 17 women) in 7 teams at Grebo-Krahn National Park, 12 teams at Sapo National Park and 4 teams at KBPPA,
- Community members trained to patrol in the forest and collect information on wildlife and illegal activities, and to raise awareness,
- Use SMART software for data collection and reporting,
- Support for CEP at other areas (in total ca. 216 active community ecoguards in Liberia) and establishment of national SMART database,
- Communities take ownership in active forest management and provide efficient protection (GKNP: illegal activities reduced by 57% from 2014 to 2020).



WCF Liberia – Biomonitoring

- Combination of new camera trap methodology (448 cameras) and line transects,
- Updated information on chimpanzee population and other key species,
- Local community members trained.



WCF Liberia – Environmental education and awareness

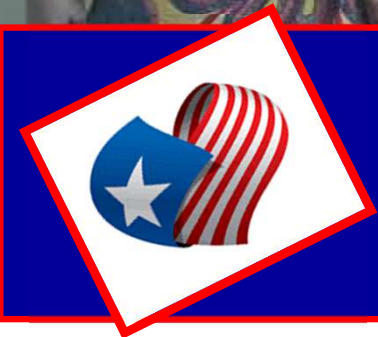
- Professional and amateur theater reached 4851 community members,
- 6 radio shows each 30 days,
- Wildlife Clubs,
- Anti-bushmeat community volunteer program,
- Celebration of special events (World Wildlife Day, World Chimpanzee Day).



WCF Liberia –Awareness and theater



Theater program with 30 women bushmeat sellers in Monrovia and Paynesville who changed business and raise awareness in bushmeat markets.



EX-BUSHMEAT SELLERS DRAMA TEAM

WCF Liberia - Sustainable alternative livelihoods



Fishfarming, 30 fishfarmers, GKNP



Beekeeping, 305 beekeepers, GKNP/ KBPPA



Grebo-Krahn National Park: Lowland rice, cassava, beans and rice & cassava mills, 79 women & 1 man trained, new project starting in 2021 with local partner, training and support for 300 farmers.

WCF Liberia – Community based ecotourism



Tourist guide training, SNP, GKNP, KBPPA



Hospitality and catering training for women from local communities, SNP



Sapo Ecolodge



WCF Liberia – Development of community infrastructure



Focus on hand pump water wells, bridges, schools, and other urgent infrastructure needs in the rural regions of Krahn-Bassa Proposed Protected Area, Grebo-Krahn and Sapo National Park.



WCF Liberia – Fight against Illegal Wildlife Trade

- Support for first national Wildlife Crime Task Force/ joint security and creation of national wildlife crime database,
- Review of the Wildlife Conservation and Protected Area Management Law and development of regulations (incl. updated list of protected species),
- Support for law enforcement activities and trainings,
- Coordination of Law Enforcement and Biomonitoring Sub-committees of Liberia Species Working Group.



WCF Côte d'Ivoire

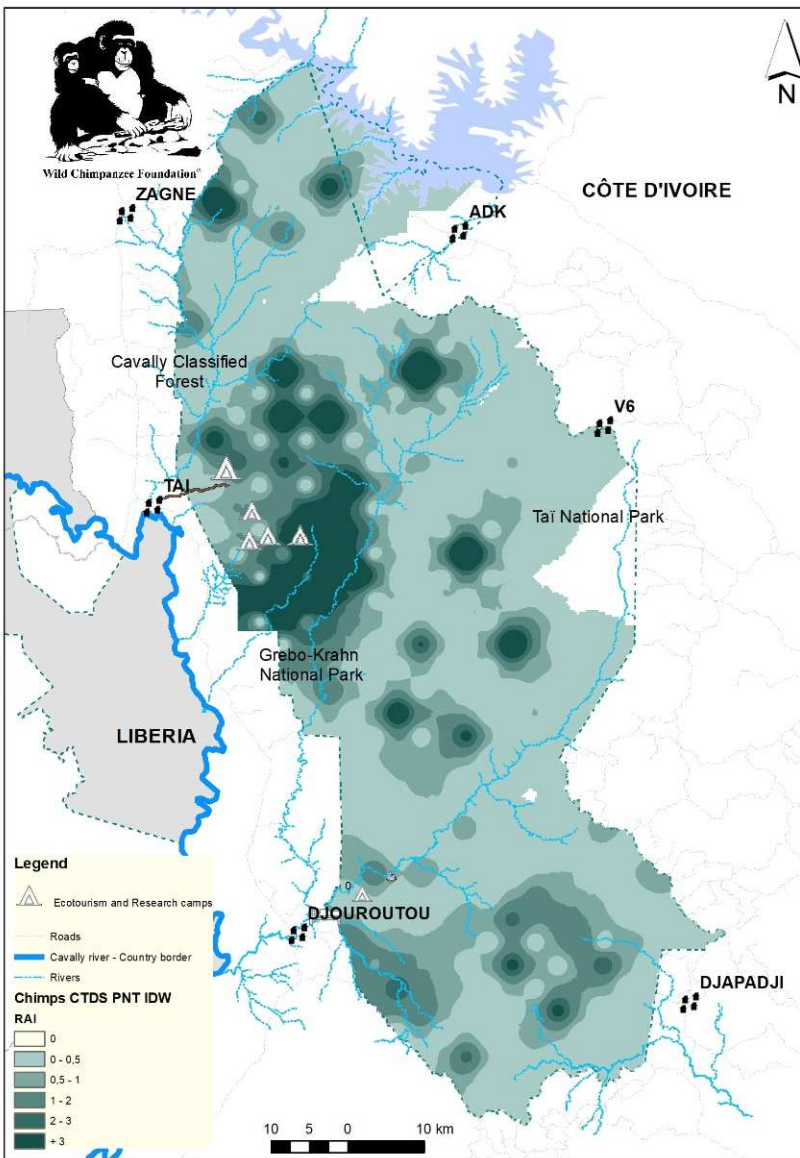


Abidjan



Taï

WCF Côte d'Ivoire – Camera trap monitoring in Taï National Park



Species	Point Estimate	Standard Error	% CV Bootstrap	95% Confidence Interval bootstrap		Ref. Biomonitoring OIPR 2020
Chimpanzees	1 356	516	39.72	536	2 663	376
Elephants	286	70	26.39	166	458	231
Hippopotamus	837	805	26.20	478	1 344	NA
Leopard	70	24	29.07	38	119	NA
Yellow back duiker	596	223	37.37	244	1 218	40 845* all duikers
Jentink duiker	3 223	430	14.05	2 410	4 172	
Zebra duiker	3 435	661	19.82	2 242	4 889	
Maxwell duiker	123 560	14 232	14.70	91 443	164 070	



The chimpanzee population is bigger than what is known from the line transect surveys since 15 years and their presence has been detected with 200 cameras covering most of the Taï National Park.

WCF Côte d'Ivoire – Ecoguards for Taï National Park

- two teams in Ecotourism and Research areas collecting SMART data,
- the teams have covered over 1300 km in the park,
- the encounter rate of illegal activities is 0,22 ind/km.

Signs recorded	Number	Encounter rate
Illegal activities	291	0,22
Chimpanzee	110	0,08
Monkeys	949	0,73
Hippopotamus	98	0,07
Forest elephant	202	0,15



WCF Côte d'Ivoire – Ecoguards for Taï National Park

Urgent fund from Rainforest Rescue for urgent action in Djouroutou

Situation:

The ecotourism site is closed since March 2021, lack of supervision and the ecoguides are discouraged, widespread artisanal gold mining in Djouroutou leading to increasing poaching.

Action:

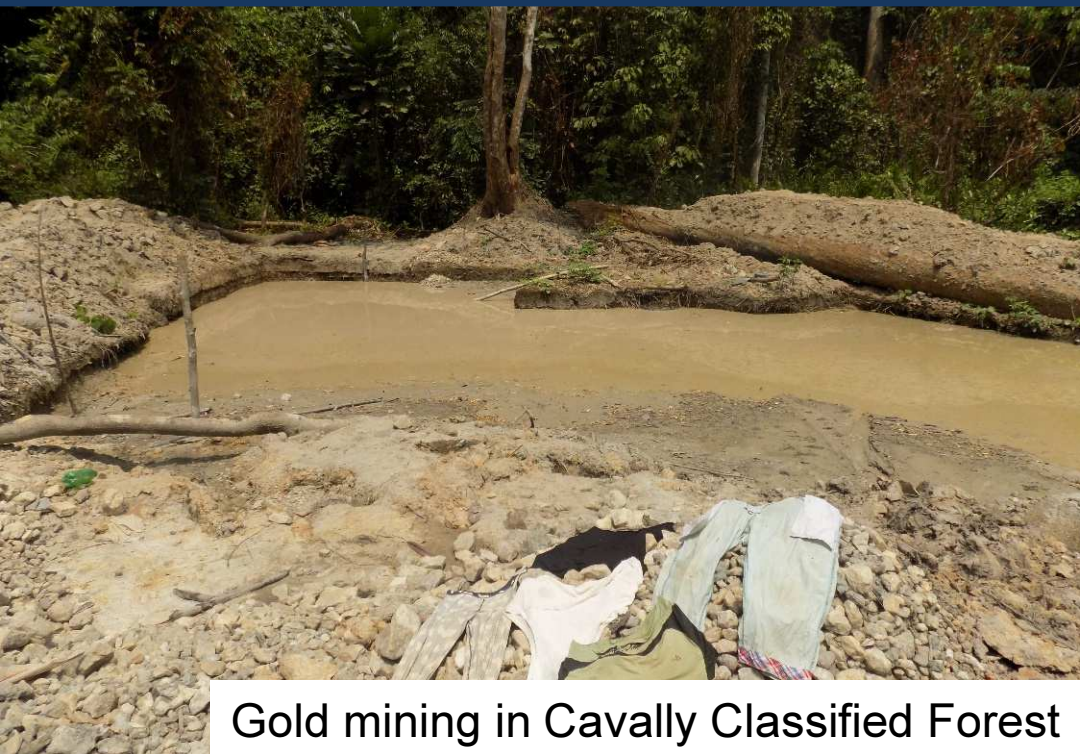
4-month support in Djouroutou with supervision of the ecoguides and anti-poaching patrols from June to August.
1 arrest of a gold miner by an ecoguide
1 mission of OIPR – seizure of materials.



Illegal gold mining site discovered by the team during the second mission in July 2021, Taï National Park, sector of Djouroutou



WCF Côte d'Ivoire – Gold mining



Gold mining in Cavally Classified Forest



Gold mining on the Hana river

Gold mining on Cavally river

- Gold mining is present in protected areas and on rivers (TNP, CCF, GKNP, SNP, Cavally river, Hana river, etc.)
- wide and organized corruption prevents any rapid government reaction
- miners come from neighboring countries and increase the population around the protected areas
- Demand for bushmeat increases
- Gold miners pay more money for bushmeat
- Communities consume less fish from polluted waters



Taï, A7, Côte d'Ivoire

Latitude

5.8748854°

Longitude

-7.455884°

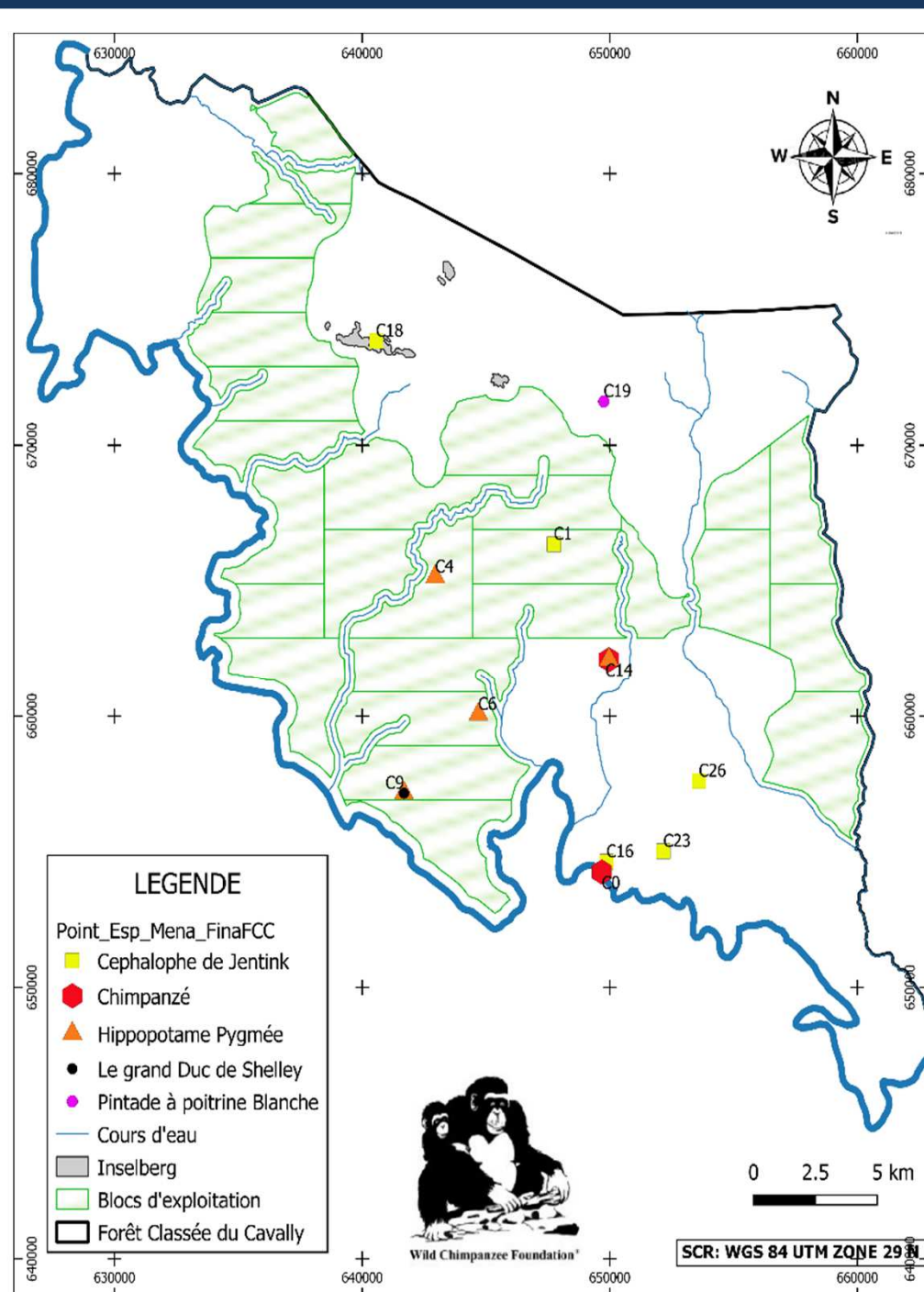
Local 12:40:18 PM

GMT 12:40:18 PM

Altitude 0 meters

vendredi, 26-06-2020

WCF Côte d'Ivoire – Monitoring & law enforcement in Cavally Classified Forest



Since 2020: 100% of SODEFOR surveillance patrols are supported by WCF:

- 12 missions, i.e. 205 days of presence in the forest and 3,583 ha of forest rehabilitated,
- Deforestation has slowed down but not stopped.

A rapid survey revealed:

- 21 mammal species present (compared to 48 in TNP),
- presence of chimpanzees, pygmy hippos, and Jentink duikers.

WCF Côte d'Ivoire – Ecotourism in Taï National Park

Ecotourism Taï reopened in May 2021 after more than one year of Corona crisis closure.

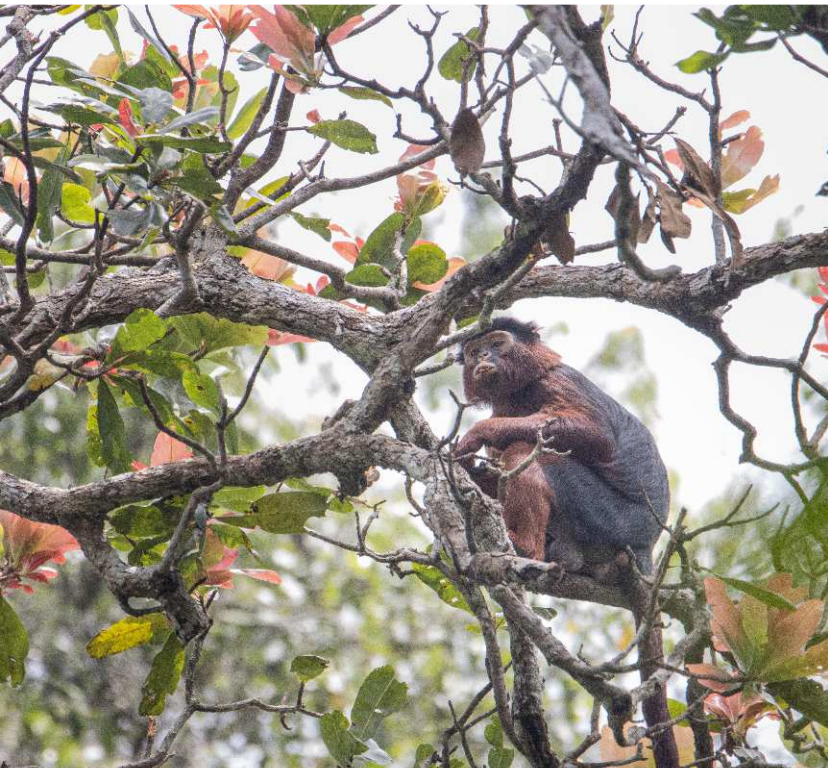
The Taï Ecotourism site has reopened with **reinforced sanitary measures**:

- a negative COVID test and a temperature below 38°C,
- mandatory wearing of masks,
- increased distance to the animals (from 7 to 10m).



From May to August 2021
28 tourists visited the park.

WCF Côte d'Ivoire – Ecotourism in Taï National Park

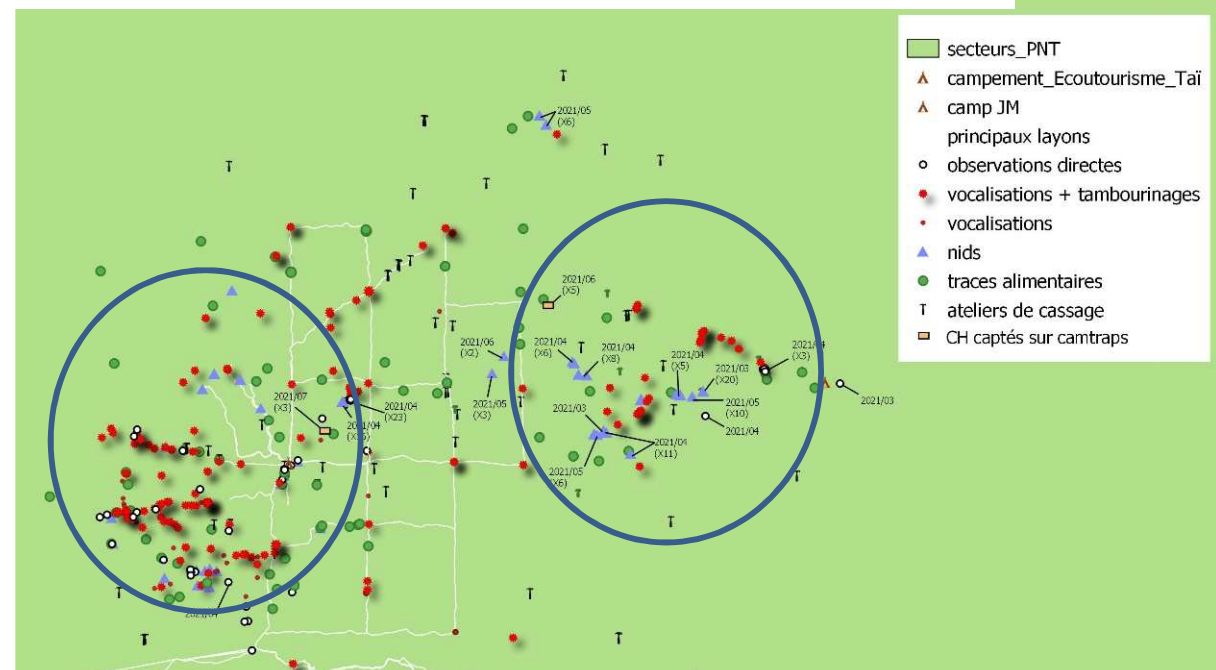


The habituated groups of Mangabeys and red colobus are stable. Between November 2020 and February 2021 14 Mangabeys were born.

For the chimpanzee habituation:

- We integrated camera traps to identify the territory and size of the groups,
- 3 new assistants were recruited,
- 23 nests were counted next to the camp,
- 5 chimpanzees were observed East of the camp

Chimpanzee presence in the ecotourism area



WCF Côte d'Ivoire – Ecotourism in Taï National Park

A new village proposing Bed & Breakfast for tourists: **Daobly**

The community built 3 traditional huts, without funding from the WCF.

WCF is supporting them in furnishing the huts, giving priority to local know-how.

The village wishes to show tourists the dances of Guéré, Malinké and Burkinabe women.



WCF Côte d'Ivoire – Education and awareness in the Taï region

Awareness sessions focused on two topics :

- Benefits of conservation for the local communities,
- Zoonoses, their causes and how to prevent them in collaboration with TCP/RKI/OIPR.

A total of 767 persons participated in these sessions.

A "green class" week in June 2021 was organized with the college of Taï including a 1-day visit in the park.



Grants and partners:



Thank you!



89°F 31°C

04-30-2020 15:45:21