



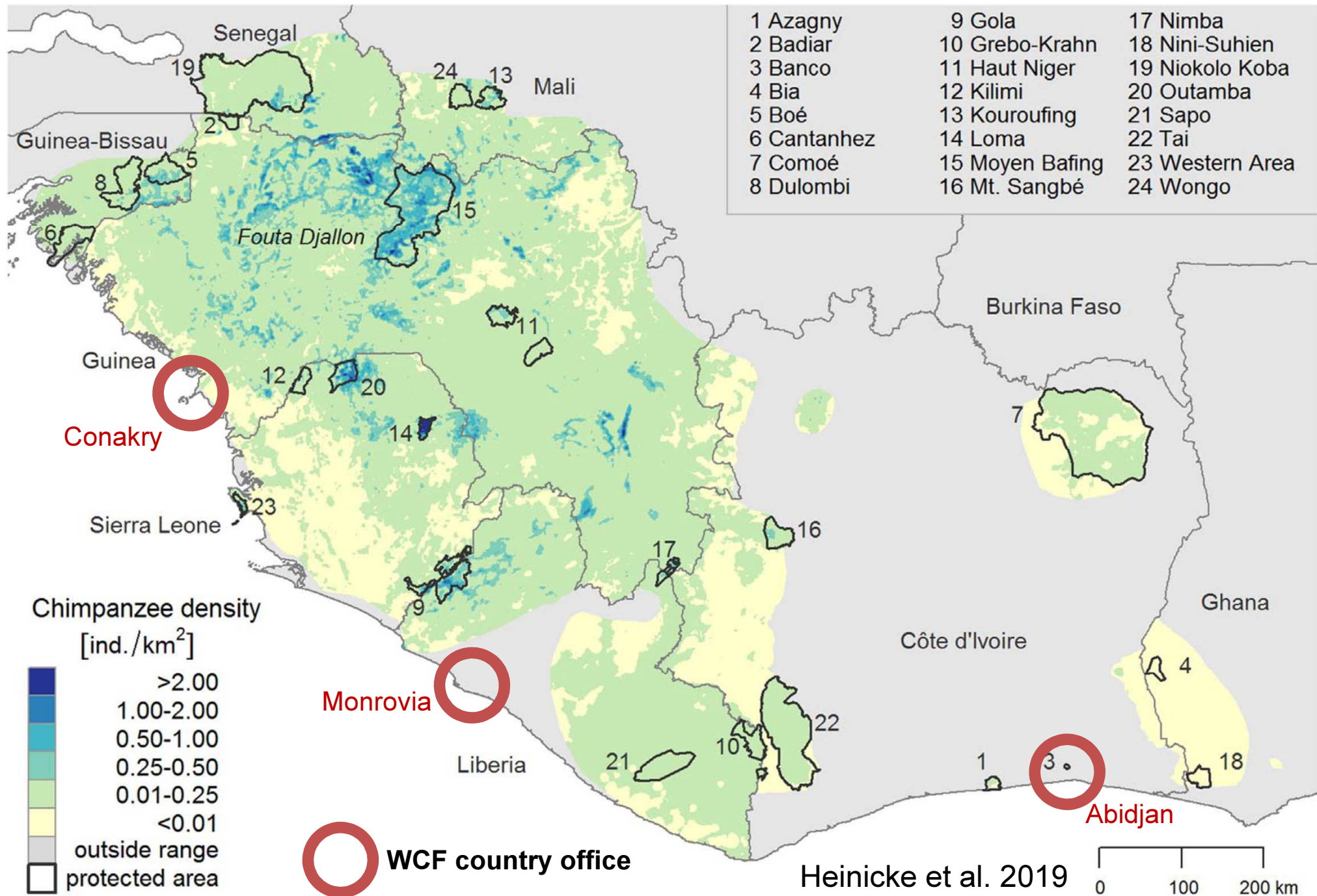
Annual Report 2020



www.wildchimps.org

© Tobias Deschner

Distribution and density of chimpanzees in West Africa



Strategic Plan of the Wild Chimpanzee Foundation

Goal

Protection of wild chimpanzees and their habitats

Strategic objectives

Strengthen support for conservation of chimpanzees and habitat

Strengthen protection of chimpanzee habitat

Strengthen sustainable management of chimpanzee and habitat

Develop research

Project objectives

Raise Awareness

Alternative benefit for populations

Increase environment interest in policy decision

Follow population trends

Improved protected area management

Sustainable funding for PAs

Sustainable logging practices

Sustainable mining practices

Understand processes affecting population trends

Activities

Environment education

Alternative sustainable livelihood

Advocacy

Monitoring

Law enforcement

Ecotourism

Monitoring logging practices

Monitoring mining practices

Research

Theatre

Film

Newsletter

Discussion round

Club PAN

Pilot project with populations

Training of locals

Employment for locals

Lobbying by decision makers

Awareness meetings

Consultancy for inclusions of environment issues

Regular report of animal and habitat status
Impact of law enforcement
Impact of bushmeat hunting

Training of game wardens
Establishment of management plan
Improvement of PA patrols
Better application of law in courts

Entrance fee
Nature trails
Animal viewing

Impact of logging practices
Best practices management plan
Capacity building

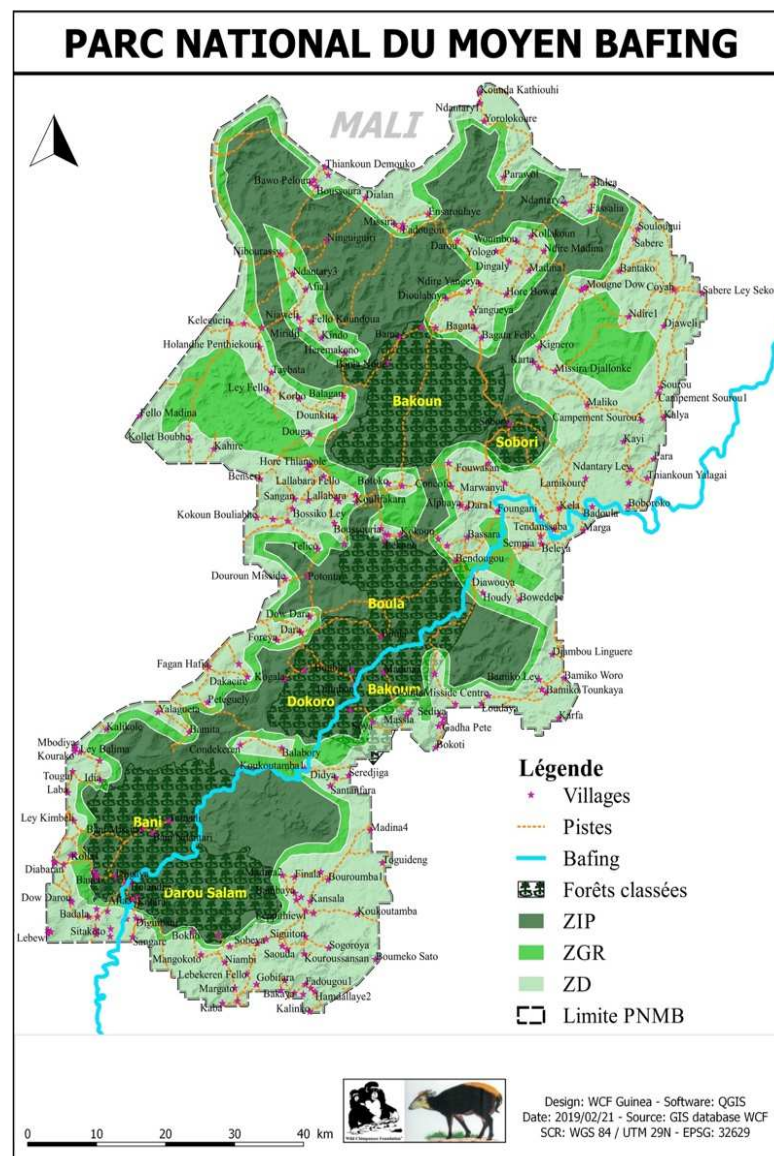
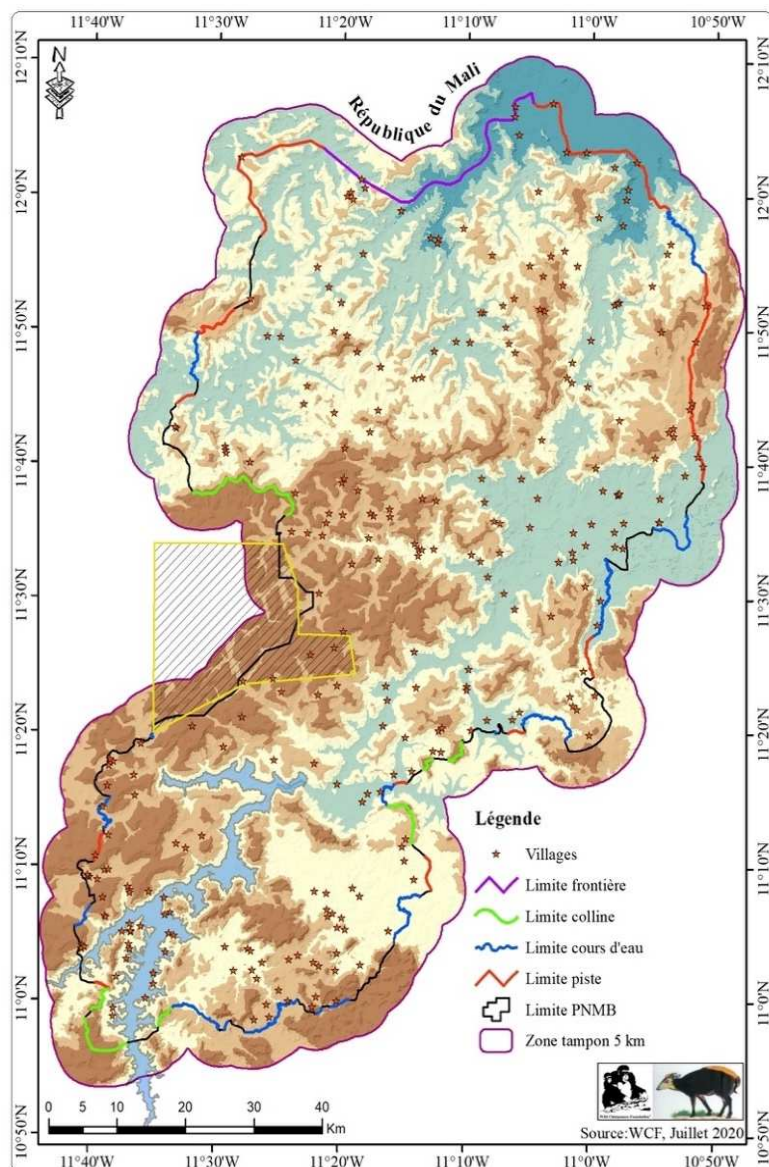
Impact of mining practices
Mitigation and offset management plan
Capacity building

New monitoring tools
New evaluation tools
Capacity building
Chimpanzee mortality study - disease

WCF Guinea



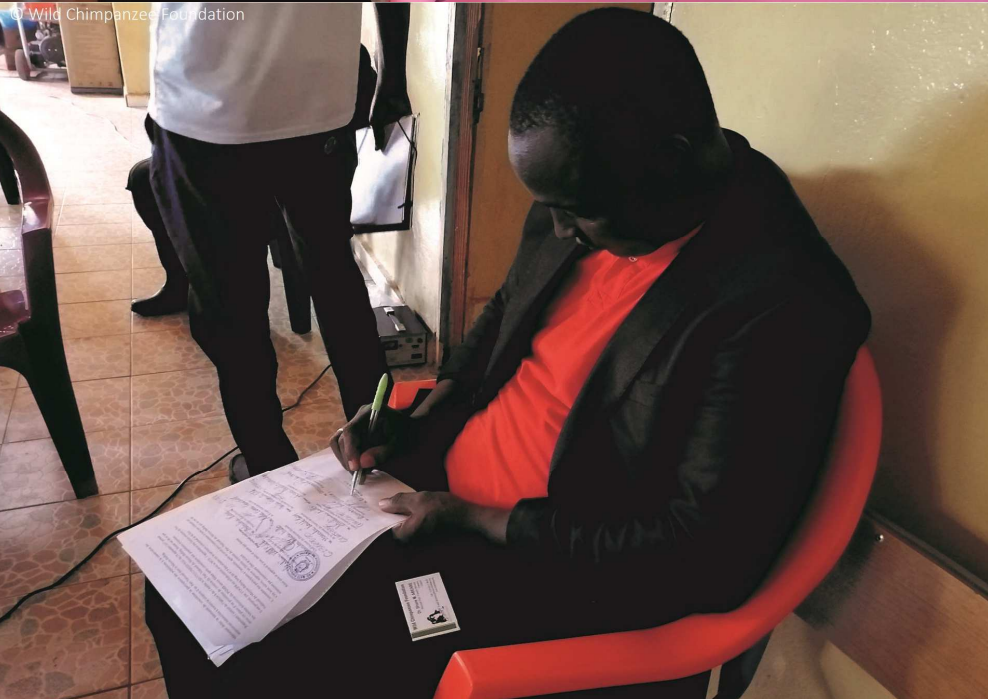
WCF Guinea - Creation of the Moyen-Bafing National Park



Redefined external boundaries of the Moyen-Bafing National Park, including the Toubal mining concession (yellow polygon); the physical features that form the basis of the different boundary sections are designated by segments of coloured lines (boundary - purple, mountains/hills - green, waterways - blue, and roads/trails - red)

Former boundaries of the Moyen-Bafing National Park

WCF Guinea - Creation of the Moyen-Bafing National Park



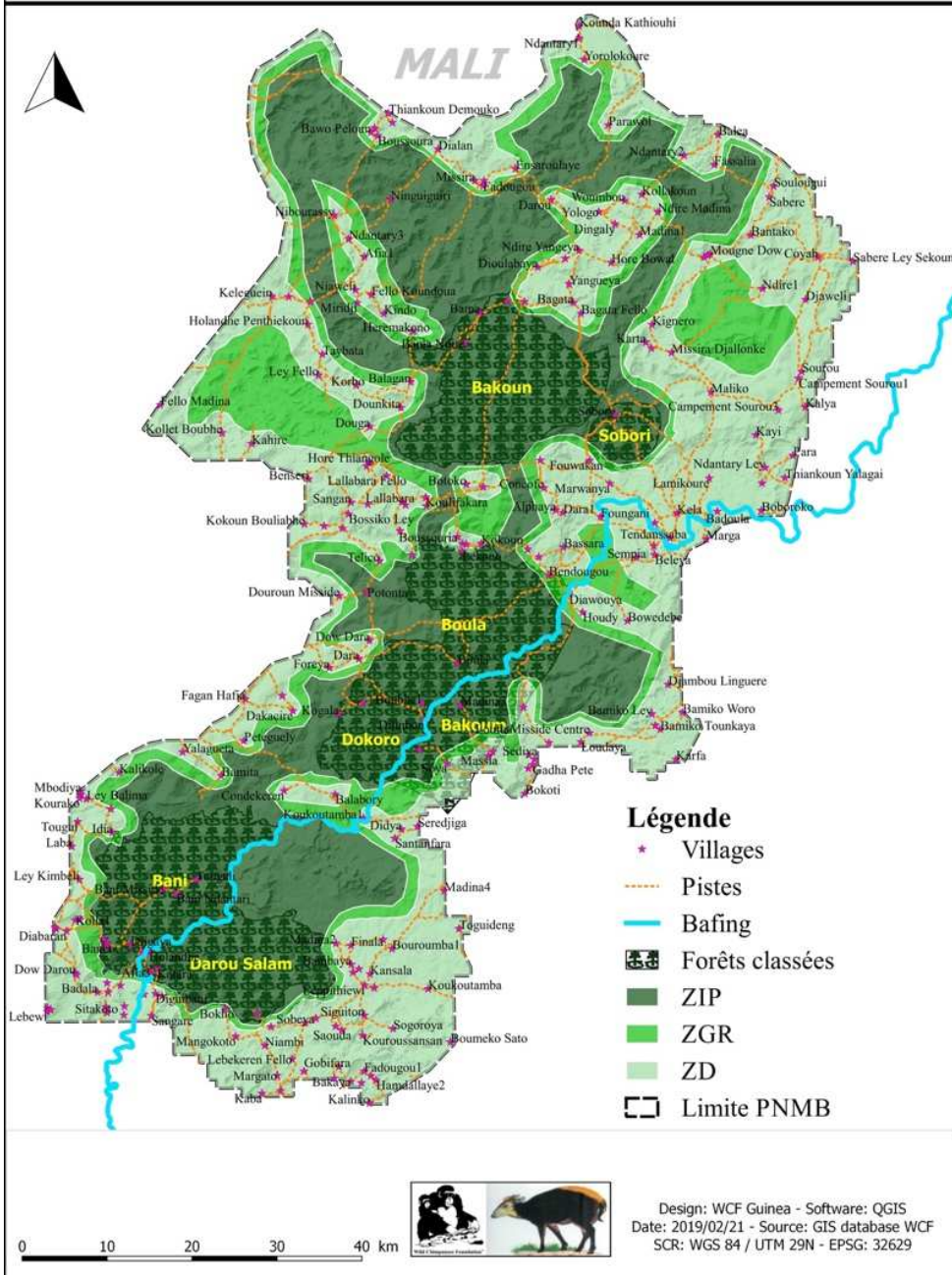
Communities approve the boundaries of the Moyen-Bafing National Park

In August 2020, the fourth framework of community consultations mobilized all 15 communes of the park. At the end, we retained the community approval of the external limits of the park in a free and enlightened way through the signature of 15 acts of approval.



WCF Guinea - Creation of the Moyen-Bafing National Park

PARC NATIONAL DU MOYEN BAFING



Largest West African chimpanzee population (over 5'000 chimpanzees) – critically endangered (IUCN 2017)

Inhabited by local communities of 36'000 persons

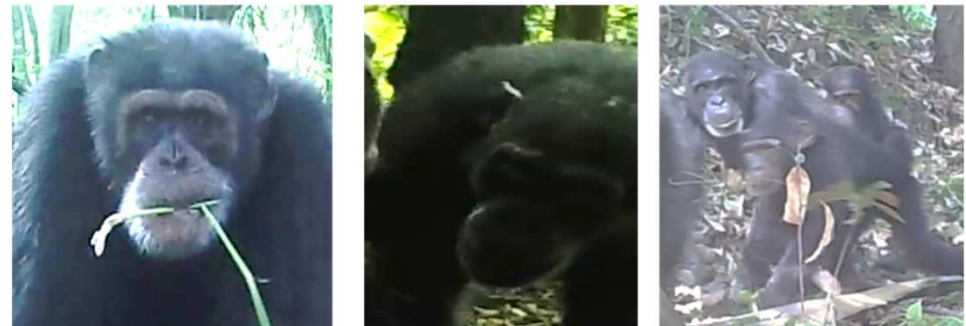
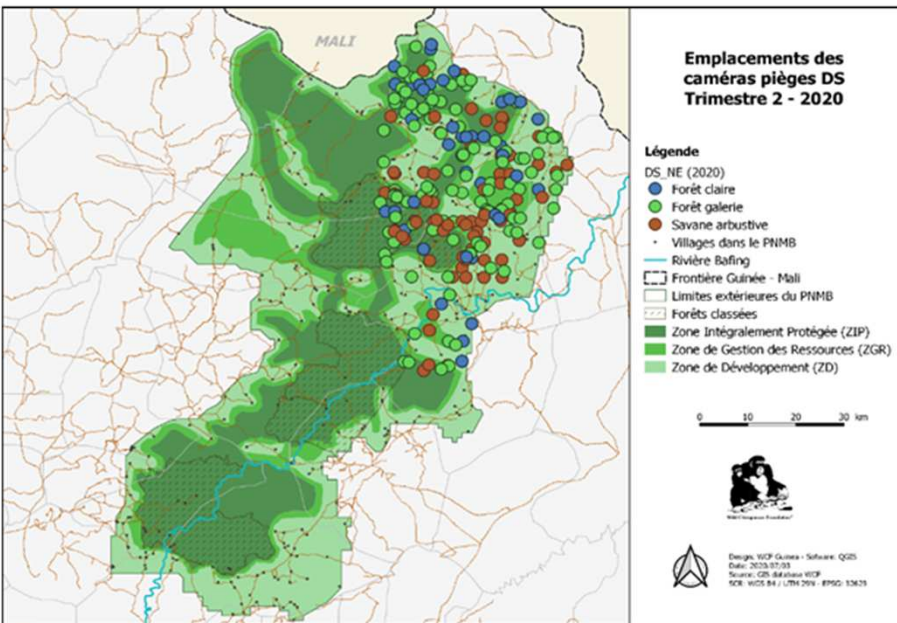
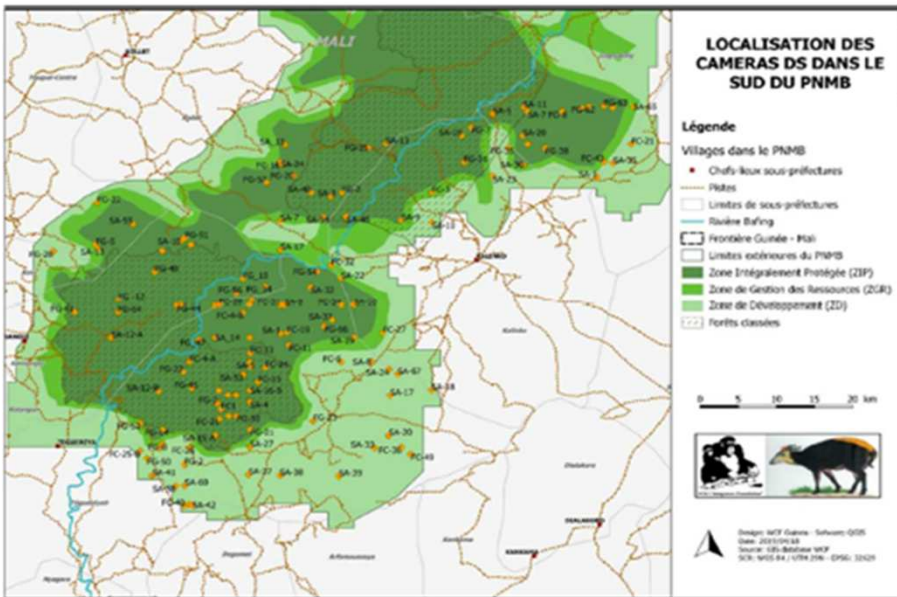
Biodiversity offset of 2 mining companies under an IFC scheme



WCF Guinea - Camera trap monitoring in Moyen-Bafing National Park

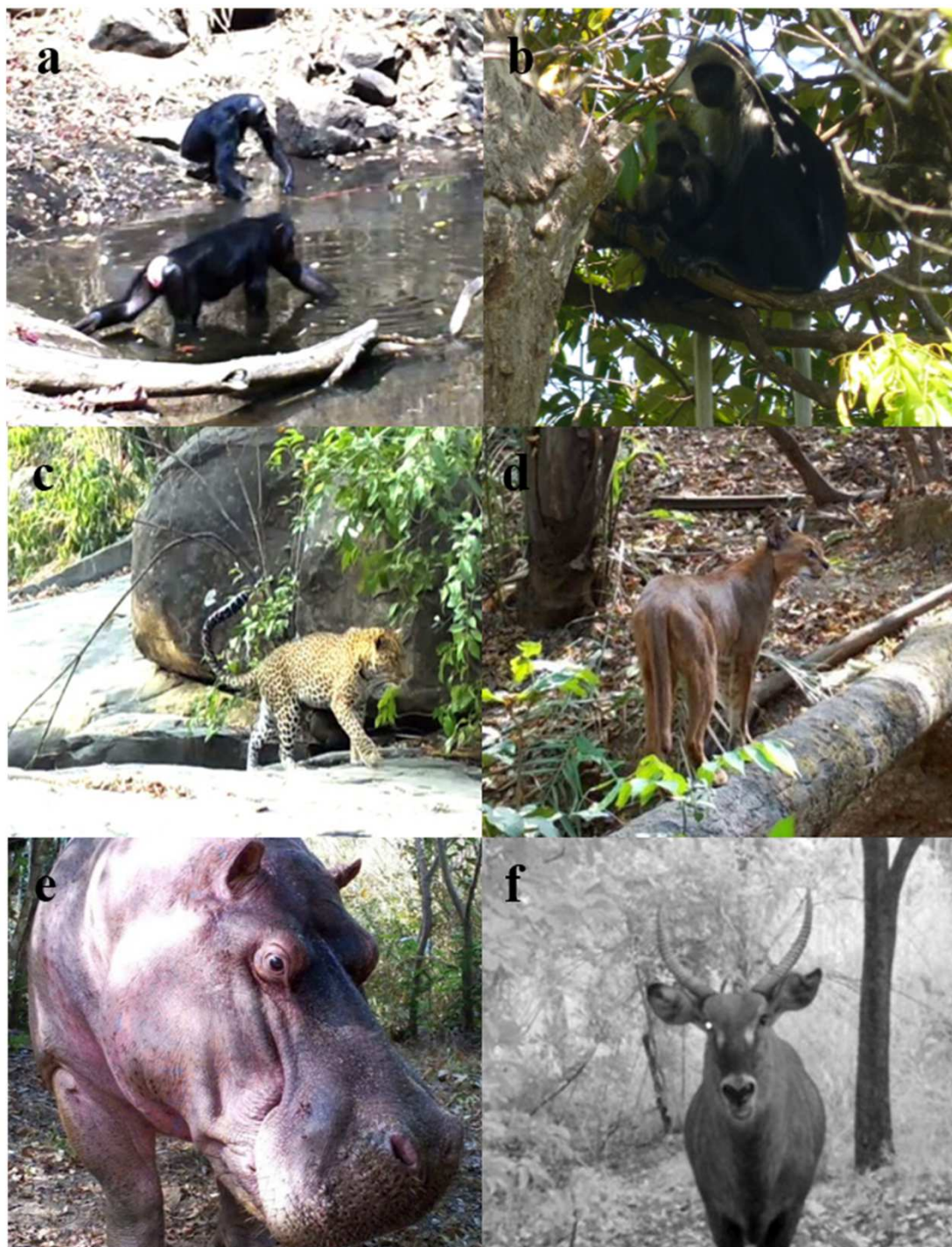
Biomonitoring with camera traps systematically set up in the Moyen-Bafing National Park.

The identification of chimpanzees is ongoing.



Top: placement of cameras in the southern zone of the park during the period February 2019 - February 2020;
Bottom: cameras were moved afterwards to the north-eastern zone

WCF Guinea - Camera trap monitoring in Moyen-Bafing National Park



Screenshots from camera trap videos:
a) Critically endangered West African chimpanzees fishing for algae,
b) Endangered black and white colobus,
c) Endangered leopard,
d) Caracal,
e) Endangered hippopotamus,
f) Cobe,
g) Hyena,
h) Vulnerable lion.



WCF Guinea – Law enforcement in the Moyen-Bafing National Park

© Wild Chimpanzee Foundation



35 community eco-guards and 21 agents from the Office Guinéenne des Parcs et Réserves (OGPR) patrolled in the park for 3 missions of 21 days each. They covered 88% of the park and recorded 8434 direct and indirect observations of fauna and illegal human activities, including 1487 signs of chimpanzees, 3 of lions, 34 of hippopotamus, 5 of leopards, 15 of buffalos, and 3346 of warthogs. 495 human activities were observed such as bush-meat hunting.

WCF Guinea – Law enforcement in the Moyen-Bafing National Park

© Wild Chimpanzee Foundation

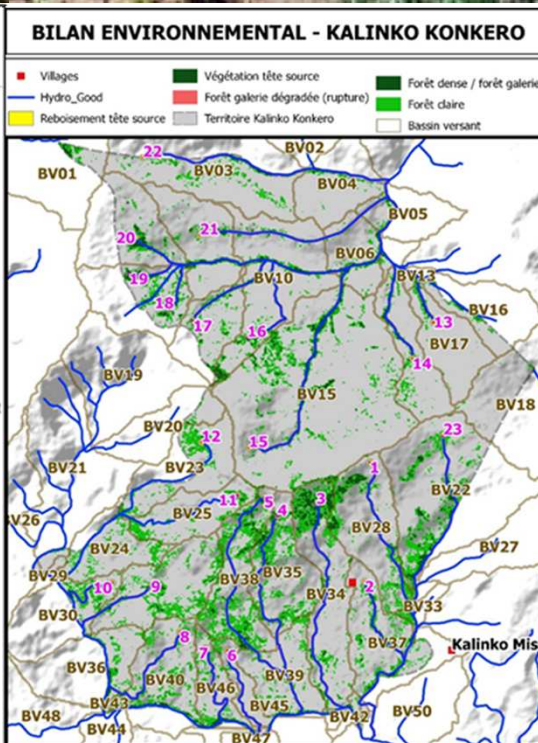
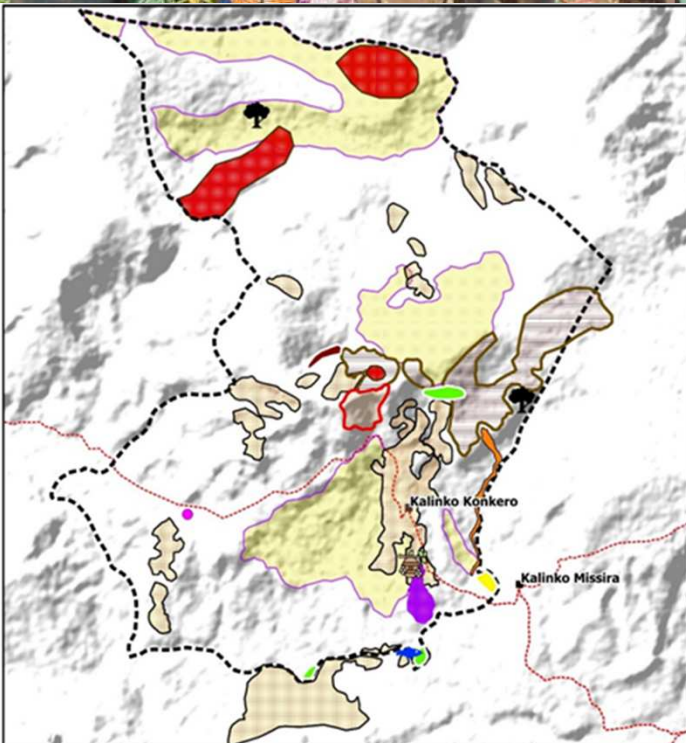


Training of 11 law enforcement agents for the MBNP from 22 to 24/09/2020 in Labé.

© Wild Chimpanzee Foundation



WCF Guinea - Creation of the Moyen-Bafing National Park



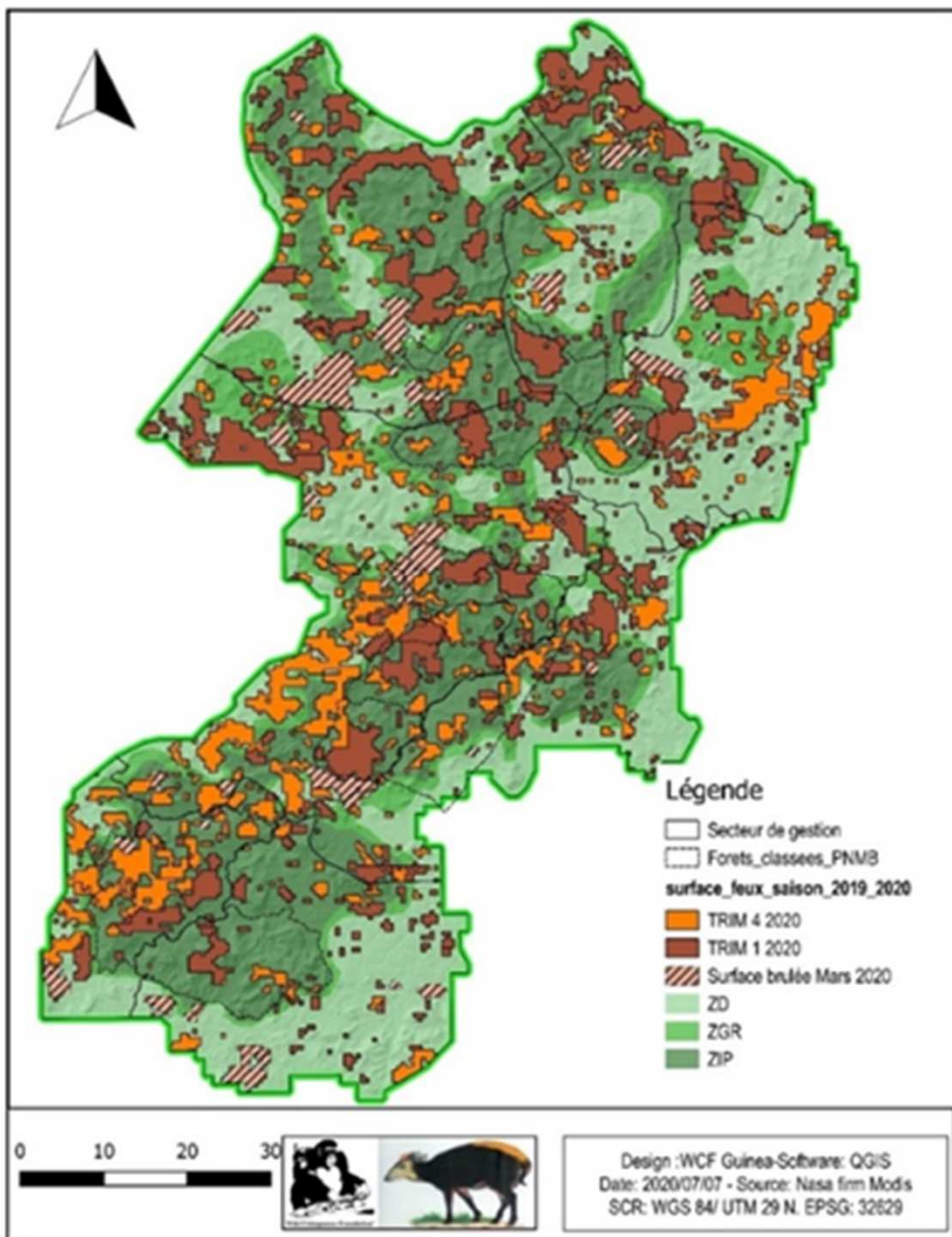
ID	Sup_BV	PD	FC	Tot_forêt	%forêt/BV	Sup_nature	%nature/BV	ID	Sup_ha
BV01	216.32	1.31	2.08	3.39	1.57%	0.01	0.00%	1	0.5
BV02	105.33	0	0	0	0.00%	8.01	7.60%	2	0.48
BV03	265.71	2.43	13.04	15.47	5.82%	4.05	1.52%	3	0.13
BV04	94.19	0.58	2.74	3.32	3.52%	4.18	4.44%	4	0.33
BV05	65.82	0.52	1.85	2.37	3.60%	3.68	5.59%	5	0.35
BV06	63.76	4.02	5.46	9.48	14.87%	0.28	0.44%	6	0.5
BV07	15.55	0.27	0.5	0.77	4.95%	2.03	13.05%	7	0.5
BV08	121.48	4.34	7.23	11.57	9.52%	2.33	1.92%	8	0.5
BV09	105.07	3.78	5.74	9.52	9.06%	12.69	12.08%	9	0.23
BV10	175.73	8.48	17.31	25.79	14.68%	4.13	2.35%	10	0.5
BV11	88.16	2.38	8.86	11.24	12.75%	2.86	3.24%	11	0.41
BV12	78.35	1.96	8.63	10.59	13.52%	0.11	0.14%	12	0.5
BV13	8.57	0.42	0.48	0.9	10.50%	3.05	35.59%	13	0.5
BV14	113.61	6.88	13.62	20.5	18.04%	5.8	5.11%	14	0.5
BV15	475.48	15.4	42.01	57.41	12.07%	0.01	0.00%	15	0.5
BV16	91.22	1.28	2.71	3.99	4.37%	1.53	1.68%	16	0.21
BV17	85.13	1.32	3.76	5.08	5.97%	25.86	30.38%	17	0.4
BV18	652.19	0.07	0.76	0.83	0.13%	1.05	0.16%	18	0.35
BV19	173.97	0.01	0.02	0.03	0.02%	0.22	0.13%	19	0.07
BV20	80.07	0.14	0.95	1.09	1.36%	0	0.00%	20	0.31
BV21	214.64	0.2	0.62	0.82	0.38%	6.02	2.80%		
BV22	269.92	8.88	29.81	38.69	14.33%	0	0.00%		
BV23	110.48	1.01	13.16	14.17	12.83%	0	0.00%		
BV24	79.19	0.66	13.02	13.68	17.27%	0	0.00%		
BV25	80.16	0.94	12.05	12.99	16.21%	0	0.00%		
BV26	113.57	0	0.08	0.08	0.07%	0.08	0.07%		
BV27	97.1	0.004	0	0	0.00%	8.49	8.74%		
BV28	129.8	6.32	23.33	29.65	22.84%	0	0.00%		
BV29	8.48	0	0.24	0.24	2.83%	4.31	50.83%		
BV30	106.38	0.91	11.29	12.2	11.47%	0.74	0.70%		

Reboisement par tête de source
Sup. totale = 9,16 ha

0.5 0 0.5 1 1.5 2 Km

WCF Guinea - Creation of the Moyen-Bafing National Park

Suivi trimestriel de la surface des feux



Bushfires are the major threat to the Moyen-Bafing National Park.

Fire is used to collect honey and to do agriculture.

We monitor the fires in the park.



WCF Guinea - Creation of the Moyen-Bafing National Park



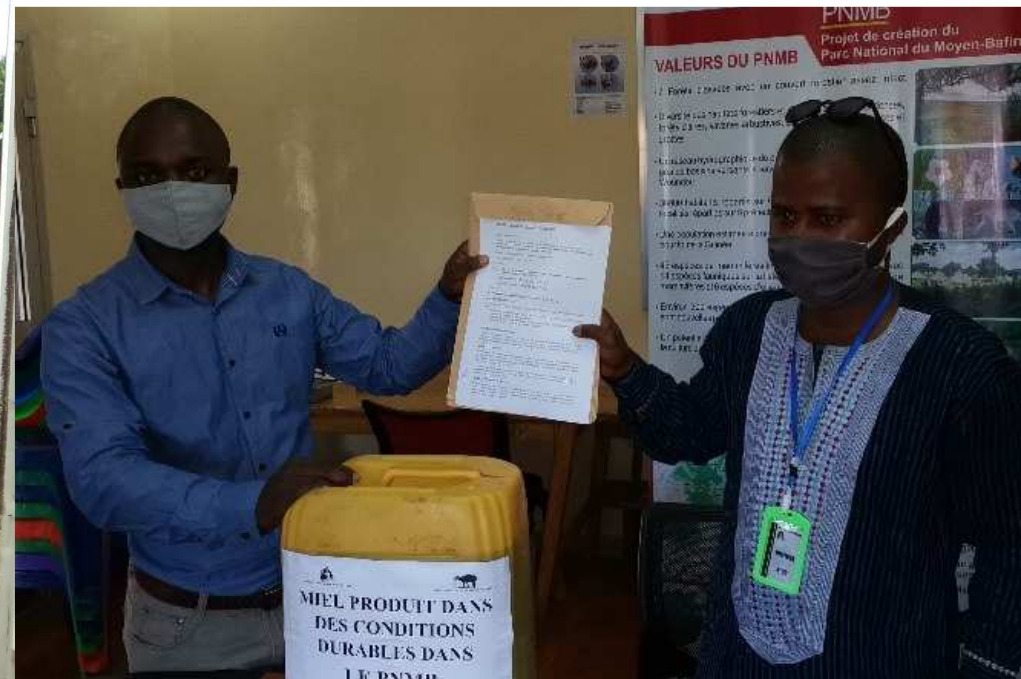
Reforestation and Assisted Natural Regeneration:

- 12 farmer leaders implement Assisted Natural Regeneration in six villages,
- in 2020, 8204 native plants were donated and planted to four communes of the park: Tougué, Kansangui, Kollet and Kouratongo.



WCF Guinea - Creation of the Moyen-Bafing National Park

WCF supports the local population in their socio-economic development that includes the improvement of agricultural practices, and the development of sustainable honey production techniques in order to increase community income by protecting the park at the same time. More than 100l of MBNP honey are already sold on the markets of Labé.



WCF Guinea - Creation of the Moyen-Bafing National Park



© Wild Chimpanzee Foundation

In 2020, **11 infrastructure projects** dedicated to the community development in the park were realized:

- water source for Nguessawoula;
- water source and drilling of borehole at Baridonde and Fello Koundoua Centre;
- construction of a borehole in Kalinko Konkero and in Ley Kimbeli;
- rehabilitation of a well in Dara;
- construction of a market shed in Bellakoure;
- construction of a honey storage warehouse in Laffa Boubhe;
- fencing of a 17 ha plain in Lallabara.



© Wild Chimpanzee Foundation



© Wild Chimpanzee Foundation

WCF – Third World Chimpanzee Day, 14 July 2020



On that day the WCF Guinea team visited the Governor and the Prefect of Labé, to donate framed photographs of the chimpanzees living in the Moyen-Bafing National Park and to present the recent WCF activities in the park. The authorities were very pleased with the initiative, reiterated their unconditional commitment to support the project in achieving its objectives.



WCF Guinea – Club P.A.N.



In 2020, WCF increased Club P.A.N. to ten schools in the Moyen-Bafing region with **814 participating children**.

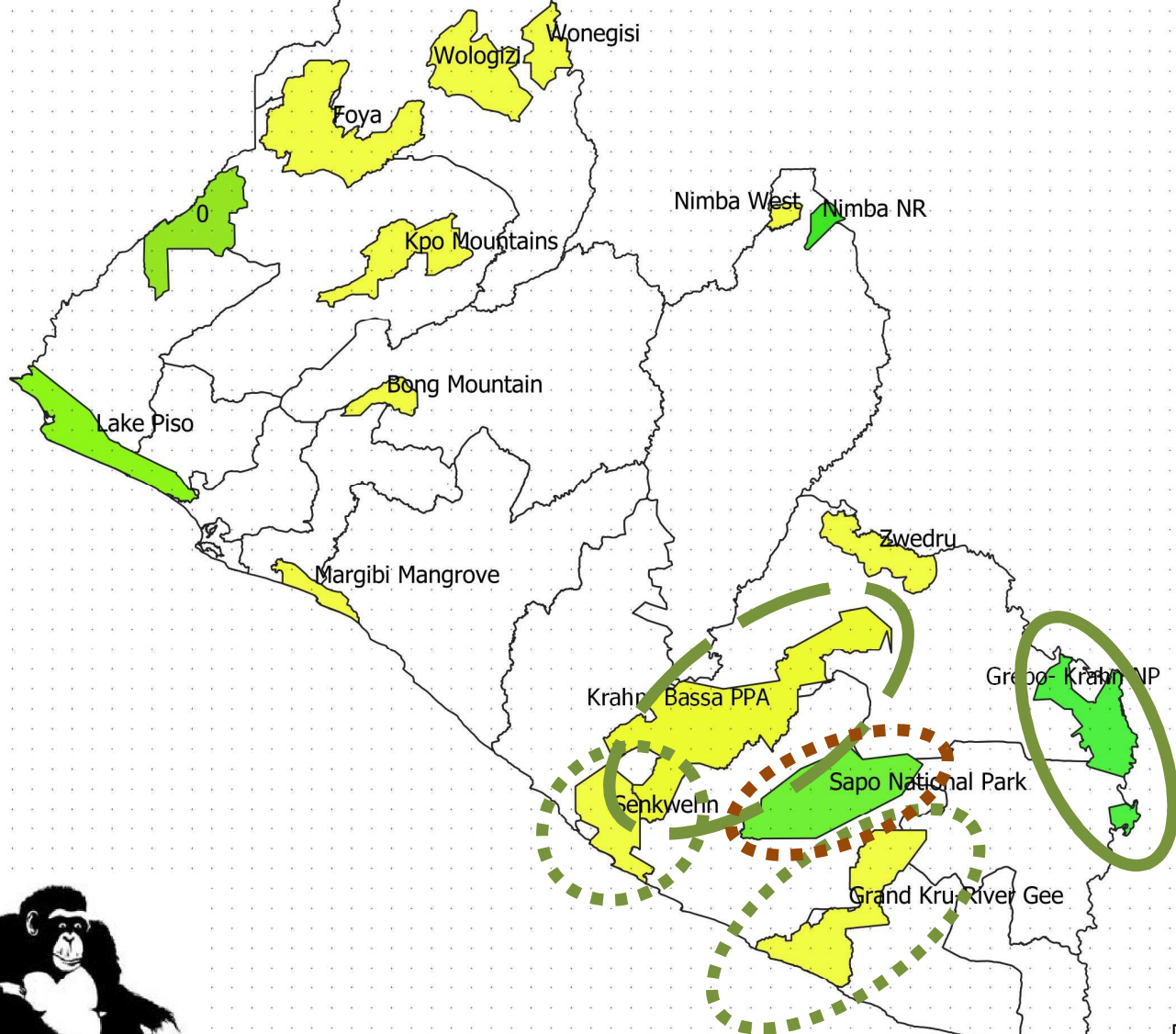
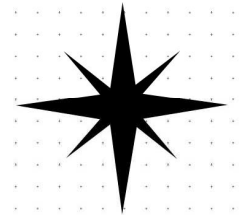
WCF Liberia



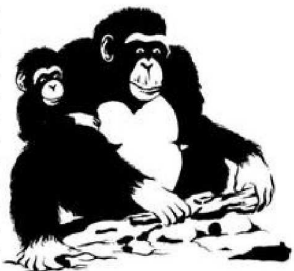
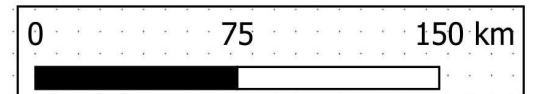
Zwedru team

WCF Liberia

Map showing Protected Areas and Proposed Protected Areas in Liberia



- Proposed Protected Areas
- KBPPA
- Lake_Piso_MUR
- East_Nimba_NR
- SNP
- Gola Forest NP
- Grebo-Krahn NP
- County boundary



WCF Liberia - Transboundary Law Enforcement Technical Committee



From 26. February until 7. March 2020, the WCF Ivorian team visited Liberia to develop the Action Plan.



WCF Liberia – Biomonitoring in Grebo-Krahn National Park

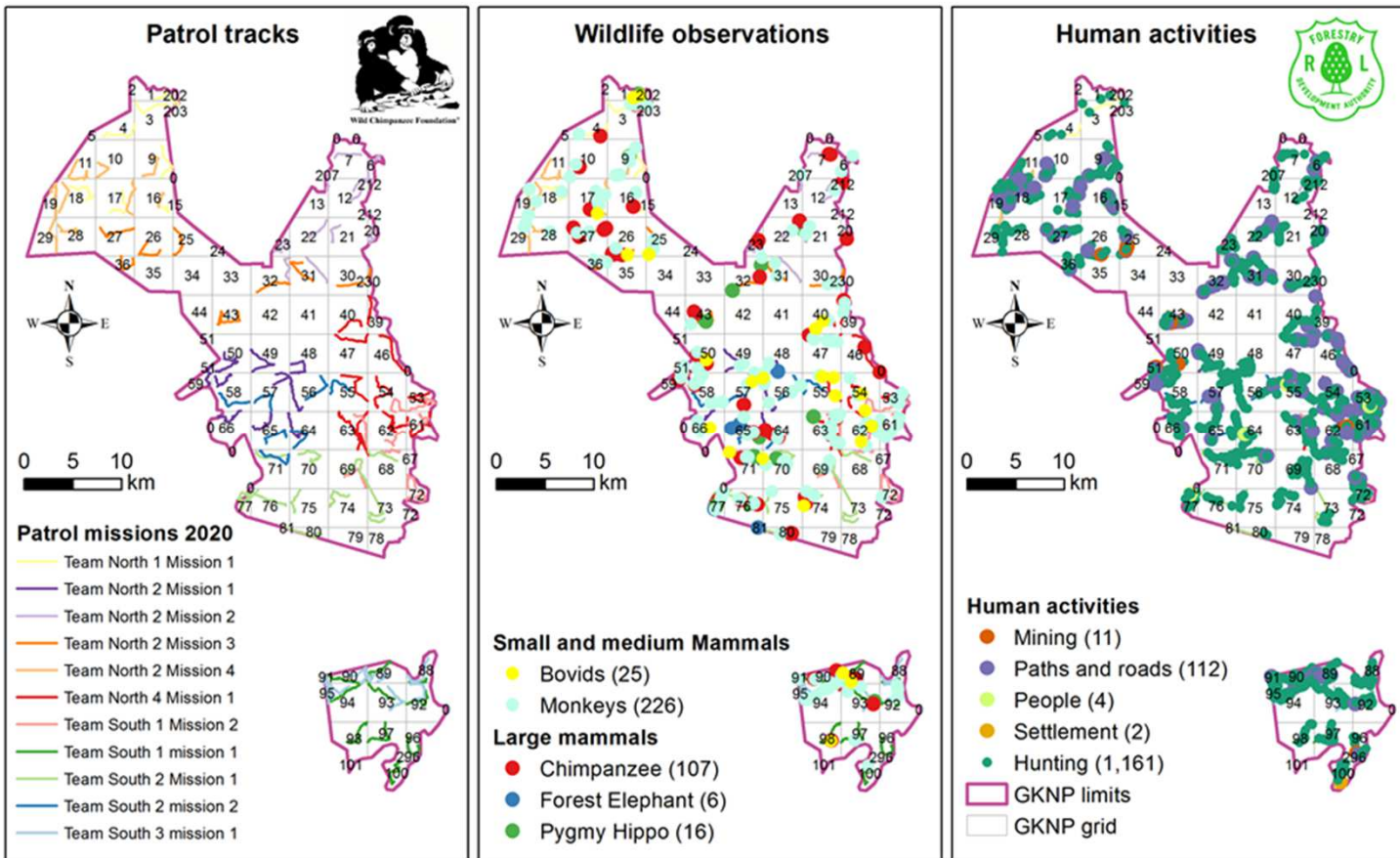
In December 2019, an intense biomonitoring program started at GKNP, using a **combination of line transect and camera trap surveys**.

During the first half of 2020, three biomonitoring teams, with support from seven community eco-guard teams, completed **224 line transects** (out of the planned 300) as well as **448 camera trap locations** (out of 500 planned).

All key species were recorded, such as the critically endangered western chimpanzees, endangered pygmy hippos, Jentink's duikers, vulnerable leopards and forest elephants.



WCF Liberia – Community eco-guard program in Grebo-Krahn and Proposed Krahn-Bassa National Park



Two of four newly established community eco-guard teams for Proposed Krahn-Bassa National Park.

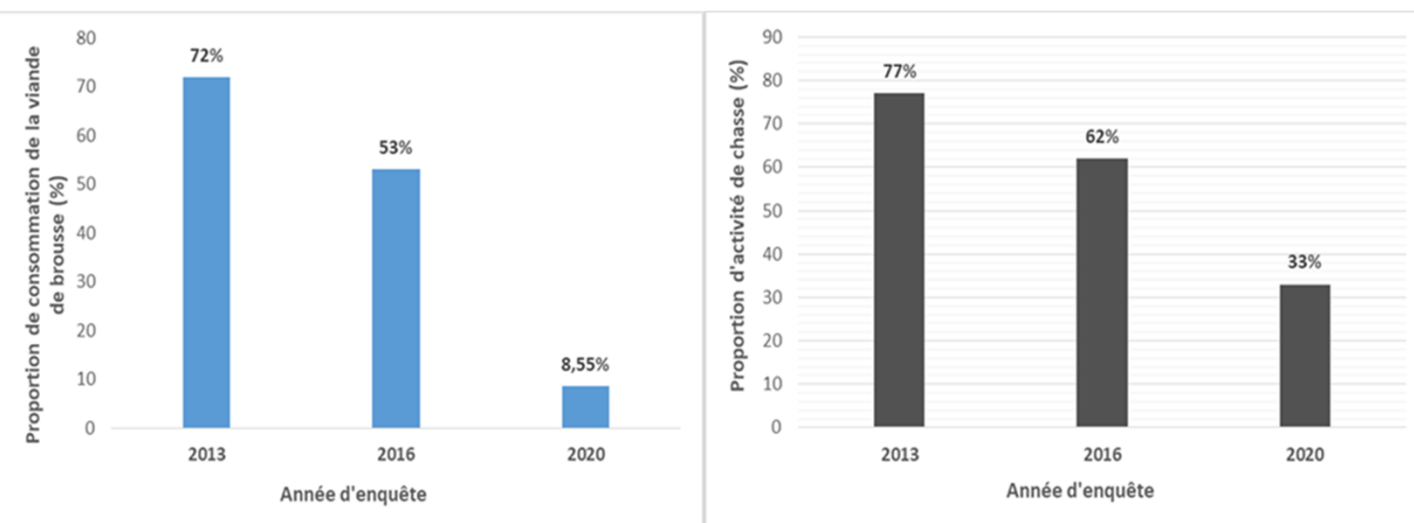


Results of community eco-guard patrols from January to June 2020. left: tracks of 11 missions performed in Grebo-Krahn National Park; middle: overview of mammal observations made during patrols; right: overview of illegal activities observed during patrols.

WCF Liberia – Socio-ecological survey around Grebo-Krahn National Park

Several socio-ecological studies were carried out around the Grebo-Krahn National Park between 2017 and 2020. In February and March 2020, a new data collection was carried out among 221 households in 22 villages around the park and focused on:

- (1) the socio-economic aspect;
- (2) the impact of the community development projects;
- (3) the perceptions of the bushmeat trade and the importance of the park's presence;
- (4) the impact of awareness-raising activities.



Proportion of bush-meat consumption (left) and hunting activity (right) in rural households around the Grebo-Krahn National Park



We found that the proportion of bushmeat consumed by households has fallen considerably compared to previous years and hunting has decreased over the last eight years (a drop of about 20% every three years).

WCF Liberia – Demarcation of the Grebo-Krahn National Park



In May/June 2020, WCF supported the **installation of 138 beacons** along the **boundary line of the park** in close collaboration with the **Liberian Forestry Development Authority (FDA)** and **local community members**.



WCF Liberia - Community Watch Teams in Sapo National Park

Since 2019, **WCF** has an office at the headquarters of Sapo National Park in Jallay's Town. One supervisor is permanently based there to ensure supervision and support for the community watch teams (100 persons).



In 2020, the community watch teams, together with FDA rangers, received 3 trainings, because next year we will transform them into community ecoguard teams for Sapo National Park.

WCF Liberia – Capacity Building

In July 2020, a training of women working on the bush-meat markets was conducted about the animal species that are legally protected in Liberia.



WCF Liberia - Sustainable alternative livelihoods - Fish-farming



Since 2016, we support **fish-farming** in the region of Grebo-Krahn National Park. In four communities, **23 fish-farmers** were trained and they maintain a total of **18 fish ponds**. In **2020**, a new pond in Drouglor was built and stocked with 1,200 Tilapia fingerlings from Peah.

In April 2020, fish harvests were organized in Sayuo and Peah. The total amount of fish harvested was **327 kg**, of which 167 kg were consumed by the fish-farmers and 160 kg were sold, creating an income equaling to ca. US\$ 100.



WCF Liberia - Sustainable alternative livelihoods - agriculture



Around Grebo-Krahn National Park we support forest friendly agriculture projects such as manioc and swamp rice farming. **100 woman of 10 villages** were trained and equiped with materials such as rice mills.



WCF Liberia - Sustainable alternative livelihoods – Beekeeping



WCF is working with the Universal Outreach Foundation (UOF) for the beekeeping projects. In 2020, **223 persons from 23 communities around Grebo-Krahn National Park** were doing beekeeping with us. During the first half of 2020, the beekeepers harvested **39.5 gallons of honey** and received US\$ 525.87 for the sale.

WCF Liberia – Awareness raising

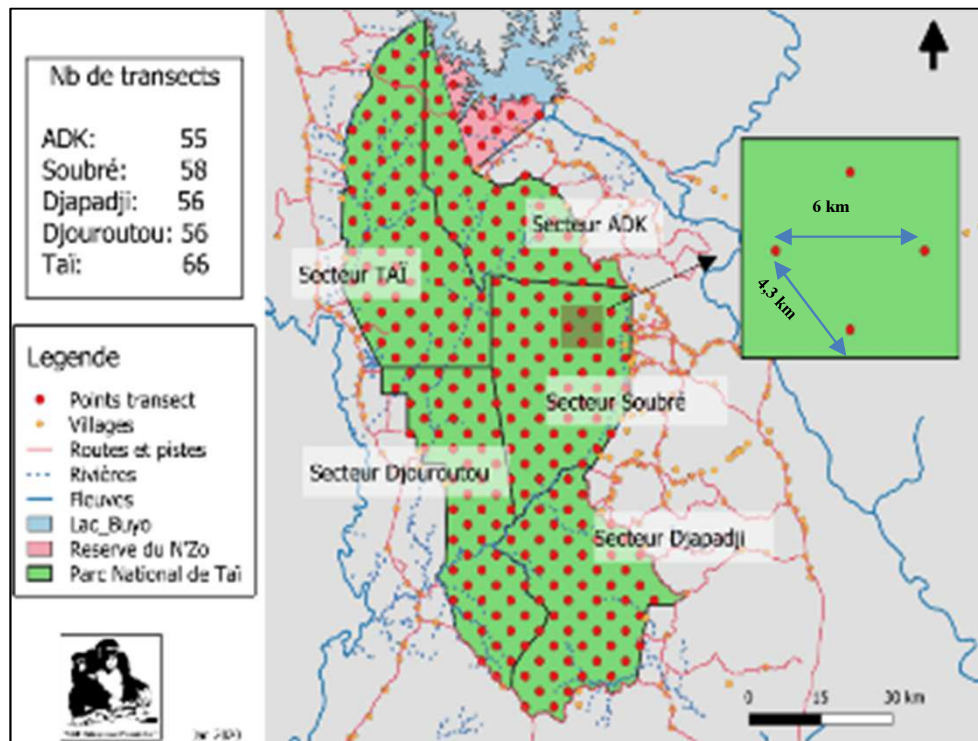
During the first half of 2020 the awareness raising activities concentrated on six radio programs, special events and specific COVID-19 responses. On 7 March 2020, selected community eco-guards participated in the celebration of World Wildlife Day in Zwedru. The third World Chimpanzee Day, on 14 July 2020, was celebrated with a march in Monrovia.



WCF Côte d'Ivoire



WCF Côte d'Ivoire – Camera trap monitoring in Taï National Park



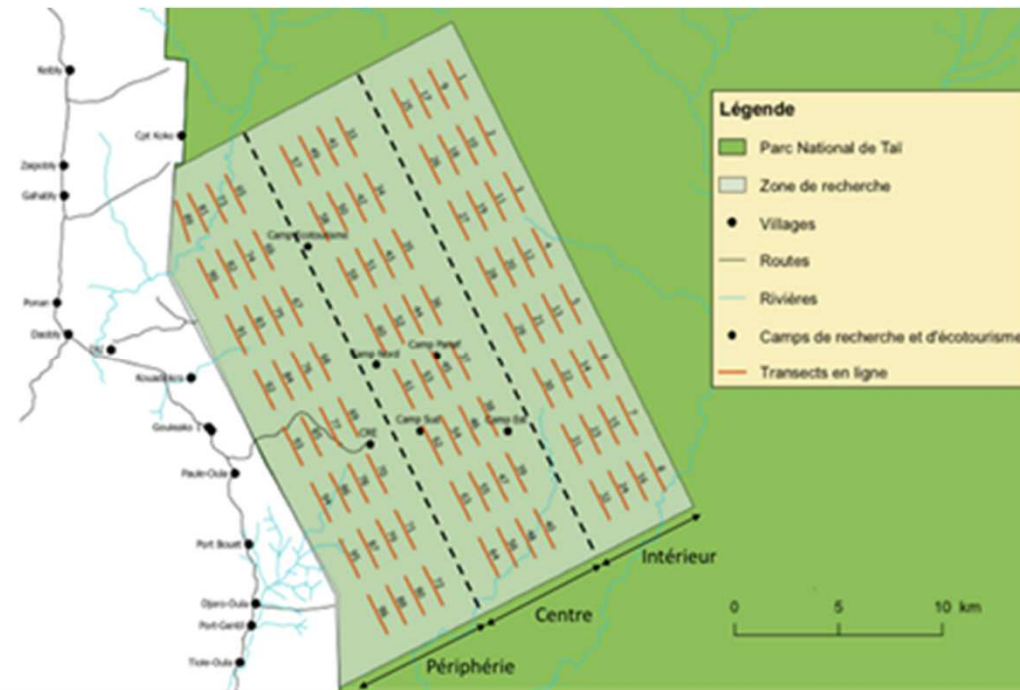
Sampling design of 291 point transects

200 camera traps have been installed in Taï National Park. The analysis of **74'828 videos** with animals identified **98 animal species**, including western chimpanzees, pygmy hippos and forest elephants.



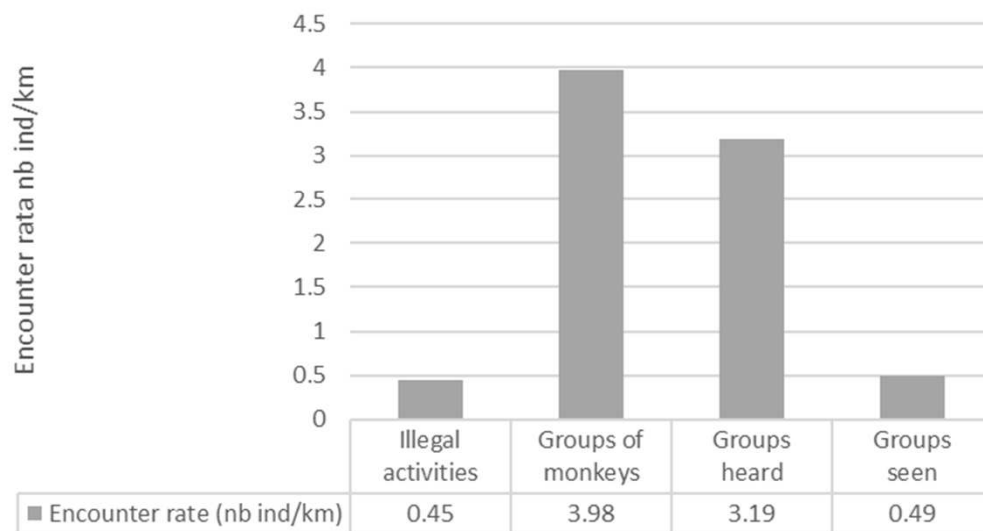
WCF Côte d'Ivoire – Anti-poaching project in Taï National Park

Since 2008, WCF conducts the **anti-poaching program in the eco-tourism and research zones of Taï National Park**. In 2020, the team finished 96 line transects once and detected 3.98 signs/km of monkeys, and 0.45 signs/km of illegal human activities.

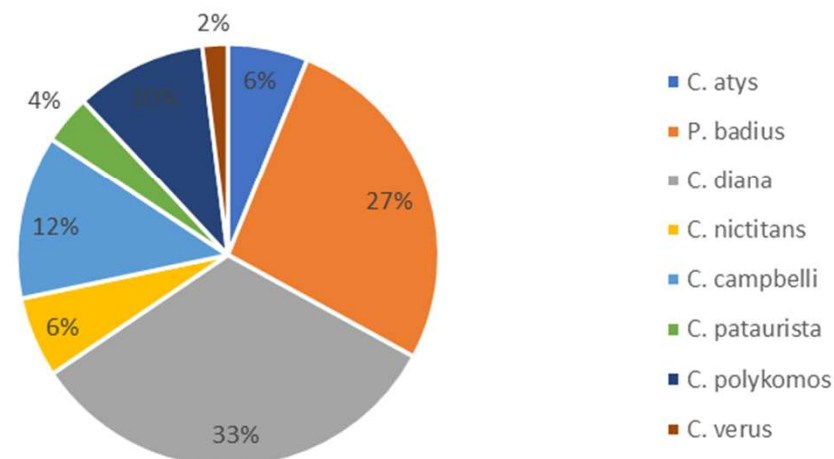


Sampling design of 96 lines transects

Encounter rate in 2020, round 1



Proportion of monkey's species seen and heard



WCF Côte d'Ivoire – Cavally Classified Forest

In 2020, **114 animal traps** placed by poachers and **862,67 ha** of illegal **cocoa plantations** have been destroyed during 5 patrols in the **Cavally Classified Forest**. The patrols are done by community eco-guards, WCF and SODEFOR agents.



WCF Côte d'Ivoire – Independent forest monitoring in Cavally Classified Forest

A documentary film on the independent forest monitoring in the Cavally Classified Forest, directed by ALMA PRODUCTION, in partnership with WCF and SODEFOR, was screened on 29 January 2020 at the French Institute of Côte d'Ivoire. This session gathered 275 participants and received a lot of media attention.



PROJECTION - DEBAT

La WILD CHIMPANZEE FOUNDATION et l'
AMBASSADE DE FRANCE EN COTE D'IVOIRE
sont heureux de vous présenter en avant-
première le documentaire

FORET EN VOIE D'EXTINCTION

L'espoir de l'observation indépendante

MERCREDI 29 JANVIER | 14H

► **Institut français de Côte d'Ivoire**

Suivi d'un débat à 15H, en présence d'acteurs institutionnels,
privés et représentants de la société civile

TIKEN JAH FAKOLY
Invité spécial

ALMA PRODUCTION **INSTITUT FRANÇAIS** Côte d'Ivoire  

WCF Côte d'Ivoire - Sustainable alternative livelihoods



© WILD CHIMPANZEE FOUNDATION

Makoré in all its forms.



In 2020, we supported **beekeeping** in Paulé-Oula, Djouroutou and Soubré, **chicken and pig farming** in Zagné, a **manioc project** in Tienkoula, a **potato project** in Keibly, **cacao and makoré butter project** in Taï and Gouleako. Tantie Troiti is refining the cacao and makoré butter to products they sell.

100% NATUREL



Tantie Troiti

RETROUVEZ LES PRODUITS TROITI DANS LES VILLAGES RIVERAINS DE LA FORÊT CLASSÉE DU CAVALLY ET DU PARC NATIONAL DE TAÏ (ZONE CLASSÉE RÉSERVE DE BIOSPHÈRE PAR L'UNESCO).

f Troiti

WCF Côte d'Ivoire – Environmental awareness



Due to COVID19, we had to close the **renovated eco-museum in Taï** in March 2020 and have recorded just 17 visitors.

The **sensibilisation meetings** in villages around the Taï National Park and Cavally Classified Forest continued and reached **3202 participants** during the first 6 months of 2020.



Month	Participants	Woman	Men	Children
January	448	56	392	0
February	1930	172	1581	177
March	199	16	141	42
April	269	25	244	0
May	137	5	132	0
June	219	47	172	0
Total	3202	321	2662	219

WCF Côte d'Ivoire - Sustainable alternative livelihoods – Eco-tourism



Habituation of chimpanzees for eco-tourism in Taï is ongoing.

The mangabey group is fully habituated and includes 58 individuals.

A red colobus group of ~ 40 individuals is also habituated.

In January and February 2020, **39 tourists** have visited the eco-tourism site in Taï, afterwards we closed the site because of the COVID19 crisis.





Thank you!

The WCF is grateful to all partners, conservation agencies and foundations supporting its conservation activities:



The WCF sincerely thanks the many private donors concerned by the vanishing wild chimpanzee populations for their generous donations towards its projects!